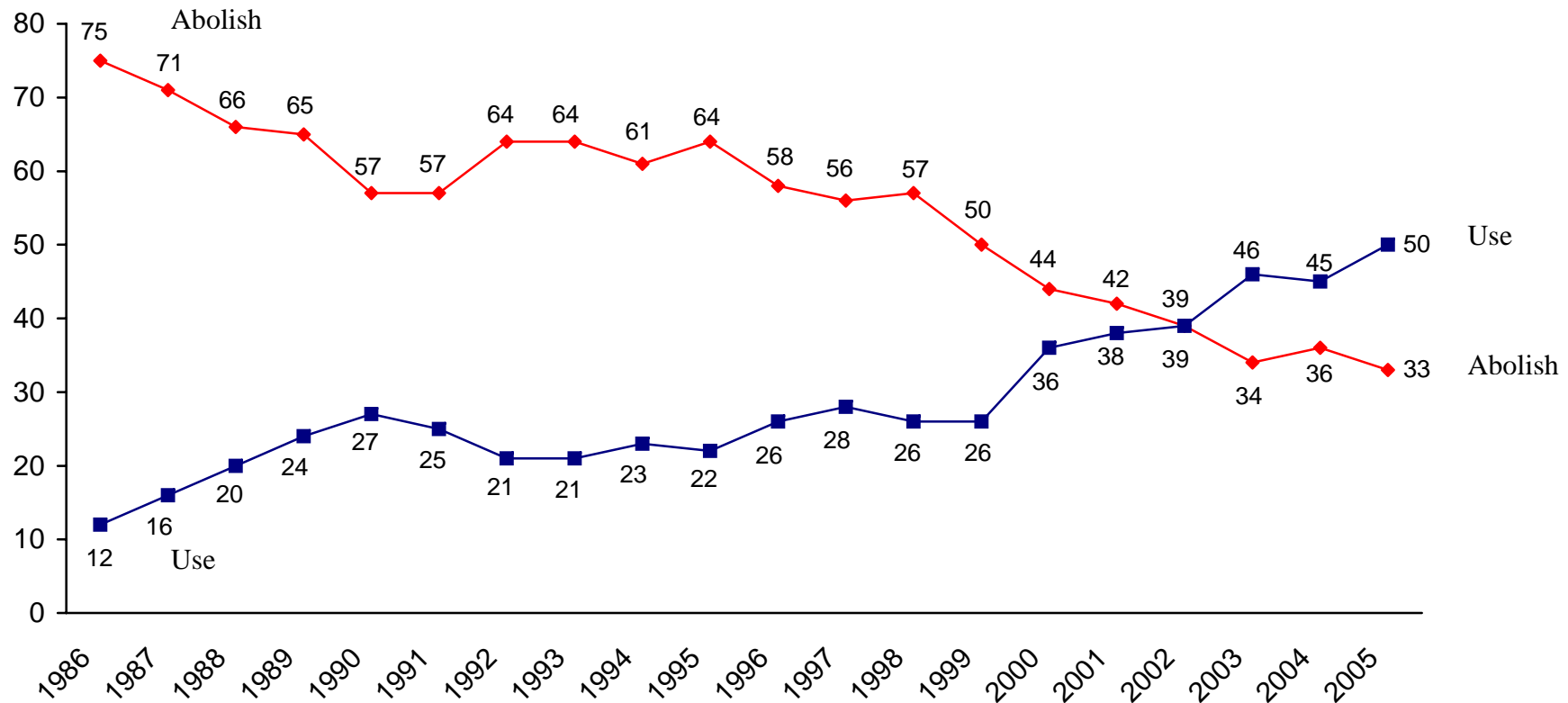


Sören Holmberg
Department of Political Science
Göteborg University
June 2006

**Swedish Public
Opinion
on
Nuclear Power**

SOM INSTITUTE
society opinion media

Swedes on the use of nuclear power as an energy source

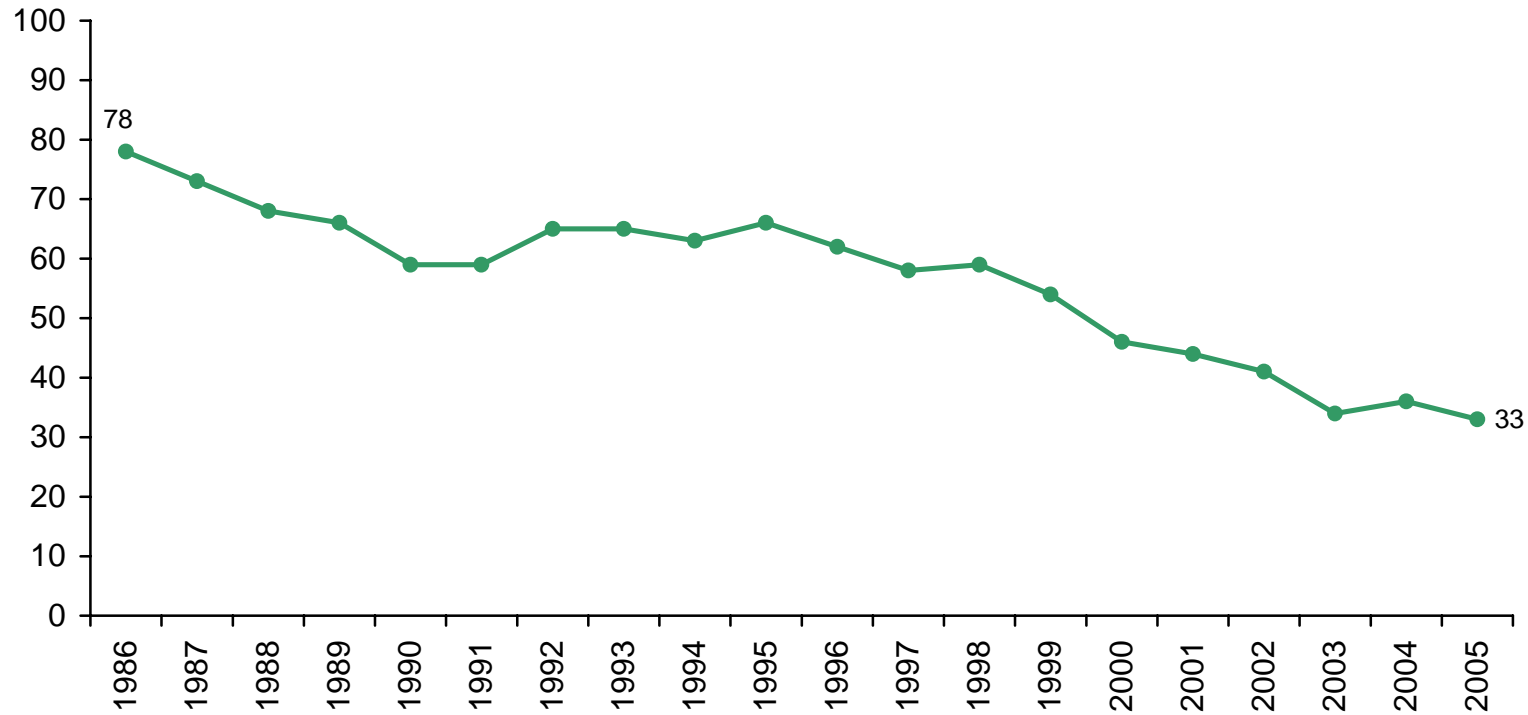


Data: SOM-Institute, Göteborg University; Annual nationwide surveys in Sweden; Sample size 3000 persons 15-85 years old; Mail questionnaires with an average response rate of 65 percent. *Question:* What is your view on the long term use of nuclear power as an energy source in Sweden?" Five response alternatives: "abolish nuclear power by 2010 at the latest; abolish nuclear power, but not until our present reactors have done their job; use nuclear power and renew the reactors when they are worn out; use nuclear power and build additional reactors in the future; no definite opinion." In 1986, the don't know response was missing.

Comment: All respondents are included in the percent calculations.

Principal investigator: Sören Holmberg, phone +4631 7731227, e-mail: soren.holmberg@pol.gu.se. All data processed by Rudolf Antoni.

Percent Swedes in favor of abolishing nuclear power



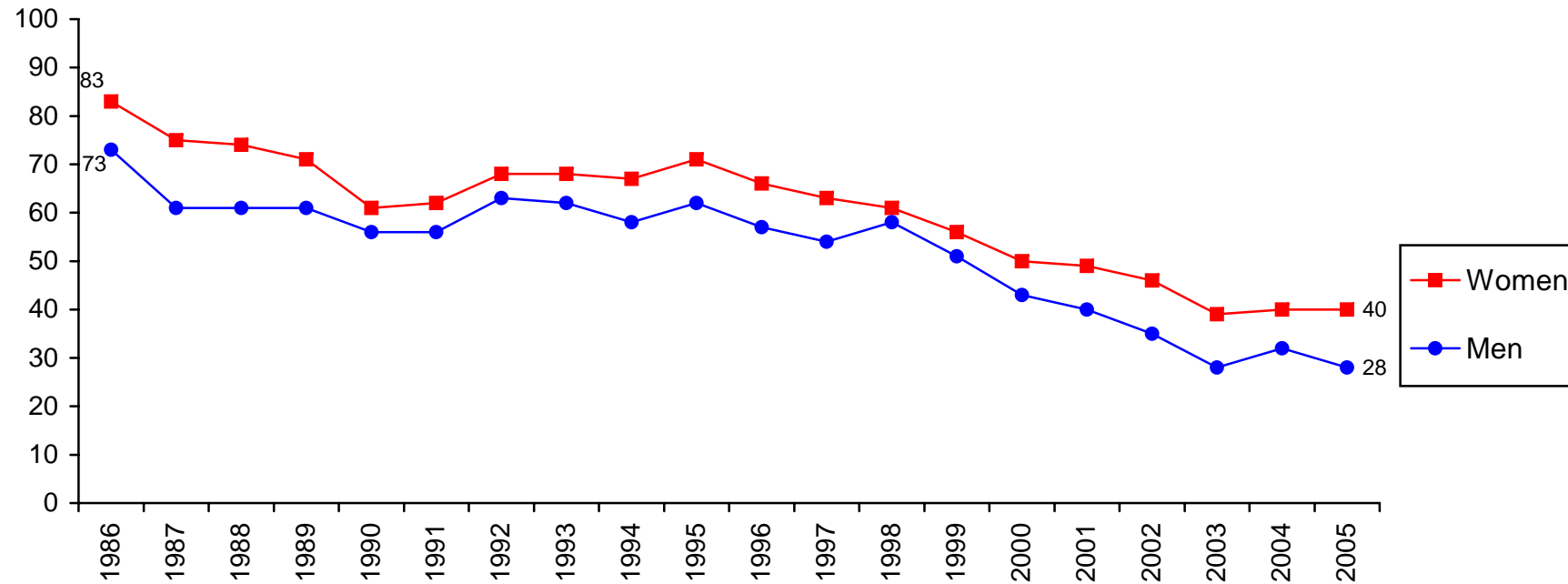
Data: SOM-Institute, Göteborg University; Annual nationwide surveys in Sweden.

Comment: All respondents are included in the percent calculations.

Principal investigator: Sören Holmberg, phone +4631 7731227, e-mail: soren.holmberg@pol.gu.se.

All data processed by Rudolf Antoni.

Percent in favor of abolishing nuclear power among Swedish women and men



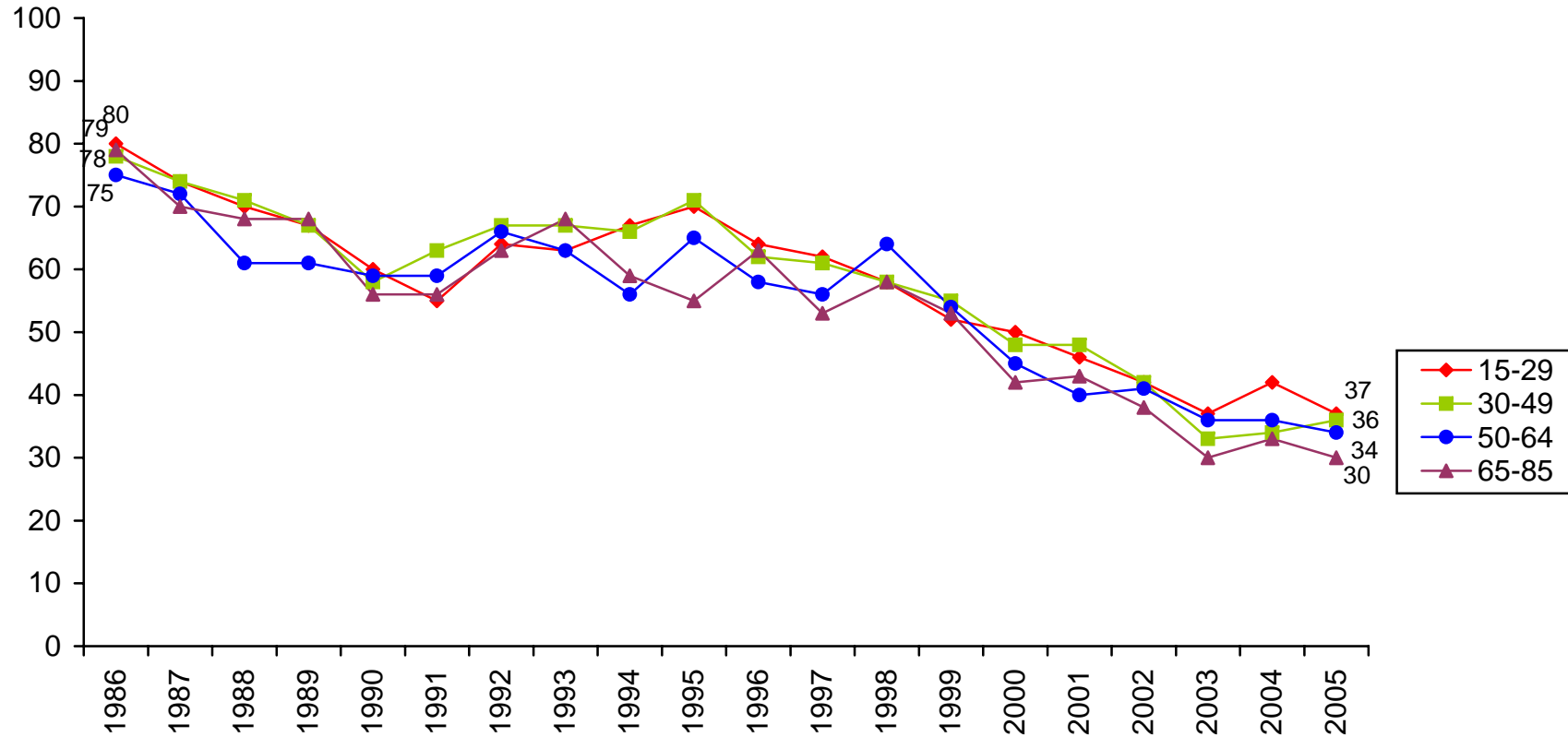
Data: SOM-Institute, Göteborg University; Annual nationwide surveys in Sweden.

Comment: All respondents are included in the percent calculations.

Principal investigator: Sören Holmberg, phone +4631 7731227, e-mail: soren.holmberg@pol.gu.se.

All data processed by Rudolf Antoni.

Percent in favor of abolishing nuclear power among Swedes in different age groups



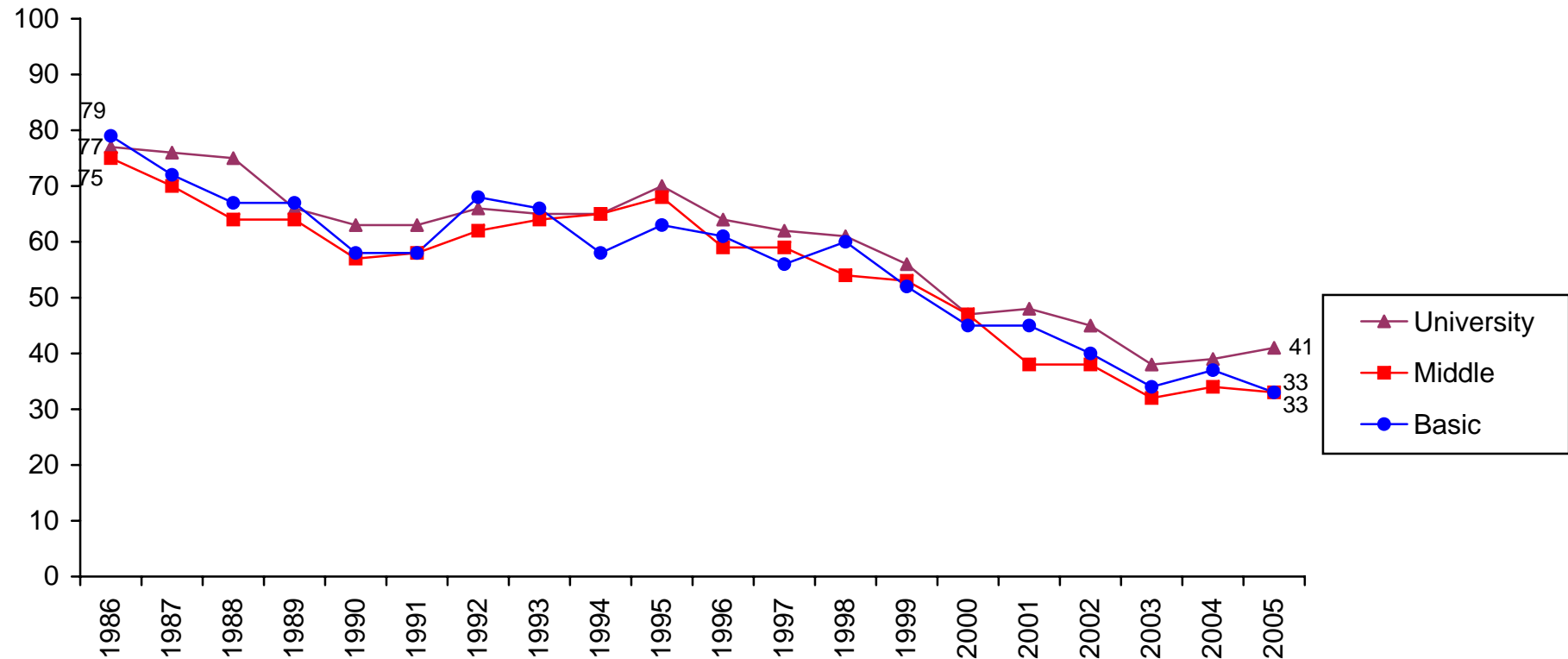
Data: SOM-Institute, Göteborg University; Annual nationwide surveys in Sweden.

Comment: All respondents are included in the percent calculations.

Principal investigator: Sören Holmberg, phone +4631 7731227, e-mail: soren.holmberg@pol.gu.se.

All data processed by Rudolf Antoni.

Percent in favor of abolishing nuclear power among Swedes in different educational groups



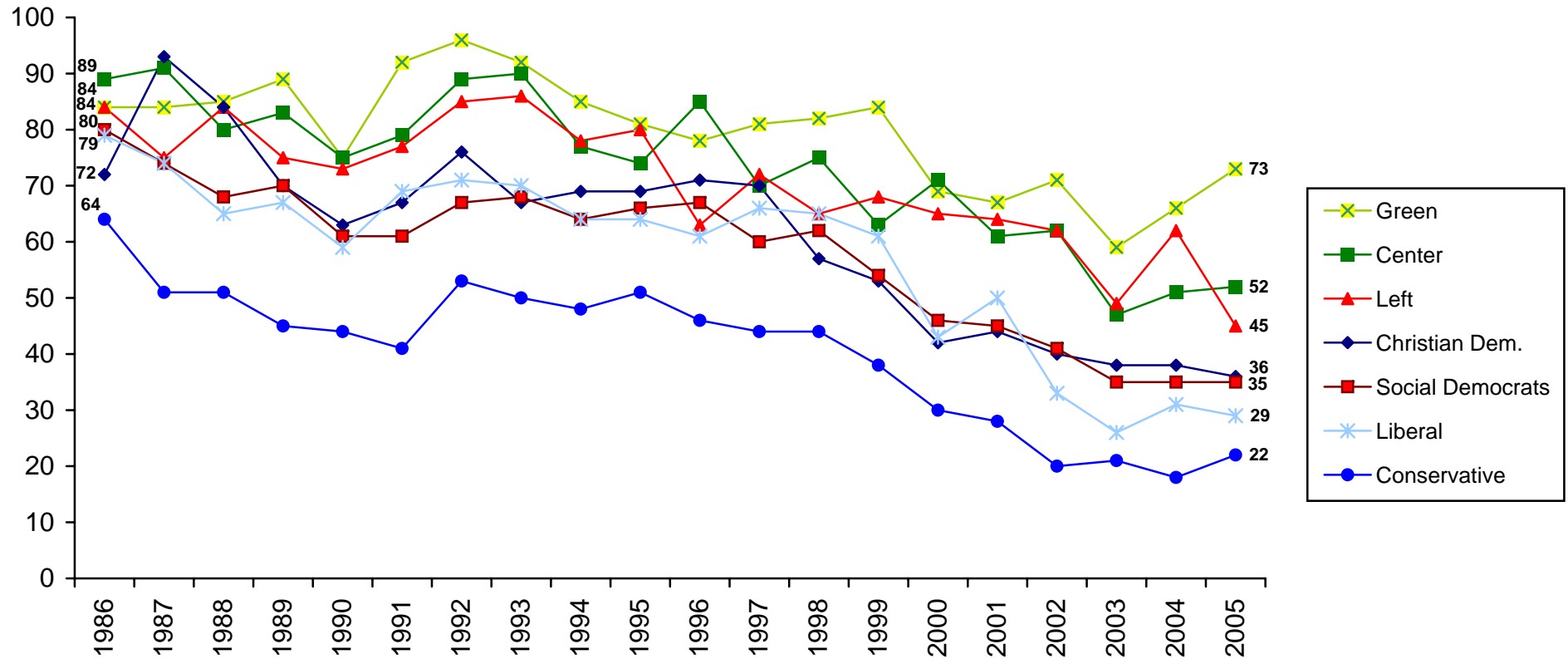
Data: SOM-Institute, Göteborg University; Annual nationwide surveys in Sweden.

Comment: All respondents are included in the percent calculations.

Principal investigator: Sören Holmberg, phone +4631 7731227, e-mail: soren.holmberg@pol.gu.se.

All data processed by Rudolf Antoni.

Percent in favor of abolishing nuclear power among Swedes with different party sympathies



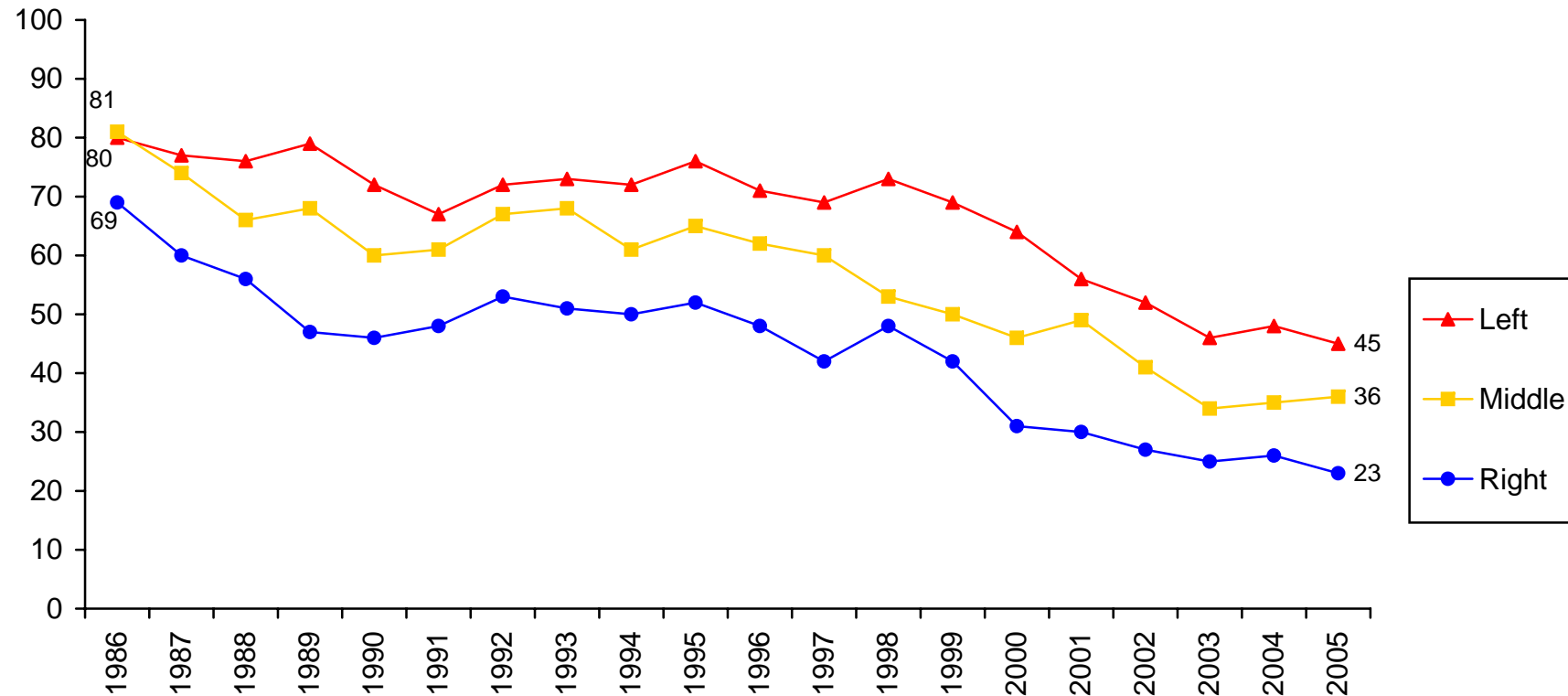
Data: SOM-Institute, Göteborg University; Annual nationwide surveys in Sweden.

Comment: All respondents are included in the percent calculations.

Principal investigator: Sören Holmberg, phone +4631 7731227, e-mail: soren.holmberg@pol.gu.se.

All data processed by Rudolf Antoni.

Percent in favor of abolishing nuclear power among Swedes with different ideological self-placements



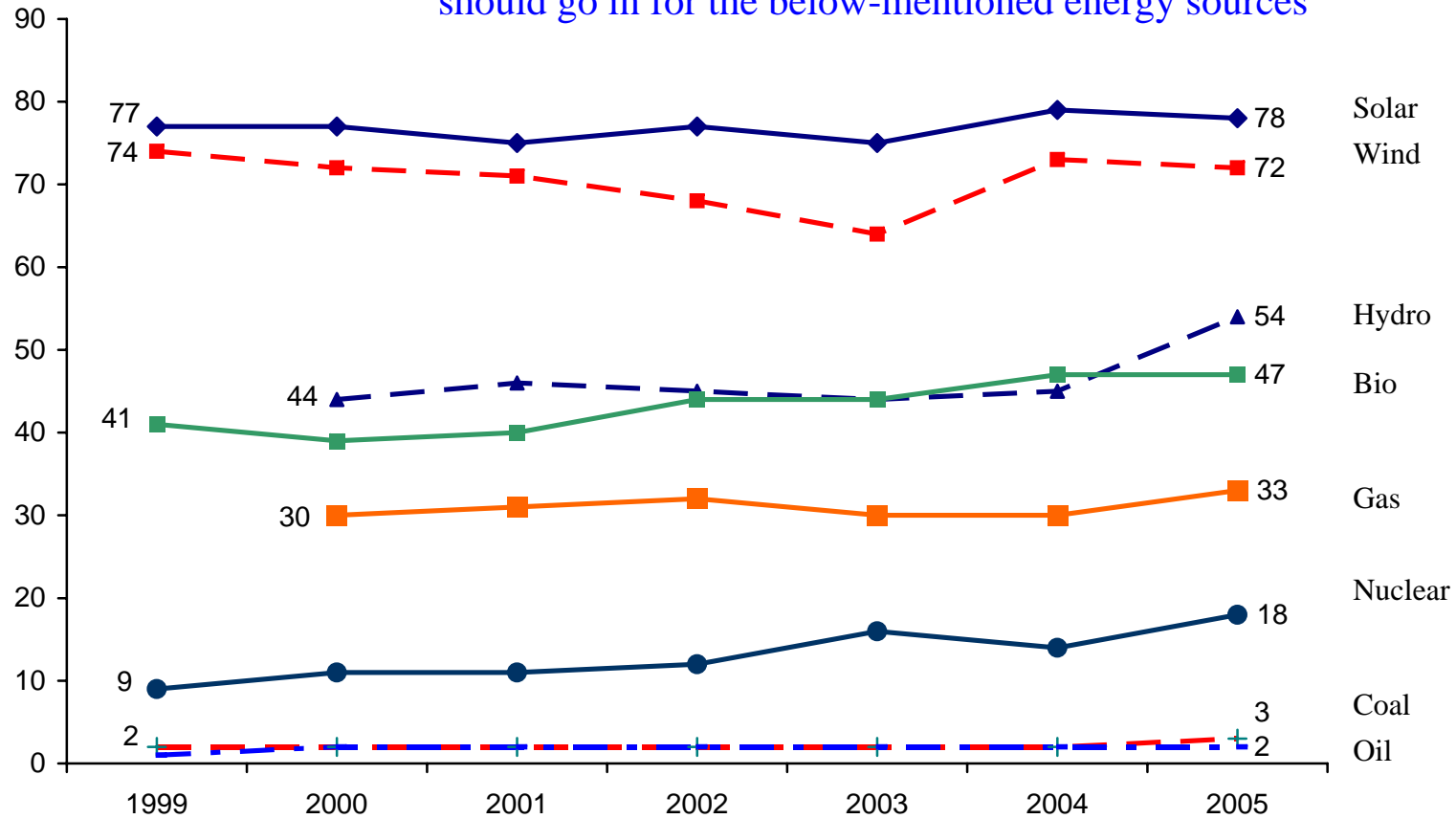
Data: SOM-Institute, Göteborg University; Annual nationwide surveys in Sweden.

Comment: All respondents are included in the percent calculations.

Principal investigator: Sören Holmberg, phone +4631 7731227, e-mail: soren.holmberg@pol.gu.se.

All data processed by Rudolf Antoni.

Percent Swedes who think Sweden - more than today - should go in for the below-mentioned energy sources



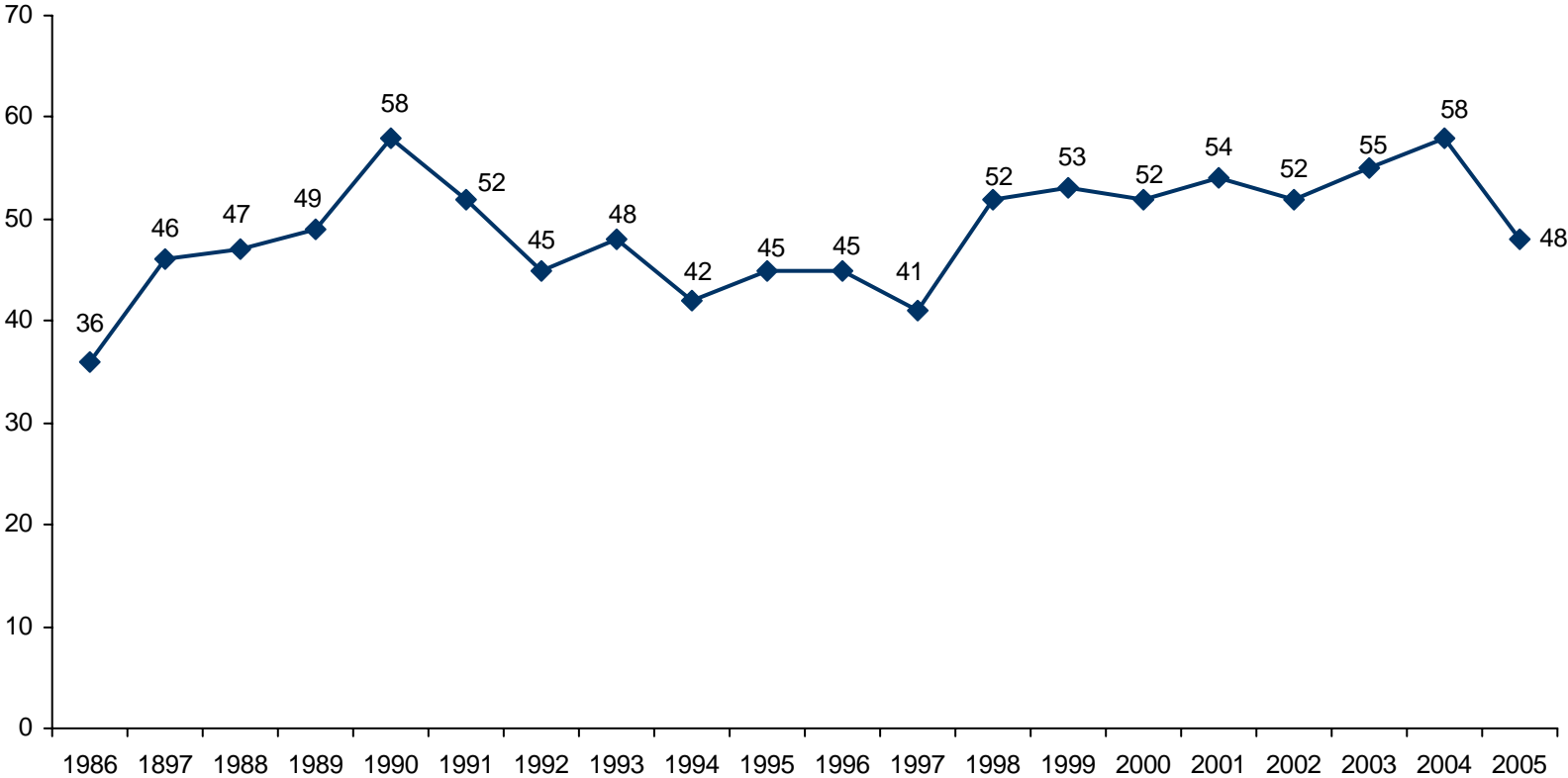
Data: SOM-Institute, Göteborg University; Annual nationwide survey in Sweden.

Comment: All respondents are included in the percent calculations.

Principal investigator: Sören Holmberg, phone +4631 7731227, e-mail: soren.holmberg@pol.gu.se.

All data processed by Rudolf Antoni.

Swedish Trust in the Nuclear Power Industry



Data: SOM-Institute, Göteborg University; Annual nationwide surveys in Sweden.

Question: "To what extent do you trust information about energy and nuclear power provided by the following groups?" Four response alternatives: "very much; fairly much; fairly little; very little". The results show percent people answering very or fairly much when asked about the Nuclear Power Industry. The percentage base is defined as persons who answered the question.

Principal investigator: Sören Holmberg, phone +4631 7731227, e-mail: soren.holmberg@pol.gu.se. All data processed by Rudolf Antoni.