



UNIVERSITY OF GOTHENBURG
SCHOOL OF BUSINESS, ECONOMICS AND LAW

WORKING PAPERS IN ECONOMICS

No 497

**The Willingness to Pay-Willingness to Accept Gap Revisited:
The Role of Emotions and Moral Satisfaction**

Anders Biel, Olof Johansson-Stenman and Andreas Nilsson

April 2011

ISSN 1403-2473 (print)
ISSN 1403-2465 (online)

The Willingness to Pay-Willingness to Accept Gap Revisited: The Role of Emotions and Moral Satisfaction

Anders Biel¹, Olof Johansson-Stenman², Andreas Nilsson¹

Abstract. While many earlier studies have found that people's maximum willingness to pay for having a good is often substantially lower than their minimum willingness to accept *not* having it, more recent experimental evidence suggests that this discrepancy vanishes for standard consumption goods when an incentive-compatible design without misconceptions is used. This paper hypothesises that there is nevertheless a discrepancy for goods with a perceived moral character, such as contributions to a good cause, and moreover that the reason for this discrepancy can largely be explained by differences in emotions and moral perceptions. The results from a real-money dichotomous-choice experiment, combined with measurements of emotions and morality, are consistent with these hypotheses.

JEL: C91; H41

Keywords: Willingness to pay-Willingness to accept gap, Endowment effect, Emotions, Ethics, Experiments.

¹Department of Psychology, University of Gothenburg, Box 640, SE 405 30 Gothenburg, Sweden.

²Corresponding author, Department of Economics, School of Business, Economics and Law, University of Gothenburg, Box 640, SE 405 30 Gothenburg, Sweden.

E-mail: Olof.Johansson@economics.gu.se. Phone: +46 31 7862538. Fax: +46 31 7861043.

1. Introduction

The large disparity often observed between people's maximum willingness to pay for a good (WTP) and their minimum willingness to accept not having it (WTA) continues to be puzzling; see e.g. Bateman et al. (2005) and Plott and Zeiler (2005, 2007) for careful experimental contributions that aim to identify why and when such disparities exist, and Huck, Kirchsteiger and Oechssler (2005) for possible evolutionary arguments behind them. The present paper uses experimental evidence combined with measurements of emotions and morality to shed light on this disparity.

Conventional microeconomic theory implies that an individual is *on the margin* willing to pay just as much for obtaining a good as he or she is willing to accept forsaking it. At the same time it predicts that WTA typically exceeds WTP for discrete (i.e. non-marginal) changes. Of course, survey-based and experimental empirical tests are generally based on discrete changes, and typically finds that WTA exceeds WTP, often by a substantial margin (Horowitz and McConnell, 2002). Whether the observed discrepancies can be explained within this framework is debated, however. Randall and Stoll (1980) derived bounds that seem to indicate that the WTA-WTP difference, based on standard theory, should generally be quite small. However, Hanemann (1991) derived other conditions that highlight the degree of complementarity between income and the good to be valued. He argued that observed large WTA-WTP discrepancies are consistent with standard theory, given low complementarity between the good and income. Indeed, he showed that when the elasticity of substitution between them goes to zero, the WTA-WTP discrepancy becomes infinite. Amiran and Hagen (2003) provided an important generalisation and showed, both algebraically and graphically, that an infinite WTA-WTP discrepancy may occur even when the elasticity of substitution is

not zero, provided that the utility function is asymptotically bounded;¹ cf. also Shogren et al. (1994). Sugden (1999), Horowitz and McConnell (2003) and Horowitz, List and McConnell (2007), on the other hand, argued that the Hanemann argument is not sufficient to explain observed results from contingent valuation (CV) studies, and hence that one must move beyond mainstream theory to understand the data. At present, there is no sign of an approaching consensus on this issue.

Several explanations have been suggested beyond the standard microeconomic theory, the most prominent being loss aversion (Kahneman and Tversky, 1979; Tversky and Kahneman, 1991), i.e. that losses (reflected by WTA) tend to loom larger than gains (reflected by WTP); see e.g. Kahneman, Knetsch and Thaler (1990) and Knetsch (1989, 2000). However, loss aversion *per se* cannot explain the observed regularity that the WTA-WTP disparity tends to be much larger for public goods, such as environmental goods; see the recent meta-analyses by Horowitz and McConnel (2002) and Sayman and Öncüler (2005). Horowitz and McConnel summarised that 'the farther a good is from being an "ordinary private good", the higher the ratio' (p. 442). Moreover, Plott and Zeiler (2005) found in a recent experimental study that the discrepancy vanishes for standard consumption goods when an incentive-compatible design that controls for misconceptions is used.

A possible explanation for this pattern is that public good choices are perceived to have a more obvious ethical dimension, since the individual choices also affect (or are perceived to

¹ Whereas *non-bounded* utility functions such as Cobb-Douglas have indifference curves that are asymptotic to the good axis, *bounded* utility functions such as the ones used by Amiran and Hagen have indifference curves with asymptotes at a positive level of the good to be valued (see their Figure 1B). The latter case implies that universal hyper-substitutability does not apply, i.e. one cannot at all levels of a particular good fully compensate an individual for a certain reduction of the good by an increase in another good (such as money). In a more recent paper (Amiran and Hagen, 2010), the authors extend the analysis of such bounded utility functions to another phenomenon often observed in the CV literature, the limited sensitivity to scope. Specifically, they show that one cannot, based on standard consumer theory, rule out arbitrarily small degrees of sensitivity to scope for this class of utility functions.

affect) others (Johansson-Stenman and Svedsäter, 2008). Kahneman and Knetsch (1992) suggested that the numbers reported in survey-based hypothetical WTP studies may not primarily express respondents' values of goods, but rather the 'moral satisfaction' of behaving in an ethically admirable way, which corresponds to the so-called 'warm glow' hypothesis (Andreoni, 1989, 1990).² Others have suggested that the influence of a moral perspective may be particularly strong under WTA (Boyce et al., 1992; Irwin, 1994; Nyborg, 2000; Sayman and Öncüler, 2005). This parallels the distinction between omission and commission, since refraining from contributing is an act of omission while accepting payment is an act of commission. Empirical evidence suggests that acts of omission causing harm are typically perceived as less blameworthy than acts of commission that cause an equal amount of harm (Baron and Ritov, 1994; Spranka, Minsk and Baron, 1991).³

If it is correct that the perceived morality, or the moral satisfaction, differs between WTA and WTP settings for goods with a perceived moral character, it appears logical that the associated emotional reactions differ as well. According to Jonathan Cohen (2005, 3), a leading brain researcher: 'Emotions influence our decisions. They do so in just about every walk of our lives, whether we are aware of it and whether we acknowledge it or not.' However, although already Adam Smith discussed the role of emotions extensively, in particular in his *Theory of Moral Sentiments* (Evensky, 2005; Ashraf, Camerer and Loewenstein, 2005), economics has traditionally had little to say about them, especially empirically. According to Bosman et al. (2005, 408), 'There is hardly any empirical economic

² However, the warm glow hypothesis is far from uncontroversial, in particular when a referendum format is used. According to Hanemann (1994, p. 33): "'Warm glow' is simply a red herring. I have seen no evidence that people get a warm glow from voting to raise their own taxes, whether in real life or in a contingent valuation study.'

³ This also relates to the typically observed non-symmetric effects between carrots and sticks, e.g. in order to induce cooperation between people; c f. for example Sutter et al. (2010).

research among emotions.’ However, this is about to change.⁴ This is partly due to increasing influences from psychology and partly as a result of the insights from the emerging field of neuroeconomics (see e.g. Camerer et al., 2005; Fehr, Fischbacher and Kosfeld, 2005; Singer and Fehr, 2005).

As an example of the latter, consider the so-called ‘trolley problems’, about which there is a long-established discussion in philosophy (see e.g. Appiah, 2008): In one scenario, a runaway trolley is hurtling down the tracks and is about to run over and kill five people who are unavoidably in its path. The five people can only be saved by hitting a switch that steers the trolley onto a side track where it will kill one person. Should the switch be hit? When polled, a large majority think it should, and most philosophers agree. In a second scenario, the trolley is again hurtling toward the five people. This time, the only way they can be saved is by pushing a nearby 300 pound man, standing on a footbridge over the tracks, off the bridge and down on the tracks. His body mass will stop the trolley, but he will be killed in the process. Should the man be pushed? Most people, including many philosophers, say no. While there is a great deal of philosophical literature trying to justify why it is morally acceptable to sacrifice one life to save five in one scenario but not in the other, psychologist Joshua Greene and coauthors (Greene et al., 2001) studied the problem from a purely descriptive point of view. They provided evidence based on functional magnetic resonance imaging (fMRI), suggesting that the different reactions in the two scenarios can largely be explained by different emotional reactions rather than by differences in cognitive reasoning.

Moreover, psychologists Peters, Slovic and Gregory (2003) suggested that the WTA-WTP disparity could be accounted for by different emotional reactions. In a recent CV study of an ordinary market good (lottery tickets), they found that the disparity between the WTA and the WTP conditions was largest for the tickets that evoked the strongest emotions.

⁴ See e.g. Hopfensitz and Reuben (2009) for a recent study on the role of emotions such as guilt for the effectiveness of punishment in order to deter uncooperative actions.

Although earlier research has thus proposed moral reactions as a possible explanation for the WTA-WTP disparity for goods with a perceived moral character, to the best of our knowledge no study has tested this assumption.

In the present paper we therefore set up a simple and clean real-money dichotomous-choice experiment where the monetary outcomes are exactly the same in the WTA and WTP framings. This is done by adjusting the initial income and the level of a provided good (money given to a WWF project) in the WTA framing. Each subject can choose an alternative where the overall effect is that he/she receives 150 SEK (approximately 20 US dollars) or an alternative where he/she receives 50 SEK and where 100 SEK is donated to a WWF project. If a difference remains, we can unambiguously conclude that the observed behaviour is not consistent with standard theory. In fact, this turns out to be the case. The perceived emotional and moral reactions associated with each choice are then measured for each framing. As hypothesised, not donating to the WWF project causes stronger negative emotions, such as shame, in the WTA condition compared to in the WTP condition. Moreover, when correcting for emotional reactions, no statistically significant effect of the framing remains.

The remainder of the paper is organised as follows: Section 2 first outlines the standard model as well as a modified model that suggests asymmetric emotional reactions in the WTA and WTP treatments, and then goes on to present testable hypotheses. Section 3 provides the experimental set-up followed by the corresponding results in Section 4, and Section 5 concludes the paper.

2. The Model and Hypotheses

2.1. The Conventional Model

Consider an individual who is faced with a simultaneous increase in a provided good with a perceived moral character, G (which may or may not have a public good character), and a

decrease in his/her own income y . Provided that the individual's behaviour is defined by the maximisation of a strictly quasi-concave and twice continuously differentiable utility function $U = u(y, G)$, the WTP for an increase in G by ΔG , starting from $\{y^0, G^0\}$, is implicitly given by B , such that

$$u(y^0, G^0) = u(y^0 - B, G^0 + \Delta G), \quad (1)$$

which is also illustrated in Figure 1. Similarly, the WTA for a decrease in G by the amount ΔG , starting from $\{y^0 - B, G^0 + \Delta G\}$, is of course also given by B . Indeed, according to conventional theory we should clearly rank the allocations $\{y^0, G^0\}$ and $\{y^0 - B, G^0 + \Delta G\}$ in the same way whether we start in allocation $\{y^0, G^0\}$ and calculate the associated WTP or start in allocation $\{y^0 - B, G^0 + \Delta G\}$ and calculate the associated WTA. Since this is true for each individual, the fraction of people in a population who prefer the allocation $\{y^0 - B, G^0 + \Delta G\}$ over $\{y^0, G^0\}$ should then clearly be the same whether expressed based on a WTA or a WTP framing. This is the theoretical basis for our experiment, which we present in the next section.

<<Figure 1 about here>>

Note that we will compare only two different allocations, and that these allocations are the same for the WTP and the WTA framings. This of course means that we do not aim to quantify the discrepancy between WTA and WTP, neither for an individual nor in terms of some average for our sample. Indeed, since we do not know each individual subject's WTP beforehand, we cannot make the appropriate initial monetary adjustments. Suppose that we guessed, incorrectly, that an individual would be willing to pay only A for the G improvement, starting from $\{y^0, G^0\}$. If we then asked the individual about his/her minimum WTA in order to accept a decrease in G by ΔG , starting from $\{y^0 - A, G^0 + \Delta G\}$, this WTA would of course in general not equal B . Indeed, from the indifference curve U' in Figure 1 we obtain a WTA equal to $A + D$, which in Figure 1 is considerably larger than B . Yet,

depending on how the indifference curve U' is drawn, all WTA values above A are possible (while maintaining quasi-concavity and monotonicity). Similarly, if the initial income compensation in the WTA treatment is C where $C > B$, we instead end up on the lower indifference curve U'' . Then we can again not say whether the WTA associated with a G decrease from $G^0 + \Delta G$ to G^0 , starting from $\{y^0 - C, G^0 + \Delta G\}$, is smaller or larger than B , but only that it is smaller than C .

However, again, we are not concerned with measuring the size of the WTA-WTP discrepancies, but with testing whether the two allocations are ranked differently depending on whether they are presented based on a WTP or a WTA context.⁵

2.2. The Extended Model

Consider now an alternative model with an asymmetry between the WTA and WTP framings *per se*, i.e. in addition to possible differences due to conventional income and substitution effects. Assume that people derive utility from their experienced emotional state, E , which is assumed to arise from the actions in the moral sphere, in addition to their utility derived from y and G , as follows:

$$U = v(y, G) + E, \quad (2)$$

where v is strictly quasi-concave and twice continuously differentiable, and one may interpret the emotional state E as a reflection of conscience.⁶ If the individual contributes to an increased G , then the emotional state improves such that:

$$E = E^0 + \alpha f(\Delta G), \quad (3)$$

⁵ Note again that, according to conventional theory, this ranking should be the same regardless of whether WTA exceeds WTP without any initial income compensation in the WTA treatment, or for any other income compensation than the one corresponding to the WTP based on the initial allocation.

⁶ See e.g. Brekke et al. (2003) and Nyborg and Brekke (2010) for other models of moral motivation.

where $\alpha > 0$ and $f'(\Delta G) > 0$. If, on the other hand, the individual contributes to a decreased G , then the emotional state deteriorates as follows:

$$E = E^0 - \beta f(\Delta G), \quad (4)$$

where $\beta > \alpha > 0$. Thus, there is an asymmetry such that the emotional improvement of causing an increased G is smaller than the emotional loss of causing an equally large decrease in G .

Consider now again the point of departure $\{y^0, G^0\}$ together with the WTP question of how much the individual would pay for a ΔG increase in G . Denoting this amount CV , we have:

$$v(y^0, G^0) + E^0 = v(y^0 - CV, G^0 + \Delta G) + E^0 + \alpha f(\Delta G). \quad (5)$$

Consider next the WTA that the individual would need in compensation for a ΔG decrease in G , when starting from $\{y^0 - CV, G^0 + \Delta G\}$. Denoting this amount EV it follows that:

$$v(y^0 - CV, G^0 + \Delta G) + E^0 = v(y^0 - CV + EV, G^0) + E^0 - \beta f(\Delta G). \quad (6)$$

Combining (5) and (6) we obtain:

$$v(y^0 - CV + EV, G^0) - v(y^0, G^0) = (\beta - \alpha) f(\Delta G). \quad (7)$$

The right-hand side of (7) is clearly larger than zero if and only if $\beta > \alpha$. Since the sub-utility function v is monotonically increasing in y , we clearly have that $EV > CV$ if and only if $\beta > \alpha$. In other words, given that the initial conditions are modified in the suggested way, the individual would be willing to pay more in the WTA treatment than in the WTP treatment if and only if $\beta > \alpha$, i.e. if and only if the emotional reactions of induced G changes are asymmetric and larger in the WTA treatment.⁷

⁷ Presumably, the consequences for the WWF project resulting from an additional individual donation is small in the present experiment. Indeed, if the subjects take G as given, then clearly everything is driven by the changes in E in the discussed model. Still, the experimental design isolates the effects through E also in the case where the subjects do *not* take G as given.

2.3. Hypotheses

We are now ready to specify a number of hypotheses that are testable with an experimental design where the initial conditions are modified as outlined above. Let us start with the conventional theory, suggesting that the framing should not matter *per se*:

Hypothesis 0: People are equally willing to donate to the WWF project in the WTP and in the WTA treatments. Opposing this hypothesis, we have our alternative theory:

Hypothesis 1: Those in the WTA condition donate to the WWF project to a larger extent than those in the WTP condition. Provided that the results are consistent with Hypothesis 1, the following explanation is suggested:

Hypothesis 2: Not donating to the WWF project causes stronger negative emotions, such as shame, in the WTA condition than in the WTP condition. Since the emotional reactions are supposed to arise for moral reasons, we have:

Hypothesis 3: Not donating to the WWF project is perceived to be less moral, or more immoral, in the WTA condition than in the WTP condition. Since our alternative theory above suggests that the *only* reasons why people would be more willing to donate in the WTA treatment are differences in emotions and moral perception, we have:

Hypothesis 4: When correcting for differences in relevant negative emotions and moral perceptions, there is no remaining statistically significant difference between the conditions with respect to the extent to which people donate to the WWF project. Thus, if Hypothesis 4 is correct, then emotions and moral perceptions account for all or almost all of the WTA-WTP discrepancy observed. While the empirical results reported in Section 4 turn out to be inconsistent with Hypothesis 0 in terms of reflecting the conventional theory, they are broadly consistent with all other hypotheses.

3. The experiment

Ninety-nine students recruited from a pool of subjects participated in the study. The participants were randomly assigned to two groups of approximately the same size, with 34 females and 17 males in the WTA group and 28 females and 20 males in the WTP group. The study was conducted as a single real-money dichotomous-choice experiment. This procedure was chosen because we wanted to make certain that the monetary choice conditions were identical in both conditions. Following Plott and Zeiler (2005), we also ensured that the experimental design fulfilled the requirements of subject anonymity, of an incentive-compatible elicitation mechanism and of the procedures being simple enough to prevent misunderstandings.

One week before the actual experiment, the participants were contacted by e-mail. Once they had accepted participating in the study, a new e-mail informed the participants about the prerequisites of the respective condition they were randomly assigned to. Participants in the WTP condition were informed that they would receive SEK 150 (approximately 20 US dollars) for their participation. In the WTA group, the participants were instead informed that they would be paid SEK 50 for participating and that an additional SEK 100 would be donated to the World Wide Fund (WWF) for Nature's ongoing project 'Protecting the Swedish otter'. We assumed that most people have a favourable attitude towards the WWF and believe that the organisation contributes to environmental protection. Since the otter project was presently going on in Sweden, the decision situation introduced in the experiment was realistic. Nobody declined participation after having been informed about the compensation.

At the time of the experiment, the participants were reminded about their compensation. At the same time, they were informed that they now had a choice. Those in the WTA condition were told that rather than donating to the WWF, they could keep all money for

themselves. The participants in the WTP condition were informed that although they could keep all the money, they could instead donate SEK 100 to the WWF otter project and keep SEK 50 for themselves. It was emphasised that the choice was entirely up to them. Furthermore, we used a double-blind procedure, and the instructions made clear that the choice was perfectly anonymous (see Appendix). This procedure was used since there is evidence that the degree of anonymity may strongly affect people's responses in this type of choice situation (Hoffman et al., 1994; List et al., 2004). The money and, where appropriate, a receipt for the payment to the WWF were sent to the participants within a week after the experiment.

Hence, the participants in both groups chose between keeping all the money for themselves (alternative A) and donating SEK 100 to the WWF and keeping SEK 50 (alternative B). Consequently, the conventional microeconomic theory for the typically observed WTA-WTP discrepancy can clearly not explain any differences here, since the monetary outcomes are identical in both settings.

After they had been instructed about their choice alternatives but before they made their choices, the participants rated *affect* with regard to choosing A and B, respectively. We use self-reported emotions following e.g. Bosman and van Winden (2002) and many studies in psychology.⁸ Following Peters, Slovic and Gregory (2003), the posed question was: 'If you choose alternative A/B, how will you feel?' The question was followed by sixteen different emotions, and the respondents rated themselves in terms of each emotion on a 0-4 scale: 'not

⁸ This is by far the most common method in psychology, and it is generally not considered to be less reliable than physiological measures (e.g. skin conductance or neural responses) or behavioural changes such as facial expressions. According to Robinson and Clore (2002, 934): 'Self-report is the most common and potentially the best (...) way to measure a person's emotional experiences.' Ben-Shakhar et al. (2007) found a positive correlation between self-reported and physiologically measured emotions, and argued that this finding supports the use of self-reported emotions. Moreover, 'social emotions' such as shame and guilt are difficult to assess directly through physiological or behavioural measures (Adolphs, 2002; Tangney and Dearing, 2002).

at all' (0), 'a little' (1), 'slightly' (2), 'quite a bit' (3), and 'very intense' (4). Eleven of the emotions represented the negative domain and were sampled from PANAS-X (Watson and Clark, 1994) and Higgins (1987): *Dissatisfied with self*, *Disgusted with self*, *Ashamed*, *Guilty*, *Uncomfortable*, *Annoyed*, *Tense*, *Uneasy*, *Bothered*, *Embarrassed* and *Feeling downcast*. *Regretful* was added to this list. Also included were four emotions, taken from the same sources, measuring positive affect: *Happy*, *Satisfied*, *Calm* and *Confident*. *Immoral* was captured by asking to what extent it was perceived to be morally good or bad to choose alternative A and B, respectively. Responses were given on a 0-6 scale that was anchored by 'morally very bad' (6) and 'morally very good' (0), with a mid-point of 'neither morally good nor bad' (3).

4. Results

Table 1 reveals that the donation choices differ significantly and substantially between the framings; in the WTP setting only 9 out of 48 participants chose to donate while in the WTA group 23 out of 51 did. This finding is consistent with *Hypothesis 1*.

<<**Table 1 about here**>>

The reported strength of the negative feelings from not donating to the WWF generally appears to be quite weak. This is not surprising given that a clear majority chose not to donate. Concerning differences between the groups, negative emotions were stronger in the WTA framing, consistent with *Hypothesis 2*; the largest differences were found for the negative emotions *Annoyed*, *Disgusted with self*, *Regretful*, *Uncomfortable*, *Dissatisfied with self* and *Ashamed*, which follows intuition given the moral character of the issue. We have no clear hypotheses regarding the emotions associated with choosing the altruistic alternative, i.e. donating to the WWF project, and there were no significant differences between the groups,

based on a simple equal means *t*-test. Consistent with *Hypothesis 3*, we found that the perceived degree of immorality for choosing not to donate was higher in the WTA framing.

In order to test *Hypothesis 4* we ran a probit regression where the choice to donate (or not) was the dependent variable. In Model 1, where we do not correct for emotions or perceived immorality, the parameter associated with the WTA framing is positive and highly significant, again consistent with *Hypothesis 1*. Perhaps not very surprisingly, all the negative emotions discussed (for which there are significant differences between the framings) are strongly positively correlated; the same applies for the correlation between these negative emotions and perceived immorality. This implies a potential problem of multicollinearity, which makes it difficult to separate the effects of the different emotions and immorality. The pattern observed in Model 2, where we include all of the negative emotions discussed, is typical for a model with multicollinearity. For example, the sign of the parameter associated with *Annoyed* is negative (and significant at about the 15% level). Yet, when we ran models with only one emotion or with only perception of immorality (in addition to an intercept and the dummy variable for framing), the associated parameters were always significant at the 5% level or better.

In order to deal with these problems we applied the extreme bound analysis suggested by Leamer (1983, 1985). In doing so we always included an intercept and the framing dummy variable, and we included all possible combinations of emotions and perception of immorality, i.e. from one to seven explanatory variables, implying 127 regressions in total. A variable is considered to be robust if the associated parameter does not change sign and always has a *t*-statistic of two or higher, implying that the parameter in each of the regressions is significant at the 5% level or better. In our case the variables *Disgusted with self* and *Regretful* turned out to be robust, but no others (the latter is already evident from Model 2). We therefore ran the regressions with only these emotions together with *Immorality* in Model

3, and without *Immorality* in Model 4. However, as argued by e.g. Sala-i-Martin (1997), the extreme bound analysis is quite restrictive. Even though this implies a strong support for the importance of *Disgusted with self* and *Regretful*, it is less straightforward to argue that the other emotions and perceived immorality are unimportant.

<<Table 2 about here>>

Based on likelihood ratio tests we can reject Model 1 in favour of either Model 2, 3 or 4 individually at the 1% significance level. However, we cannot reject Model 3 or 4 in favour of Model 2, or Model 4 in favour of Model 3, at the 10% level. We also included a gender variable, and for a sub-sample a variable reflecting the extent to which environmental values serve as a guiding principle in life,⁹ but the associated parameters were never significant at conventional levels (these results are available from the authors upon request). The latter finding supports earlier evidence that stated responses often constitute poor predictions of real behaviour (e.g. Glaeser et al., 2000). Finally, in line with *Hypothesis 4*, the WTA parameter is statistically insignificant at conventional levels. Thus, the results suggest that affective responses could account for most of the WTA-WTP discrepancy for goods with a perceived moral character.¹⁰

5. Conclusion

This paper has analysed whether differences in emotions and moral perceptions can account for parts or all of the discrepancy found between a WTA and a WTP framing when ranking two allocations involving a good with a perceived moral character. In a simple valuation experiment where the monetary outcomes with respect to money given to the participants

⁹ One month before the experiment, a subset of the participants ($n = 58$) completed a longer questionnaire.

¹⁰ An alternative but strongly related explanation is based on implicit contract theory: An individual may in the WTA frame perceive an implicit contract that a certain amount of the money should go to the WWF, and that the individual may experience regret, guilt or similar feelings if he/she breaks this implicit contract, regardless of how the individual feels about otters or the WWF *per se*.

themselves and to a WWF project are identical in the two framings, it is shown that after correcting for measured affective influences and moral reactions, there is no significant remaining difference between the WTA and the WTP framings. Since there is no corresponding ethical dimension when valuing standard consumption goods, this finding resembles the result in Plott and Zeiler (2005), who found no significant WTA-WTP discrepancy in the valuation of lotteries and mugs when using a design that is incentive compatible (like ours) and that simultaneously attempts to control for different kinds of misconceptions. Similarly, using luxury chocolates, Bateman et al. (2005) found quite small differences for most comparisons.

We conjecture that emotional experiences, and possibly moral perceptions, may well also explain why the observed WTA-WTP gap is typically larger for public than for private goods. In order to shed light on the extent to which the results here can be generalised, we encourage the use of alternative experimental setups, goods (including standard consumption goods) and follow-up questions, and possibly also an fMRI machine to measure emotions in an alternative way.

Acknowledgement: We have received very constructive comments from Martin Dufwenberg, Peter Martinsson, Fredrik Carlsson, Leonardo Felli, Niklas Karlsson, Karine Nyborg, Sigbjørn Birkeland and participants at the *Social and Moral Norms in Intentional Actions* workshop in Oslo. Financial support from the Swedish Research Council and through Grant I-25-01 from the Swedish Environmental Protection Agency is gratefully acknowledged.

References

- Adolphs, R. (2002). 'Recognizing emotion from facial expressions: psychological and neurological mechanisms', *Behavioral and Cognitive Neuroscience Reviews*, vol. 1(1), pp. 21–61.
- Amiran, E. Y., and Hagen, D. A. (2003). 'Willingness to pay and willingness to accept: How much can they differ? Comment', *American Economic Review*, vol. 93, pp. 458-63.
- Amiran, E. Y., and Hagen, D. A. (2010). 'The scope trials: Variation in sensitivity to scope and WTP with directionally bounded utility functions', *Journal of Environmental Economics and Management*, vol. 59, pp. 293-301.
- Andreoni, J. (1989). 'Giving with impure altruism: applications to charity and Ricardian equivalence', *Journal of Political Economy*, vol. 97, pp. 1447-1458.
- Andreoni, J. (1990). 'Impure altruism and donations to public goods: A theory of warm-glow giving', *Economic Journal*, vol. 100, pp. 464-477.
- Appiah, K. A. (2008). *Experiments in Ethics*, Cambridge Mass.: Harvard University Press.
- Ashraf, N., Camerer, C. F. and Loewenstein, G. (2005). 'Adam Smith, behavioral economist', *Journal of Economic Perspectives*, vol. 19, pp. 131-45.
- Baron, J., and Ritov, I. (1994). 'Reference points and omission bias', *Organizational Behavior and Human Decision Processes*, vol. 59, pp. 475-498.
- Bateman, I., Kahneman, D., Munro, A., Starmer, C. and Sugden, R. (2005). 'Testing competing models of loss aversion: an adversarial collaboration', *Journal of Public Economics*, vol. 89, pp. 1561-80.
- Ben-Shakhar, G., Bornstein, G., Hopfensitz, A. and van Winden, F. (2007). 'Reciprocity and emotions in bargaining using physiological and self-report measures', *Journal of Economic Psychology*, vol. 28(3), pp. 314–23.
- Bosman, R, Sutter, M. and Van Winden, F. (2005). 'The impact of ideal effort and emotions in the power-to-take game', *Journal of Economic Psychology*, vol. 26, pp. 407-29.
- Bosman, R., and van Winden, F. (2002). 'Emotional hazard in a power to take experiment', *Economic Journal*, vol. 112, pp. 147–169.
- Boyce, R. R., Brown, T. C., McClelland, G. H., Peterson, G. L., and Schulze, W. D. (1992). 'An experimental examination of intrinsic values as a source for the WTA-WTP disparity', *American Economic Review*, vol. 82, pp. 1366-1373.
- Brekke, K. A., S. Kverndokk and K. Nyborg (2003), An economic model of moral motivation, *Journal of Public Economics*, 87, 1967-83.

- Camerer, C., Loewenstein, G., and Prelec, D. (2005). 'Neuroeconomics: How neuroscience can inform economics', *Journal of Economic Literature*, vol. 43, pp. 9-64.
- Cohen, J. D. (2005). 'The vulcanization of the human brain: A neural perspective on interactions between cognition and emotion', *Journal of Economic Perspectives*, vol. 19, pp. 3-24.
- Evensky, J. (2005). 'Adam Smith's *Theory of Moral Sentiments*: On morals and why they matter to a liberal society of free people and free markets', *Journal of Economic Perspectives*, vol. 19, pp. 109-30.
- Fehr, E., Fischbacher, U. and Kosfeld, M. (2005). 'Neuroeconomic foundations of trust and social preferences', *American Economic Review, Papers and Proceedings*, vol. 95, pp. 346-51.
- Glaeser, E. L., Laibson, D. I., Scheinkman, J.A., and Soutter, C.L. (2000). 'Measuring trust', *Quarterly Journal of Economics*, vol. 115, pp. 811-846.
- Hanemann, W. M. (1991). 'Willingness to pay and willingness to accept: How much can they differ?', *American Economic Review*, vol. 81, pp. 635-647.
- Hanemann, W. M. (1994). 'Valuing the environment through contingent valuation', *Journal of Economic Perspectives*, vol. 8, pp. 19-43.
- Hoffman, E., McCabe, K. Shachat, K., and Smith, V. (1994). 'Preferences, property rights, and anonymity in bargaining games', *Games and Economic Behavior*, vol. 7, pp. 346-80.
- Hopfensitz, A. and Reuben, E. (2009). 'The importance of emotions for the effectiveness of social punishment', *Economic Journal*. Vol. 119, pp.1534-1559.
- Horowitz, J. K., List, J. and McConnell, K. E. (2007). 'A test of diminishing marginal value', *Economica*, vol. 74, pp. 650-663.
- Horowitz, J. K., and McConnell, K. E. (2002). 'A review of WTA/WTP studies', *Journal of Environmental Economics and Management*, vol. 44, pp. 426-447.
- Horowitz, J.K., and McConnell, K.E. (2003). 'Willingness to accept, willingness to pay and the income effect', *Journal of Economic Behavior and Organization*, vol. 51, pp. 537-45.
- Huck, S., Kirchsteiger, G., and Oechssler, J. (2005). 'Learning to like what you have – explaining the endowment effect', *Economic Journal*, vol. 115, pp. 689-702.
- Irwin, J. R. (1994). 'Buying/selling price preference reversals: Preference for environmental changes in buying versus selling modes', *Organizational Behavior and Human Decision Processes*, vol. 60, pp. 431-457.

- Johansson-Stenman, O., and Svedsäter, H. (2008). 'Self image and valuation of public goods: Stated versus actual willingness to pay', Working paper, Department of Economics, University of Gothenburg.
- Kahneman, D., and Knetsch, J. L. (1992). 'Valuing public goods: The purchase of moral satisfaction', *Journal of Environmental Economics and Management*, vol. 22, pp. 57-70.
- Kahneman, D., Knetsch, J. L., and Thaler, R. H. (1990). 'Experimental tests of the endowment effect and the Coase theorem', *Journal of Political Economy*, vol. 98, pp. 1325-1348.
- Kahneman, D., and Tversky, A. (1979). 'Prospect theory: An analysis of decisions under risk', *Econometrica*, vol. 47, pp. 263-291.
- Knetsch, J. L. (1989). 'The endowment effect and evidence of nonreversible indifference curves', *American Economic Review*, vol. 79, pp. 1277-1284.
- Knetsch, J. L. (2000). 'Environmental valuations and standard theory: Behavioural findings, context dependence, and implications', In T. Tietenberg and H. Folmer (Eds.), *The International Yearbook of Environmental and Resource Economics 2000/2001*, pp. 267-299. Cheltenham: Edward Elgar.
- Leamer, E. (1983). 'Let's take the con out of econometrics', *American Economic Review*, vol. 73, pp. 31-43.
- Leamer, E. (1985). 'Sensitivity analysis would help', *American Economic Review*, vol. 75, pp. 308-13.
- List, J. A., Berrens, P., Bohara, A. K., and Kerkvliet, J. (2004). 'Examining the role of social isolation on stated preferences', *American Economic Review*, vol. 94, pp. 741-752.
- Nyborg, K. (2000). 'Homo economicus and homo politicus: Interpretation and aggregation of environmental values', *Journal of Economic Behavior and Organization*, vol. 42, pp. 305-322.
- Nyborg, K. and Brekke K. A (2010) Selfish Bakers, Caring Nurses? A Model of Work Motivation, *Journal of Economic Behavior and Organization* 75, 377-394.
- Peters, E., Slovic, P., and Gregory, R. (2003). 'The role of affect in the WTA/WTP disparity', *Journal of Behavioral Decision Making*, vol. 16, pp. 309-330.
- Plott, C. R., and Zeiler, K. (2005). 'The willingness to pay-willingness to accept gap, the "endowment effect," subject misconceptions, and experimental procedures for eliciting valuations', *American Economic Review*, vol. 95, pp. 530-45.
- Plott, C. R., and Zeiler, K. (2007). 'Asymmetries in exchange behavior incorrectly interpreted as evidence of prospect theory?', *American Economic Review*, vol. 97, pp. 1449 - 1466.

- Randall, A., and Stoll, J. R. (1980). 'Consumer's surplus in commodity space', *American Economic Review*, vol. 70, pp. 449-55.
- Robinson, M. D. and Clore, G. L. (2002). 'Belief and feeling: Evidence for an accessibility model of emotional self-report', *Psychological Bulletin*, vol. 128, pp. 934-60.
- Sala-i-Martin, X. (1997). 'I just ran two million regressions', *American Economic Review*, vol. 87, pp. 178-183.
- Sayman, S. and Öncüler, A. (2005). 'Effects of study design characteristics on the WTA–WTP disparity: A meta analytical framework', *Journal of Economic Psychology*, vol. 26, pp. 289-312.
- Shogren, J. F., Shin, S. Y., Hayes, D. J., and Kliebenstein, J. B. (1994). 'Resolving differences in willingness to pay and willingness to accept', *American Economic Review*, vol. 84, pp. 255-270.
- Singer, T. and Fehr, E. (2005). 'The neuroeconomics of mind reading and empathy', *American Economic Review, Papers and Proceedings*, vol. 95, pp. 340-345.
- Spranca, M., Minsk, E., and Baron, J. (1991). 'Omission and commission in judgment and choice', *Journal of Experimental Social Psychology*, vol. 27, pp. 76-105.
- Sugden, R., (1999). 'Alternatives to the neoclassical theory of choice', in: K. G. Willis (Ed.), *Valuing Environmental Preferences: Theory and Practice of the Contingent Valuation 26*, pp. 152-180. Oxford: Oxford University Press.
- Sutter, M., Haigner, S., Kocher, M. (2010). Choosing the stick or the carrot? Endogenous institutional choice in social dilemma situations. *Review of Economic Studies* 77 (4): 1540-1566.
- Tangney, J.P. and Dearing, R.L. (2002). *Shame and Guilt*, New York, NY: The Guilford Press.
- Tversky, A. and Kahneman, D. (1991). 'Loss aversion in riskless choice: A reference dependent model', *Quarterly Journal of Economics*, vol. 106, pp. 1039-1061.
- Watson, D., and Clark, L.A. (1994). *The PANAS-X. Manual for the positive and negative affect schedule – expanded form* (updated 8/99). The University of Iowa.

Table 1
Mean index values of choice (donate or not)

	WTP framing	WTA framing	<i>t</i> -test for equal means Prob-value	Wilcoxon-Mann- Whitney test for the same underlying distribution Prob-value (2-tailed)
Share donating to WWF	18.7%	45.1%	0.005 ^{***}	0.005 ^{***}
<u>Anticipated emotions if choosing A (not donate)</u>				
Annoyed	0.79	1.33	0.008 ^{***}	0.004 ^{***}
Embarrassed	0.81	1.16	0.088 [*]	0.099 [*]
Uneasy	0.91	1.10	0.395	0.329
Happy	2.44	2.08	0.138	0.138
Disgusted with self	0.79	1.33	0.012 ^{**}	0.014 ^{**}
Regretful	0.79	1.39	0.007 ^{***}	0.009 ^{***}
Tense	0.75	0.96	0.230	0.177
Calm	2.46	2.31	0.504	0.796
Feeling downcast	0.46	0.65	0.280	0.525
Bothered	0.73	0.96	0.249	0.132
Guilty	0.83	1.12	0.180	0.091 [*]
Satisfied	2.08	1.78	0.197	0.174
Dissatisfied with self	0.75	1.53	0.000 ^{***}	0.001 ^{***}
Uncomfortable	0.90	1.29	0.059 [*]	0.050 ^{**}
Ashamed	0.62	1.29	0.001 ^{***}	0.000 ^{***}
Confident	2.48	2.29	0.461	0.498
<u>Anticipated emotions if choosing B (donate)</u>				
Annoyed	0.71	0.57	0.447	0.218
Embarrassment	0.25	0.24	0.899	0.609
Uneasy	0.62	0.57	0.747	0.918
Happy	2.19	2.51	0.156	0.096 [*]
Disgusted with self	0.79	0.63	0.402	0.637
Regretful	1.15	0.88	0.260	0.251
Tense	0.62	0.49	0.429	0.636
Calm	2.29	2.45	0.466	0.362
Feeling downcast	0.54	0.47	0.661	0.539
Bothered	0.35	0.39	0.786	0.950
Guilty	0.29	0.29	0.987	0.755
Satisfied	2.31	2.45	0.552	0.470
Dissatisfied with self	0.79	0.68	0.601	0.421
Uncomfortable	0.54	0.49	0.773	0.940
Ashamed	0.15	0.14	0.934	0.923
Confident	2.42	2.57	0.531	0.351
Perceived Immorality if choosing A (not donate)	3.04	3.76	0.016 ^{**}	0.022 ^{**}
Perceived Immorality if choosing B (donate)	1.22	1.00	0.298	0.170
<i>n</i>	48	51		

Note: Emotions are measured on a 0-4 scale, and immorality on a 0-6 scale for the WTP and WTA framings, respectively. Standard deviations are presented in parentheses. Alternative A implies SEK 150 to oneself, whereas alternative B implies SEK 50 to oneself and SEK 100 to the WWF (irrespective of framing). Superscripts *, ** and *** denote statistical significance at the 10%, 5% and 1% levels, or better, respectively.

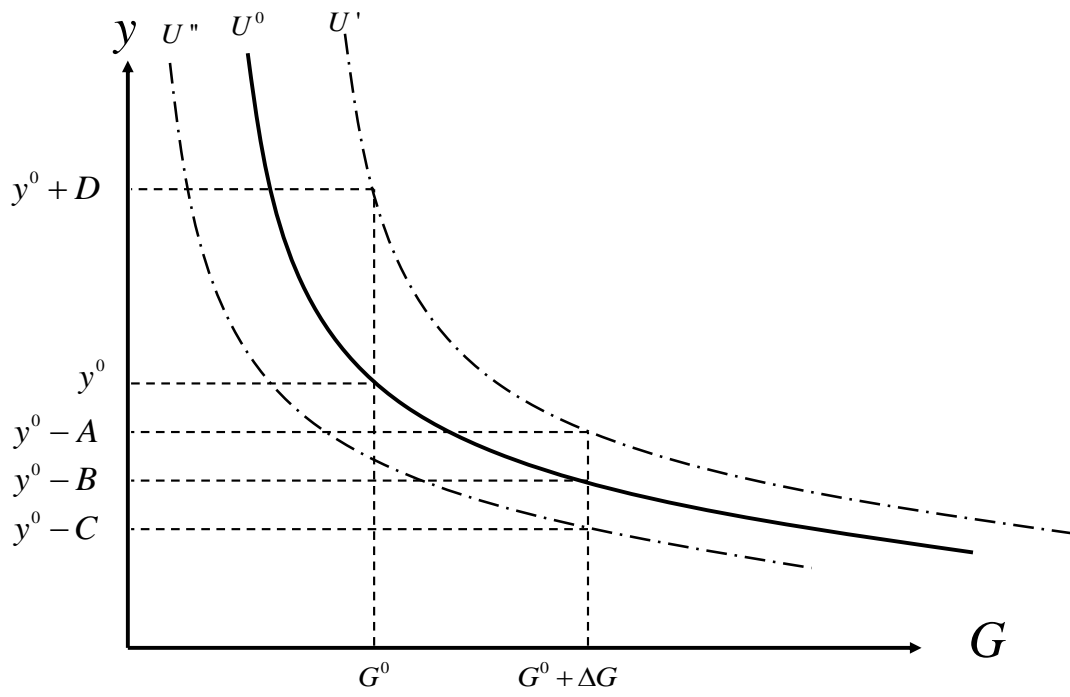
Table 2

Probit regression on the choice to donate

	Model 1	Model 2	Model 3	Model 4
Constant	-0.313 ^{***} (5.23)	-0.826 ^{***} (2.94)	-0.848 ^{***} (3.11)	-0.996 (6.86)
WTA	0.263 ^{***} (2.94)	0.134 (1.20)	0.121 (1.13)	0.125 (1.16)
Annoyed		-0.142 (1.45)		
Disgusted with self		0.212 ^{***} (2.54)	0.186 ^{***} (2.79)	0.194 ^{***} (2.92)
Regretful		0.195 ^{***} (2.65)	0.142 ^{***} (2.39)	0.156 ^{***} (2.77)
Dissatisfied with self		-0.001 (0.02)		
Uncomfortable		-0.026 (0.33)		
Ashamed		-0.069 (0.89)		
Immorality		0.023 (0.51)	0.029 (0.63)	
Log likelihood	-58.27	-37.35	-39.01	-39.21
<i>N</i>	99	99	99	99

Note: The parameters reflect marginal effects; t-values (absolute values) are shown in parentheses. The explanatory variables reflect the WTA framing (0-1 scale), the emotions (0-4 scale) and perceived immorality (0-6 scale) of choosing alternative A, i.e. not to donate. Superscripts *, ** and *** denote statistical significance at the 10%, 5% and 1% levels, or better, respectively.

Figure 1.
Indifference curve in the y - G space and WTP/WTA measures for changes in G



Appendix: Instructions to participants (translated from Swedish)

Initial information to the respondents in the WTP treatment:

Welcome, and thank you for participating in this study!

In line with earlier information, you will receive SEK 150 as a compensation for your participation.

Now, if you wish, you may instead choose to donate SEK 100 out of the 150 to the World Wide Fund for Nature's (WWF) ongoing project 'Protecting the Swedish Otter'.

Initial information to the respondents in the WTA treatment:

Welcome, and thank you for participating in this study!

In line with earlier information you will receive SEK 50 while SEK 100 will be donated to the World Wide Fund for Nature's (WWF) ongoing project 'Protecting the Swedish Otter'.

Now, if you wish you may choose to keep the SEK 100 that otherwise would have gone to WWF.

[The following part of the instructions was identical for both treatments.]

We have no opinion in the matter and your choice is completely anonymous. You will receive your money and, if applicable, a receipt for the donation to WWF in your mailbox within a week from now.

To guarantee anonymity, the payment will be made as follows: Next to you is an envelope where you write your name and the address to which the money should be sent. After you have done that, place the envelope upside down. When you are through with the questionnaire, please leave it on the table. Our research assistant will check which option you chose and then put the corresponding amount in the envelope ***without looking at your address***. Should you choose to donate to WWF, the same assistant will transfer the money and put the receipt in the same envelope. He will then mail it and you will receive the envelope within a week. This procedure is used to guarantee complete anonymity. In the data set that will be analysed by the researchers, no names or any other information that can be used to identify individuals will appear. Nobody except yourself will know which choice you made.

If you have understood the instructions, please turn to the next page.

(New page)

You may choose between two alternatives, A and B.

Alternative A. You will receive SEK 150

Alternative B. You will receive SEK 50 and the WWF SEK 100

Before you make your choice, if you choose alternative A, how will you feel? (you receive SEK 150):

	Not at all	A little	Slightly	Quite a bit	Very intense
Annoyed	<input type="checkbox"/>	<input type="checkbox"/>	<input type="checkbox"/>	<input type="checkbox"/>	<input type="checkbox"/>
...
...
Tense	<input type="checkbox"/>	<input type="checkbox"/>	<input type="checkbox"/>	<input type="checkbox"/>	<input type="checkbox"/>

(New page)

If you choose alternative B, how will you feel ? (You receive SEK 50 and the WWF SEK 100):

	Not at all	A little	Slightly	Quite a bit	Very intense
Annoyed	<input type="checkbox"/>	<input type="checkbox"/>	<input type="checkbox"/>	<input type="checkbox"/>	<input type="checkbox"/>
...
...
Tense	<input type="checkbox"/>	<input type="checkbox"/>	<input type="checkbox"/>	<input type="checkbox"/>	<input type="checkbox"/>

(New page)

Now it is time for you to make your choice. Again, we have no opinion in the matter and your choice is completely anonymous.

Do you choose alternative A or B?

- Alternative A. You will receive SEK 150.
- Alternative B. You will receive SEK 50 and the WWF SEK 100.

(New page)

The choices of consumers or citizens may be affected by many factors. In certain areas, moral aspects can play a role. Consider the choice you just made from a moral perspective.

How morally good or bad do you consider Alternative A (you receive SEK 150) to be?

<input type="checkbox"/>	<input type="checkbox"/>	<input type="checkbox"/>	<input type="checkbox"/>	<input type="checkbox"/>	<input type="checkbox"/>	<input type="checkbox"/>
Morally very bad	Morally pretty bad	Morally rather bad	Neither nor	Morally rather good	Morally pretty good	Morally very good

How morally good or bad do you consider Alternative B (you receive SEK 50 and the WWF SEK 100) to be?

<input type="checkbox"/>	<input type="checkbox"/>	<input type="checkbox"/>	<input type="checkbox"/>	<input type="checkbox"/>	<input type="checkbox"/>	<input type="checkbox"/>
Morally very bad	Morally pretty bad	Morally rather bad	Neither nor	Morally rather good	Morally pretty good	Morally very good

Thank you for your assistance!