

**On the stimulatory effect of microglial cells  
on angiogenesis**

Simin F. Rymo



**UNIVERSITY OF GOTHENBURG**

Institute of Biomedicine

Department of Medical Biochemistry and Cell Biology

The Sahlgrenska Academy

2011

Cover picture: An aortic ring in the 3-dimensional culture system.

**ISBN:** 978-91-628-8285-3

**URL:** <http://hdl.handle.net/2077/25302>

© Simin F. Rymo

Institute of Biomedicine

Department of Medical Biochemistry and Cell Biology

The Sahlgrenska Academy at University of Gothenburg

Printed by Intellecta Infolog AB

Göteborg, Sweden, 2011

*To Lars; my partner and great love in life*

*To my dear children, Irma, Embla and LarsLove*

*To all of you that have stood by my side during this journey*

# ABSTRACT

Angiogenesis, the process by which new vessels sprout from pre-existing vessels, is fundamental to development, tissue growth and repair. Many factors affect angiogenesis, acting either as inhibitors or activators of the process. The main aim of this thesis was to investigate the role of microglia on angiogenesis. To facilitate the study, we applied the *ex vivo/in vitro* aortic ring model. The model, originally established for rat, was adapted to mouse and developed to function without excess addition of growth factors in a 3-D environment that mimics the *in vivo* situation, while disconnecting angiogenic sprouting from potential systemic confounding factors. In paper I, we showed that ablation of microglia in the retina leads to a poorly developed vascular network. The aortic ring model supplied with microglia showed that microglia has a positive effect on angiogenic sprouting. This effect was mediated by a soluble factor(s), and cell-cell contacts were not required. We also showed that the microglia-derived angiogenic factor(s) is distinct from vascular endothelial growth factor-A. Moreover, the sprouting aortic ring induces oriented migration of microglia towards the aortic ring. In paper II, we analysed the microglia transcriptome. We found that microglia express known activators and inhibitors of angiogenesis that might have a role in retinal blood vessel development. The aortic ring system was also used as a complement to *in vivo* analyses to address the function of sphingosine-1-phosphate receptor 1 (S1P<sub>1</sub>) on angiogenesis (paper III). The results indicated that S1P<sub>1</sub> is required in endothelial cells to control vascular sprouting and tip cell formation. S1P<sub>1</sub>-deficient mice display endothelial hyper-sprouting, and S1P<sub>1</sub> counteracts VEGF-A-induced sprouting. In paper IV, mice that express Cre from the endothelial/hematopoietic Tie2 promoter were used to mark transplanted bone marrow cells. The study aimed to address if grafted bone marrow cells can differentiate into pancreatic  $\beta$ -cells. The major part of the thesis concerns the establishment and use of the mouse aortic ring as a model for angiogenesis. The results indicated that the system can be used to identify and test putative modifiers of angiogenesis. Importantly, application of the aortic ring system enabled us to identify a positive effect of microglia on angiogenesis, which we could further pursue by microarray analyses. The presented work might therefore provide a platform for the identification of molecules that regulate angiogenesis.

**Key words:** microglia, angiogenesis, aortic ring.

# LIST OF PUBLICATIONS

This thesis is based on the following papers, which are referred to in the text by their roman numerals.

- I. **Simin F. Rymo**, Holger Gerhardt, Fredrik Wolfhagen Sand, Richard Lang, Anne Uv, Christer Betsholtz.  
A Two-Way Communication between Microglial Cells and Angiogenic Sprouts Regulates Angiogenesis in Aortic Ring Cultures.  
PLoS One. 2011 Jan 10;6(1):e15846.
  
- II. **Simin F. Rymo**, Zulfeghar A. Syed, Anne Uv and Christer Betsholtz.  
A transcriptional profiling approach to identify microglia-derived factors that stimulate angiogenesis in aortic ring cultures.  
Manuscript
  
- III. Konstantin Gaengel, Kazuhiro Hagikura, Colin Niaudet, Lars Muhl, Staffan Nyström, **Simin F. Rymo**, Bärbara Laviña Siensen, Jennifer Hofmann, Lwaki Ebarasi, Long Long Chen, Karin Strittmatter, Guillem Genove, Pernilla Roswall, Peter Lönneberg, Per Uhlen, Anne Uv, Arindam Majumdar, Richard L. Proia and Christer Betsholtz.  
SIP<sub>1</sub> is a critical regulator of angiogenesis.  
Manuscript
  
- IV. Anders H. Rosengren, Jalal Taneera, **Simin Rymo**, and Erik Renström.  
Bone marrow transplantation stimulates pancreatic  $\beta$ -cell replication after tissue damage.  
Islets. 2009 Jul-Aug;1(1):10-8.

# TABLE OF CONTENTS

ABSTRACT	4
LIST OF PUBLICATIONS	5
ABBREVIATIONS	7
INTRODUCTION	8
<i>Structure and function of blood vessels</i>	9
<i>Blood vessel formation</i>	11
<i>Angiogenic sprouts consist of specialized endothelial cells</i>	13
<i>Induction of tip cell formation by VEGFR2 and Dll4</i>	14
<i>Retinal angiogenesis</i>	19
<i>Microglial cells</i>	22
<i>Methods</i>	23
AIMS OF THIS STUDY	25
<i>A two-way communication between microglial cells and angiogenic sprouts regulates angiogenesis in aortic ring cultures (Paper I)</i>	26
Background	26
Results and Discussion	27
Conclusions	31
<i>Identification of microglia-derived candidate regulatory factors with putative role in vessel formation by transcriptional profiling of microglia (Paper II)</i>	32
Background	32
Results and Discussion	32
Conclusions	35
<i>S1P<sub>1</sub> is a critical regulator of angiogenesis (Paper III)</i>	36
Background	36
Results and Discussion	37
Conclusions	40
<i>Bone marrow transplantation stimulates pancreatic <math>\beta</math>-cell replication after tissue damage (Paper IV)</i>	41
Background	41
Results and Discussion	42
Conclusions	44
REFERENCES	48

# ABBREVIATIONS

AJ	adherence junctions
Ang	angiopoietin
BM	basement membrane
bFGF	basic fibroblast growth factor
BMP4	bone morphogenic protein 4
BMT	bone marrow transplantation
CFS-1	growth factor colony stimulating factor 1
CNS	central nervous system
Dll4	delta like 4
ECM	extra cellular matrix
Flk1	fetal liver kinase 1
Flt	fms-like tyrosine kinase
HIF	hypoxia inducible factor
LADMAC	mouse bone marrow cell line producing CSF-1
MEF cells	mouse embryonic fibroblasts
Np	neuropilin
Pecam	platelet/endothelial cell adhesion molecule
PDGF	platelet-derived growth factor
PIGF	placental growth factor
S1P	sphingosine-1-phosphate
Shh	sonic hedgehog
SMC	smooth muscle cell
STZ	streptozotocin
SphK 1 and 2	sphingosine kinases 1 and 2
S1P1 to 5	sphingosine-1-phosphate receptors sphingosine-1-phosphate
TGF- $\alpha$	transforming growth factor alfa
Tie	tyrosine kinase with immunoglobulin- and epiderma llike domains
Tj	tight junctions
Tsp-1	thrombospondin
VEGFR-1, -2, -3	vascular endothelial growth factor receptors-1 (Flt-1), -2 (KDR), -3
VEGF-A, -B, -C	vascular endothelial growth factors -A, -B, -C
VSMC	vascular smooth muscle cell

# INTRODUCTION

The cardiovascular system is the first functional organ system of the vertebrate embryo (Coultas et al., 2005b; Flamme et al., 1997; Palis et al., 1995; Risau, 1995; Rossant and Howard, 2002; Strilic et al., 2010). When multicellular organisms grow beyond a few millimetres and pass the diffusion limit, they need to establish a vascular system to transport oxygen and liquids, remove waste products and provide the possibility for communication between organs (Risau, 1997; Schmidt and Carmeliet, 2010; Strilic et al., 2010).

Blood vessel formation during embryonic development occurs by two different mechanisms: vasculogenesis from endothelial precursor cells and angiogenesis from pre-existing vessels. The former mechanism implies *de novo* formation of blood vessels from angioblasts. The latter mechanism involves at least two ways of vessel growth, i.e. angiogenic sprouting (Adams and Alitalo, 2007; Jain and Chan, 2003; Jain, 2003; Risau and Flamme, 1995) and intussusceptive angiogenesis (Burri and Tarek, 1990; Hansen-Smith et al., 1996). Furthermore, angiogenesis is a complex multistep process comprising different stages that involves migration, specification and proliferation of endothelial cells together with maturation and stabilization of blood vessels. A number of growth factors and their receptors mediate the formation of these stages during embryonic development, including FGF/FGFR, VEGF-A/VEGFR-1 and -2, Angiopoetin1/Tie2, PDGFB/PDGFR $\beta$  and Dll4/Notch (Betsholtz, 1995; Betsholtz and Raines, 1997; Ferrara, 2002; Flamme et al., 1995; Flamme et al., 1997; Folkman, 1992; Folkman and Shing, 1992; Gerhardt et al., 2003; Leveen et al., 1994).

In the adult organism, normal angiogenesis only occurs in the ovarian cycle, during wound healing and in special cases of growing tissues, such as muscle and fat. Nevertheless, angiogenesis in adults contributes to pathogenesis, such as tumour growth, diabetic retinopathy, proliferative retinopathy, and arthritis (Folkman, 2007; Folkman and Shing, 1992). A number of angiogenic factors, including members of the VEGF and FGF gene families, stimulate both physiological and pathological angiogenesis. Inhibitors of angiogenesis, such as endostatin, thrombospondin-1 (Tsp-1), and tumstatin (Fernando et al., 2008; Folkman, 2007; Nyberg et al., 2005) participate in the regulation of angiogenesis. Under normal conditions, the



balance between stimulatory and inhibitory factors are strictly controlled and adapted to the needs of the organisms (Carmeliet and Jain, 2000). However, disturbances of the balance between these factors may lead to angiogenic complications of a variety of ischemic and proliferative disorders.

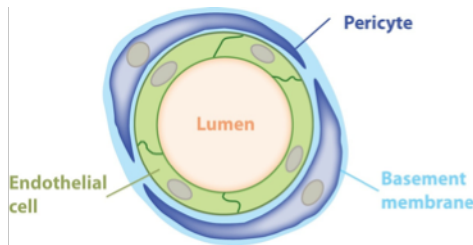
There are other mechanisms than soluble ligand/receptor-interactions that play crucial roles in the progress of angiogenesis. Cadherins and integrins are membrane-bound proteins with influence on angiogenesis through their cell-cell or cell-matrix contacts. Integrins are heterodimeric membrane-bound molecules that act as receptors on endothelial cells for extracellular matrix-components, like fibronectin, collagen, laminin and glycosaminoglycans. More than 20 integrins have been identified. *In vitro* studies have shown that  $\alpha_v\beta_3$  integrin mediates cell migration and is, during wound-healing processes, transiently localized on the tip-cell of angiogenic sprouts (Papetti and Herman, 2002).

VE-cadherin is a single transmembrane glycoprotein on endothelial cells that localizes at the adherens junctions. Junction connections are formed by  $\text{Ca}^{+2}$ -dependent binding of a cadherin molecule on an endothelial cell to the same kind of cadherin molecule on another endothelial cell. The intracellular part of cadherins is attached to catenins, thereby mediating adherens junction-signalling. An essential function of blood vessels is to be a barrier between the blood and the environment and, at the same time, to allow inter- and intracellular diffusion and transport of molecules, particles and cells. Adherens junctions play important roles in this vascular permeability (Cavallaro and Dejana, 2011).

## Structure and function of blood vessels

Blood vessels are tube-like structures, which are organized into arteries, veins, arterioles, venules and capillaries. Two different types of cells constitute the fundamental structure of blood vessels: endothelial cells and mural cells (Fig. 1) (Gerhardt and Betsholtz, 2003; Hellstrom et al., 1999). Endothelial cells line the inner wall of the tube and are connected through junctional complexes of three types: gap junctions, tight junctions (TJs) and adherens junctions (AJs). Gap junctions are specialized complexes that allow the passage of small molecules, water and ions from one cell to

another. The tight and adherens junctions are responsible for the cell-to-cell adhesion between the endothelial cells (Bazzoni and Dejana, 2004).



**Fig 1.** Typical structure of a blood vessel. Endothelial cells (green) encircle the lumen and are surrounded by a BM (pale blue). The pericytes (dark blue) are embedded in the BM.

Mural cells surround matured blood vessels. They commonly entail vascular smooth muscle cells and pericytes (Gaengel et al., 2009; Gerhardt and Betsholtz, 2003). Vascular smooth muscle cells surround the larger vessels and are often organized into multilayers, whereas pericytes are associated with smaller vessels and are found either solitary or in a discontinuous monolayered manner. RGS5 is a pericyte marker (Cho et al., 2003), and actin is widely used as a marker of vSMCs. The morphology of pericytes and the degree to which they cover the endothelial tube vary between different tissues (Betsholtz et al., 2005; Bondjers et al., 2006; Gaengel et al., 2009; Gerhardt and Betsholtz, 2003; Lindahl et al., 1997; von Tell et al., 2006).

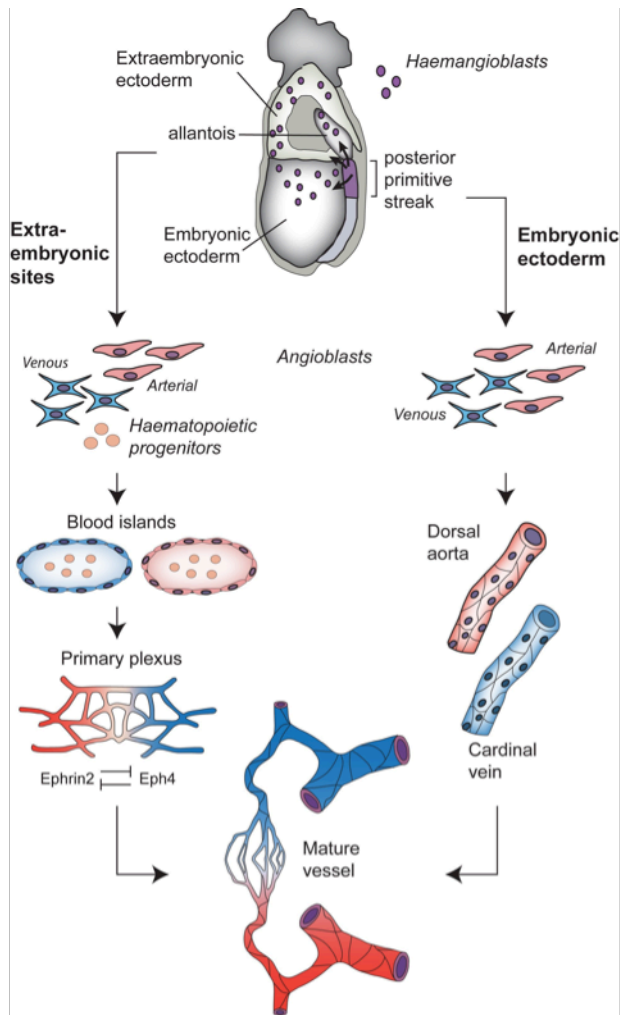
Blood vessels are embedded in a specialized extracellular matrix (ECM) called the basement membrane (BM). BM consists of different components that are highly structured and organized including collagen IV, fibronectin, laminin, heparansulfate and proteoglycans and, in minor amounts, collagen I, III and V. The BM provides attachment possibility for the cells and regulates cell survival. The organized structure of BM plays an important role in the selective permeability barrier in the retinal vasculature (Roy et al., 2010).

Recent observations have shown that the vascular system is not just a simple tubular network with a restricted task in metabolic exchange, but also serves to deliver signals to neighbouring cells, thereby playing a role in inductive signalling in development (Cleave and Melton, 2003). Besides the reciprocal signalling between the endothelium and the mural cells within the vascular wall, endothelium-derived paracrine signals seem to play crucial roles in organogenic processes, such as the formation of the pancreas and the liver (Cleave and Melton, 2003; Lammert et al., 2003).

## Blood vessel formation

In vertebrates, vascular development occurs by a series of sequential genetic and morphological events that give rise to the formation and specification of blood and vasculature. The term vasculogenesis describes the *de novo* formation of vessels from vascular endothelial precursor cells (angioblasts) (Rogers et al., 1998). During vasculogenesis, angioblasts, in response to local signals such as growth factors (bFGF, VEGF) (Carmeliet et al., 1996; Ferrara et al., 1996; Shalaby et al., 1995) and the extracellular matrix, undergo specification, proliferation, migration, differentiation and finally coalesce to form the lining of nascent vessels (Lin et al., 2007; Risau and Flamme, 1995). Angiogenesis is the development of blood vessels from an already existing vascular bed (Folkman and Shing, 1992).

In mice, it is believed that blood cells and endothelial cells stem from common precursor cells that are called haemangioblasts. Haemangioblasts are mesodermal cells that are thought to arise in the posterior primitive streak in the early embryo. They represent a subpopulation of Brachyury positive cells, and are positive also for Flk-1 (VEGFR-2) (Eichmann et al., 2002; Lin et al., 2007; Vogeli et al., 2006). The haemangioblasts migrate into both extra-embryonic and intra-embryonic sites. Once they leave the primitive streak, they are committed to become either angioblasts or haematopoietic progenitors. Angioblasts generate vascular endothelial cells, whereas the pluripotent haematopoietic cells produce the various blood cells and lymphocytes. Evidence for the common origin of angioblasts and haematopoietic cells stems from studies of mice that lack *Flk-1*. In such mutant animals, there is a loss of both vascular and haematopoietic cells, suggesting that haemangioblast is a common progenitor for endothelial and haematopoietic cells (Ema and Rossant, 2003). Moreover, it has been shown that Flk-1-positive cells sorted from differentiating embryonic stem (ES) cells can give rise to single-cell-derived blast colonies (BL-CFCs) with ability to produce both endothelial and haematopoietic cells (Choi, 2002; Chung et al., 2002; Coultas et al., 2005b). The haemangioblasts that invade the yolk sac give rise to haematopoietic progenitors and angioblasts. The angioblasts appear to be specified as either venous or arterial already at this stage, but this specification might be dynamic during development. Clusters of angioblasts and haematopoietic cells aggregate to form blood islands, in which the haematopoietic cells become sheathed by endothelial cells. The blood islands then remodel to form the primary plexus (Fig. 2).



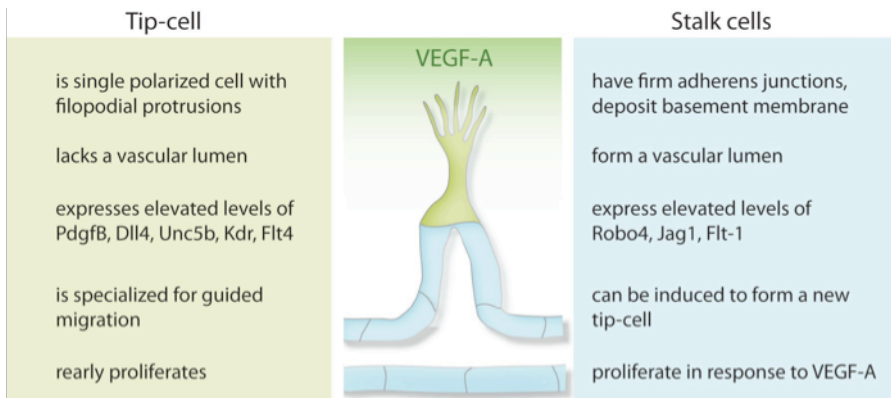
**Fig 2.** *Development of the circulatory system.* Haemangioblasts appear in the posterior primitive streak (top) and move to extra-embryonic sites (left) and intra-embryonic sites (right). Extra-embryonic vessel development: Angioblasts and haematopoietic cells form endothelial-lined blood islands in the yolk sac, which fuse to generate a primary capillary plexus. Intra-embryonic development: Angioblasts migrate and coalesce into cords with a lumen, and form the dorsal aorta and cardinal vein. The primary vessels remodel, together with the extra-embryonic plexus, to form a mature vasculature.

Modified from (Coultas et al., 2005b)

The haemangioblasts that enter the embryo are restricted to the angiogenic fate and migrate to different sites. Some of the angioblasts amass along the anterior/posterior body axis and form the dorsal aorta and cardinal vein. These primitive vessels are formed directly without intermediate steps of blood islands or primary plexus formation. The extra-embryonic plexus and the embryonic primary vessels then remodel and connect to form the mature circulatory system. Mural cells (pericytes and smooth muscle cells) are recruited to vessels by PDGF secreted by endothelial cells. Vascular development then proceeds mainly through angiogenesis.

## Angiogenic sprouts consist of specialized endothelial cells

Angiogenesis, the formation of new vessels from pre-existing vessels, is a process that occurs during both embryogenesis and adult life. The process is essential to prevent or reverse tissue hypoxia (low oxygen) and, consequently, to reverse tissue ischemia. Several types of specialized endothelial cells are required to build a functional vessel branch during the sprouting process (Horowitz and Simons, 2008). The following model has been introduced for the functional specialization of endothelial cells during sprouting angiogenesis: each sprout is headed by an endothelial “tip cell”, which is morphologically and functionally distinct from the endothelial “stalk cells” that follow behind the tip cell and extend the sprout stalk. A key feature of the endothelial tip cells is to be a pathfinder for the growing sprouts. The tip-cells are equipped with numerous filopodia at their leading edge, which participate in the navigation of the growing capillary by probing the environment to perceive the presence of attracting or rejecting signals (Huber et al., 2003). An attracting signal will induce F-actin polymerization and extend filopodia, whereas a rejecting signal will induce de-polymerization and generate retraction. Furthermore, filopodia adhere to form contact points and thereby connect the cell cytoskeleton to the ECM (Defilippi et al., 1999). In this way, the actin/myosin filaments can pull the cell towards these contact points and move the cell forward. The tip-cells do not form a lumen, and proliferate only sparsely (Gerhardt, 2008; Gerhardt and Betsholtz, 2003; Yana et al., 2007). Stalk cells, on the other hand, proliferate, form junctions, produce extracellular matrix, and form a lumen.



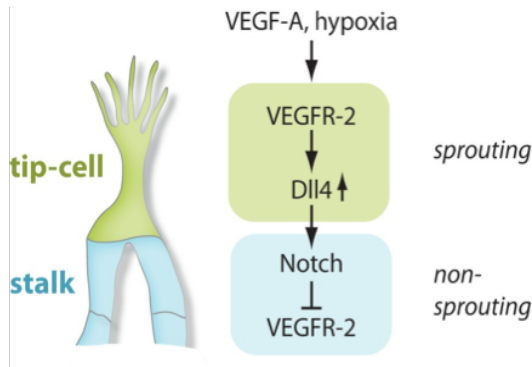
**Fig 3.** Phenotypic and molecular differences between endothelial tip and stalk cells. Tip cell (green), VEGF-A gradient (green), stalk cells (blue).

Modified from (Phng and Gerhardt, 2009).

## Induction of tip cell formation by VEGFR2 and Dll4

Tip-cells have a specific phenotype in association with a characteristic expression of VEGF receptor-2 (VEGFR2), VEGFR3, platelet-derived growth factor (PDGF)-BB, Unc5B, Dll4, neuropilin-1 (NRP1) (Gerhardt et al., 2003; Suchting et al., 2007). The cells detect and react on gradients of angiogenic factors and translate their message into directional migration of the cell. Recent studies have demonstrated that a VEGF gradient is important in the selection and induction of the tip cell (Gerhardt et al., 2003). Binding of VEGF to VEGFR2 induces a signal that randomly appoints one endothelial cell to be the leader and become a tip cell. The neighboring endothelial cells are discouraged from doing so by a specific mechanism called *lateral inhibition* and consequently develop into stalk cells (Fig 4). Endothelial cells express various Notch receptors (Notch1, 3, 4) and ligands (Dll1, Dll4, Jagged1, Jagged2) (Roca and Adams, 2007). Notch is cleaved intra-cellularly to generate the NICD fragment that acts as a transcriptional regulator. Tip-cells are exposed to the highest levels of VEGF, which induces the expression of Dll4 in these cells (Roca and Adams, 2007). Dll4 binds to Notch on neighboring cells and down-regulates VEGFR2 signalling, and this leads to a reduced VEGF-induced

expression of Dll4 in these cells. In this way, the tip-cells strengthen their own position by establishing a self-reinforcing feedback loop that allows the leading cell to gain and retain its tip position, while preventing the neighboring cells from leaving their position in the stalk. Thus, Notch regulates endothelial cell specification by actively suppressing the tip-cell phenotype in stalk cells (Hellstrom et al., 2007).



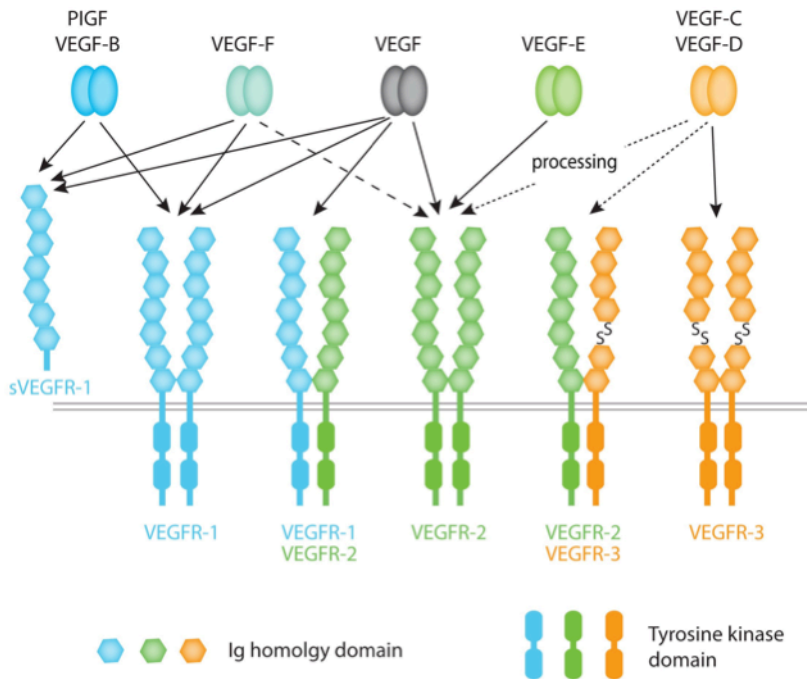
**Fig 4.** *Notch-mediated regulation of endothelial cell specification.* The Dll4/Notch signalling between the tip-cell and stalk cells prevents the latter from becoming tip-cells.

Modified from (Adams and Alitalo, 2007).

### *VEGF/VEGF Receptors*

Vascular endothelial growth factor (VEGF-A) and its receptor VEGFR2/Flk1 are certainly the most discussed and documented ligand/receptor pair involved in angiogenesis. VEGF-A, commonly called VEGF, is the most powerful pro-angiogenic factor known, and studies have shown that VEGF has a crucial role both in vasculogenesis and angiogenesis. VEGF is a member of the PDGF/VEGF growth factor family that includes placenta growth factor (PLGF), VEGF-B, VEGF-C and VEGF-D (Ferrara et al., 2003). There are two other structurally related proteins to VEGFs, VEGF-E that is found in parapoxviruses (Takahashi and Shibuya, 2005) and VEGF-F that is found in snake venoms (Suto et al., 2005). VEGF induces proliferation, sprouting and tube formation of endothelial cells (Carmeliet et al., 1996; Conway et al., 2001; Flamme et al., 1995; Gerhardt et al., 2003; Olsson et al., 2006; Ruhrberg et al., 2002). VEGFs can bind and signal via three different kinase tyrosine receptors,

VEGFR-1/Flt-1, VEGFR-2/KDR/Flk-1, and VEGFR-3. Receptor activation can also be assisted by co-receptors, such as heparan sulfate proteoglycans and neuropilins (Olsson et al., 2006). VEGF-A, -B, -F and PLGF bind to VEGFR1, VEGF-A and -E bind to VEGFR2, and VEGF-C and -D bind to VEGFR3 (Fig 5). Proteolytically cleaved products of the human VEGF-C and -D bind to VEGFR3 and also to VEGFR2, but with lower affinity (Olsson et al., 2006).



**Fig. 5** Interactions of VEGFs and their receptors (VEGFRs). The VEGFs bind their receptors with different specificities (shown with arrows). Binding of dimeric VEGF ligands stimulates receptor dimerisation and leads to receptor auto-phosphorylation that activates downstream signalling events.

Modified from (Lohela et al., 2009)

VEGF-A in mice exists as three (most common) different isoforms that are the products of alternative splicing of the mRNA. The difference in these



isoforms lie in their differential inclusion of exons that encode charged domains that mediate binding to glycosaminoglycans and heparan sulphate components of the extra cellular matrix. The VEGF 188 isoform contains two heparan sulphate-binding sites and is sequestered on the cell surface or in the extra cellular matrix. VEGF 164 has only one heparan sulphate-binding site and has intermediate matrix-binding properties. Interestingly, mice that express only the VEGF 164 form normal vessels, indicating that this is the major form of VEGF that ensures proper vessel formation and patterning (Ruhrberg et al., 2002). The VEGF 120 isoform lacks the heparan sulphate-binding domain and is freely diffusible. Transgenic mice that express only the VEGF 188 isoform develop thin and highly branches vessels, whereas mice that only express VEGF 120 have been shown to develop a vascular phenotype with large vessels and few branches.

The hypoxia that builds up inside a growing tumour induces the formation of new blood vessels from the existing vasculature. This tumourogenic angiogenesis appears to occur in a process similar to that of normal angiogenesis. VEGF secreted from the tumour cells binds VEGFR2 and the co-receptor neuropilin-1 (NRP1) on the endothelial cell membrane of existing vessels and induces vascular leakage, endothelial cell proliferation and migration. A tumour-established VEGF gradient leads the migration of sprouting vessels towards the tumour. Tumour-produced VEGF might also act as an autocrine signal that contributes to tumour invasiveness by promoting the migration and survival of tumour cells themselves (Ferrara et al., 2003; Olsson et al., 2006). Strategies to prevent tumour-associated angiogenesis might therefore inhibit tumour growth. Notably, an anti-VEGF monoclonal antibody (Bevacisumab, Avastin) has been approved by the U.S. Food and Drug Administration for the treatment of metastasizing renal cell carcinomas, breast cancers, non-small cell lung cancers, or previously untreated metastatic colorectal cancers. The treatment with antibodies has been combined with chemotherapy.

### *Tie receptors and angiopoetin ligands*

Four different angiopoetins (Ang1-4) have been identified. Angiopoetins are secreted growth factors, which bind to Tie receptors. There are two different Tie receptors, Tie-1 and Tie-2. All angiopoetins can bind to Tie-2. Angiopoetin 1 and 4 also bind to Tie-1, which was an orphan receptor for a long time (Gaengel et al., 2009; Saharinen et al., 2005). The activities of

Ang-3 and -4 are not well known, but they have been reported to have antagonistic (Ang-3) and agonistic (Ang-4) effects (Valenzuela et al., 1999) on angiogenesis. After the VEGF-VEGFR signalling system, angiopoetin and their tyrosine kinase receptors are the second endothelial-specific signalling system (Augustin et al., 2009; Dumont et al., 1992; Maisonpierre et al., 1993; Partanen et al., 1992; Sato et al., 1993; Thomas and Augustin, 2009). *In vivo* studies have shown that Ang-1 is a main agonistic ligand for the Tie-2 receptor (Klagsbrun and Moses, 1999; Red-Horse et al., 2007; Suri et al., 1996), while Ang-2 acts as an antagonist to Tie2 in most cases (Maisonpierre et al., 1997). The angiopoetin/Tie-signalling system is not required in the early stages of vascular formation, but is essential during the later events, such as vessel remodelling and smooth muscle cell and pericyte recruitment (Augustin et al., 2009; Ferrara, 2009). Tie-2 is expressed in the embryonic endothelium, in the endothelium of quiescent vasculature in the adult (Dumont et al., 1992; Gaengel et al., 2009; Wakui et al., 2006) and in bone marrow-derived monocytes/macrophages (De Palma et al., 2005). Tie-1 is expressed slightly later in the embryonic endothelium and its expression persists during adulthood (Gaengel et al., 2009). Mural cells express Ang-1, which binds to Tie-2 on endothelial cells and improve the interactions between the two cell types. Embryonic Tie-2 knockout mice have reduced number of perivascular cells and develop cardiovascular defect and die *in utero* between day E9.5-E10.5 (Sato et al., 1995). Tie-1 and Ang-1 are also essential for normal vascular development, whereas mice lacking Ang-2 may survive to adulthood.

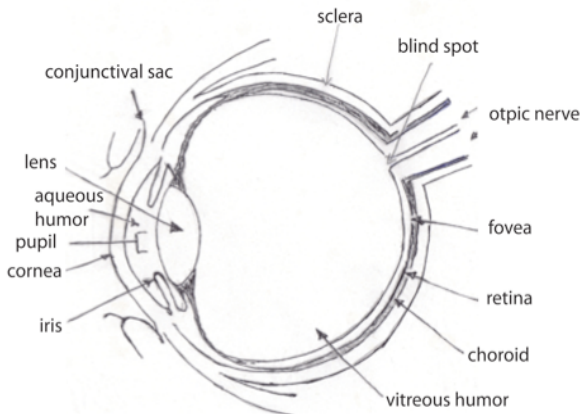
## *Hypoxia*

Tissue hypoxia is a condition with decreased physiological oxygen pressure in a tissue. Mammals have oxygen-sensing mechanisms that help them to handle the situation through adapting quickly to hypoxia. Such adaptation includes increased respiration, blood flow, cell survival responses and, in case of a persistent insufficient supply of oxygen, additional mechanisms to bring back oxygenation and help the body to adapt to hypoxia (Eltzschig and Carmeliet). Hypoxia regulates many transcription factors. One of the most important is the hypoxia-inducible factor (HIF). HIF is a heterodimeric transcription factor that consists of two subunits, HIF-1 $\alpha$  or HIF-2 $\alpha$  and HIF-1 $\beta$  (aryl hydrocarbon receptor nuclear translocator [ARNT] protein). HIF-1 $\alpha$  is ubiquitous, whereas HIF-2 $\alpha$  is restricted to

certain tissues (Eltzschig and Carmeliet). HIF-activation relies on the oxygen-sensing prolyl hydroxylases (PHDs). Under well-oxygenated conditions, PHDs hydroxylate conserved prolyl residues of the HIF- $\alpha$  subunits, thereby generating a binding site for the von Hippel-Lindau tumour suppressor protein, which targets HIF- $\alpha$  for proteosomal degradation. When oxygen levels decrease, the hydroxylase activity of PHDs is reduced, leading to HIF-1 $\alpha$  accumulation. On binding to HIF-1 $\beta$ , the HIF complex translocates to the nucleus and activates transcription of several genes, including VEGF and Ang-2 (Mandriota and Pepper, 1998; Oh et al., 1999).

## Retinal angiogenesis

The vertebrate retina is the light sensitive part of the eye and lines the inner surface of the eye. When light reaches the eye, it passes through the pupil and hits the cornea and lens, where it becomes focused and also inverted before being projected onto the retina at the back of the eye (Fig. 6).



**Fig 6.** A schematic cross section of the eye. The eye is made up of three basic layers: the outer *corneoscleral layer*, the intermediate *uveal layer (uveal tract)* and the inner *retinal layer*.

The retina translates the visual information to a neural signal. The retinal tissue is organized as a multi-layer that consists of cells and cellular processes. Ganglion cells in the retina transmit the neural signal to the

brain, but the actual photoreceptors are the cones and rods. The axons of the ganglion cells form the optic nerve that delivers the information to the brain. Beside the ganglion and photoreceptor cells, there are different integration neurons (bipolar, horizontal and amacrine cells), Müller cells (support cells), astrocytes, microglia and endothelial cells in the retina. The outermost layer of the retina consists of pigmented epithelial cells that form a single layer resting on Bruch's membrane that separates retina from the choroid. The inner limiting membrane (ILM) represents the basement membrane of Müller cells that rest on the vitreous body. Just below the ILM run the axons of retinal ganglion cells (RGC) and the network of astrocytes. The first blood vessel plexus forms in the ILM.

### *Vascular growth in the retina*

The brain is mainly vascularised by angiogenesis of leptomeningeal vessels (Herken et al., 1989; Kurz et al., 2001; Risau and Lemmon, 1988; Marin-Padilla, 1985). Likewise, the deeper networks of the retinal vasculature forms by sprouting angiogenesis (Fruttiger, 2007; Gariano et al., 1994; Gerhardt et al., 2003). There are publications claiming that the primary inner vascular plexus is formed by vasculogenesis from angioblasts that were found in the retina (Ashton, 1970; Chan-Ling et al., 2004; Chan-Ling et al., 1990; Flower et al., 1985; Hughes et al., 2000). However, the existence of such cells is still questionable. Angioblast differentiation is induced by endoderm, and vasculogenesis occurs in tissues containing endoderm. The retina, on the other hand, is a neuroectodermal extension of the diencephalons, the posterior division of the forebrain that connects the cerebral hemispheres with the mesencephalon (Morse and McCann, 1984), and is therefore related, from a developmental perspective, to the brain. Thus, the developing retina appears to lack endoderm needed for induction of vasculogenesis. Nevertheless, it cannot be excluded that endothelial precursor cells might exist in retinal vasculature and are involved in the formation of retinal vasculature (Otani et al., 2002). In general, the development of the retinal vasculature in mice and humans is very similar. The first sprouting vessels enter the retina at the optic nerve head. The vasculature spreads over the inner surface in a radially manner, from the centre of the retina to the periphery, to form a solid network (Fruttiger, 2002; Gariano et al., 1994). The arteries and veins of the retinal vasculature both enter and exit through the optic nerve (Fig 6). Astrocytes migrate into

the retina before the presence of a vasculature (Stone and Dreher, 1987; Watanabe and Raff, 1988). Astrocytes, like endothelial cells, emerge from the optic nerve head (Chan-Ling and Stone, 1991; Connolly et al., 1988; Dorrell et al., 2002; Fruttiger, 2002; Fruttiger, 2007; Gariano et al., 1996; Kopatz and Distler, 2000; Ling et al., 1989; Provis et al., 1997; Schnitzer, 1988; Stalmans et al., 2002; Stone and Dreher, 1987) and spread as a proliferating cell population in a radial manner from the middle point of the retina to the periphery of the tissue. Astrocytes form a network that functions as a scaffold for the growing vasculature. Astrocytes sense the hypoxia in the avascularized retina and express high levels of VEGF before they become covered by blood vessels (West et al., 2005). After one week, when the vascular network has reached the periphery of the retina and covers the whole retina, proliferation of astrocytes terminates and the expression of VEGF becomes down-regulated. After the vascular network has reached the periphery of the retina, the vessels start to sprout downwards into the inner plexiform layer, where they form a second vascular network parallel to the first one (Fruttiger, 2002; Fruttiger, 2007; Gerhardt et al., 2003; Stone et al., 1995). In mice, the primary vessel plexus at the inner retinal layer develops after birth, and the vessels at the growing edge of the vascular network are less mature than the more central vessels (Fruttiger, 2007). It is therefore possible to observe different stages of vascular differentiation in a spatial separation in a single retina (Fruttiger, 2002; Gerhardt, 2008). Thus, the retina is a good model for angiogenic studies.

### *Pathological vessel growth in the retina*

Neovascularization in the adult retina is a major concern. For instance, neovascularization in diseases like diabetic retinopathy or age related macular degeneration leads to blindness. Thus, our understanding of the biological mechanisms that regulate blood vessel growth in the retina has important clinical implications.

### *Oxygen-induced retinopathy (OIR)*

Oxygen-induced retinopathy is a pathological condition that is characterized by the growth of leaky vessels that form tuft-like structures towards the vitreous (Fruttiger, 2007). There is a mouse model for oxygen-

induced retinopathy. The principle for this model is that exposure of mouse pups to high oxygen pressure (hyperoxia) causes degeneration of retinal capillaries, and successive normalization of oxygen levels causes pathological reformation of the retinal vasculature. This mouse model is often used because it shows different stages of pathological neovascularization in the retina, i.e. vessel regression, pathological rebuilding of vessels and tuft formation.

### *Diabetic Retinopathy/Proliferative Retinopathy*

More or less all patient with diabetes suffer from diabetic retinopathy that is a chronic microvascular complication and a side effect of their main illness. Diabetic retinopathy is characterized by gradual progressive changes in the retinal microvasculature, resulting in appearance of nonperfused areas in the retina and, consequently, pathologic intraocular proliferation (Calcutt et al., 2009; Frank, 2004; Gariano and Gardner, 2005). A sign of diabetic retinopathy is acellular capillaries associated with the appearance of microaneurysms that cluster around the areas of acellular capillaries. Animal studies have shown that pericytes disappear before leaving the area without blood flow (Hammes et al., 2004). The areas with non-functional capillaries will experience hypoxia, resulting in neovascularization to attempt to restore the oxygen level. This leads instead to proliferative diabetic retinopathy.

## Microglial cells

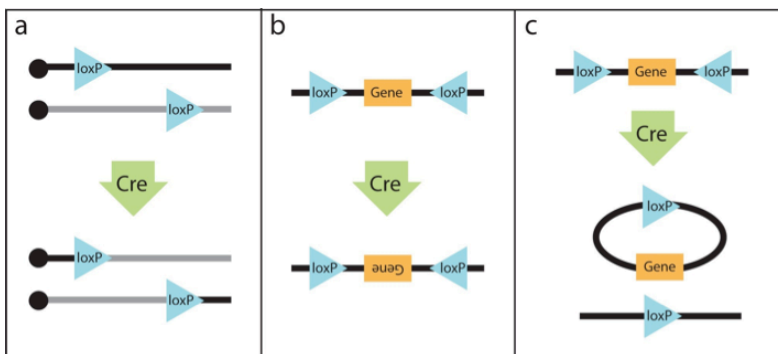
Different types of cells are housed in the brain: cells that belong to the vascular structure, neurons and glial cells. There are two types of glial cells, macroglia (astroglia and oligodendroglia) that are derived from neuroectoderm and microglia. Microglial cells are of mesodermal origin and are found in the brain and the spinal cord. Microglial cells migrate to the central nervous system early during development before the onset of blood vessels, but it is now accepted that they can also be blood derived in the adult under certain pathological conditions. Retinal microglia comprise a heterogeneous population of cells that is believed to be of haemangioblastic mesodermal origin (Streit, 2001). It has been shown that the absence of microglia correlates with the formation of sparser network

formation in the developing retina (Checchin et al., 2006; Rymo et al.).

## Methods

### *The Cre-lox system*

Bacteriophage P1 uses the Cre-lox system to insert its own DNA into the genome of the host bacteria, so that it in this way becomes replicated. Cre recombinase is a phage enzyme that catalyzes the recombination between two loxP sequences. Cre can recombine its DNA with that of the host at specific loxP sequences (Hoess and Abremski, 1985). The Cre-lox system has been widely used in genetic manipulation in mice, in yeasts and also in plants, by using different promoters that control the expression of the Cre enzyme (Araki et al., 1997). The lox sequence consists of two 13 bp inverted sequences that flank the core sequence. The location and direction of the flanking loxP sequences decide the result of the recombination, which can be a chromosomal translocation (Fig 7a) an inversion (Fig 7b) or a deletion (Fig 7c).



**Fig 7.** Localisation and direction of the loxP sequence decide the outcome of the Cre-lox recombination.

The *Cre* gene and the loxP sequences do not naturally exist in the mouse genome, but can be introduced by transgenic technology. The Cre and loxP-flanked strains are generated separately, and the mouse carrying the

Cre recombinase will be crossed with a mouse carrying the loxP construct to produce a Cre-lox strain. In order to generate a total or conditional knockout mouse with the Cre-lox system, Cre is placed under the control of a general or cell specific (conditional) promoter. In addition, modified Cre transgenes have been generated, which produce a dysfunctional Cre that needs an inducer, e.g. tamoxifen, to become active. This modification gives the opportunity to knockout genes at any wanted time point by administration of the inducer. Floxed strains are generated by flanking the gene of interest, or a critical part of it, by loxP sites. Well-used Cre reporter strains have loxP sites in combination with a marker, for example a visible fluorescent marker that gives the opportunity to trace Cre recombination status and also obtain information about the Cre recombination efficiency. Today, there are many different Cre-lox strains commercially available.

### *Mouse ex vivo aortic ring in 3-D culture system*

More than a quarter century ago, Nicosia and Leighton cultured aortic rings from rat and reported the capacity of aortic rings in 3-D cultures to generate vessels *in vitro* (Nicosia *et al.*, 1982). Since then the model has been modified and used in many angiogenic studies, because it provides opportunity to investigate different steps of the angiogenic process from induction of endothelial sprouting to the recruitment of pericytes and regression of the vessels.

In our study the rat aortic ring culture system described by Nicosia (Nicosia and Ottinetti, 1990) is adapted to the mouse. This assay reproduces several aspects of angiogenesis *in vivo*, with the important difference that it disconnects the angiogenic sprouting process from potential systemic confounding factors such as blood flow, blood pressure and haemostatic regulation (Nicosia and Ottinetti, 1990) which is needed in some studies. Mouse aortic rings cultures mostly have collagen gels as the matrix and are supplemented with serum, but not with additional growth factors.



## AIMS OF THIS STUDY

The main aim of the present thesis is to adapt and use the aortic ring system in the mouse to investigate regulatory factors of angiogenesis. Specifically, the system was used to study the role of microglial cells (papers I and II) and S1P<sub>1</sub> (paper III) on angiogenesis.

Another aim was to study the effect of endothelial-specific ablation of PDGFB, using Tie2-Cre mice. However, Tie2-Cre was found not to be endothelial-specific, and in paper IV it was used to mark transplanted bone marrow-derived cells to study their effect on insulin-producing  $\beta$ -cells.

# A two-way communication between microglial cells and angiogenic sprouts regulates angiogenesis in aortic ring cultures (Paper I)

## Background

The retina is an organ, in which too many or too few vessels are associated with pathology. Microglia are a type of glial cell found in the central nervous system, but they are not functionally connected via gap junctions. Microglia comprise a heterogeneous population of cells that share phenotypic characteristics and lineage properties with bone marrow-derived monocytes/macrophages, and are thus considered to be specialized local immuno-competent cells. However, recent work has unveiled a potential role for microglia also in retinal blood vessel formation. Retinal microglia populations are recruited at different developmental time points. The first population of microglial cells migrate to the central nervous system (CNS) and the mouse retina before the onset of blood vessel formation. Microglia can also invade the retina after it is vascularised, often in response to inflammation. The role of the microglia present in the early retina before vascularisation is obscure. During the first postnatal week of development, the microglia are distributed as singular cells in a regular density at the retinal surface, and ahead of the growing vascular plexus. These resident microglia are restricted to the *inner retinal region*, in close proximity to vascular sprouts and become intimately associated with the growing vasculature. When the resident microglia and systemic macrophages were depleted in neonatal rats, a pronounced decrease in retinal vascular area and density was observed. This phenotype was rescued by intravitreal injection of microglia, indicating an important role for microglia in normal retinal blood vessel formation (Checchin et al., 2006). In paper I we investigated this possible effect of microglia on angiogenesis.

## Results and Discussion

### *Absence of microglia correlates with the formation of a sparser network of vessels in the developing retina*

We used two different transgenic mice models to investigate whether microglial cells affect blood vessels formation and fusion during early postnatal retinal development. One was Macrophage colony stimulating factor/colony stimulating factor-1 (M-CSF/CSF-1) animals that lack CSF-1 protein and, as a consequence, lack or have fewer microglial cells in the retina (Kubota et al., 2009). The M-CSF/CSF-1 knockout mice developed a significantly sparser vessel network compared to control animals. The other model was PU.1 knockout mice that lack monocyte/macrophage cells, including the monocyte-derived retinal microglia (Fantin et al., 2010). PU.1 knockout mice also developed a sparser retinal vessel network than the controls (this paper).

### *Microglial cells associate with vessel sprout anastomoses during developmental angiogenesis in the mouse retina*

Our experiments, using co-staining of microglia and endothelial cells, showed that microglial cells are commonly associated with endothelial tip-cells at sites where two tip-cells are contacting each other through filopodia. These are the sites of the future sprout anastomosis. In addition, our *in vivo* observations established a correlation between the presence of microglia and the formation of vessel anastomoses and secondary angiogenic sprouting in the developing mouse retina.

At this stage, we realized that it would be a great advantage to use an *in vitro* angiogenic model system that would allow us to perform analyses that were not doable in the *in vivo* system. Initially, we aimed to establish an *in vitro* retinal organ culture system, but due to technical difficulties we could not obtain analytical reproducibility. We were more successful in adapting the rat aortic ring culture system to the mouse. Combination of the aortic ring culture system with live microscopy studies turned out to be a good model to study angiogenesis. This model gave us the opportunity to investigate the influence of microglial cells on angiogenesis in a step-by-step manner, from the beginning of the sprouting process to fusion of the

branches, network formation and maturation of the vessels by recruitment of pericytes.

### *Microglia stimulate vessel sprouting and branching in vitro*

To test the ability of microglial cells to induce vessel branching during angiogenesis, microglial cells were deposited locally into the 3-D gel that supports the aortic rings. In the presence of microglia, the aortic rings began to sprout earlier compared to cultures without added microglia. Microscopy on a daily basis demonstrated formation of a denser vessel network, and also longer branches, in cultures with microglial cells as compared to the controls. By counting the number of branches and fusions points and the length of the vessels each day for one week, we could show that there was a steady increase in branch number and branch length with time. Statistical analysis of the response peaks showed that vessel branch number peak was considerably higher in the presence than in the absence of microglia ( $p \leq 0.0001$ ). The difference in response in terms of peak branch length was not statistically significant. Together, our results suggest that microglial cells have a stimulatory effect on angiogenic sprout formation, branching and fusion in the *in vitro* mouse aortic ring model system.

### *Angiogenic effect of microglia in the aortic ring system is cell type-specific*

We next asked whether the angiogenic effect of microglia in the aortic ring model was cell type-specific or could be mimicked by other mesenchymal cells. We therefore compared the effect of microglial cells on branching of aortic ring vessels with that of mouse embryonic fibroblasts (MEF). Statistical analysis showed that microglia induced a 5-10 fold increase in branch number. In contrast, the addition of MEF did not cause an increase in the number of branches. In fact, addition of MEF cells to the cultures caused a decreased branch number in comparison to aortic ring cultures with no cells added. The results support the notion that the stimulatory effect of microglia on vessel branching is specific for this cell type.

*Direct cell-to-cell contact is not essential for the angiogenic stimulatory effect of microglial cells*

In our aortic ring cultures, the applied microglial cells spread from their site of injection and finally infiltrated the endothelial network. An important question was therefore whether microglia stimulate vessel branching directly through physical contacts with the vascular network, or indirectly via soluble factors, or both. By mixing microglial cells with collagen prior to their injection into the gel of the aorta ring culture, we could immobilize the cells to a high degree and study their effects on aortic ring cultures before they made physical contact with the growing vessels. When comparing aortic rings cultured with or without such immobilized microglia, it was obvious that microglia induced sprouting long before the cells made physical contact with the growing vessel network. The analysis also showed that the angiogenic effect of microglial cells on vessel branching is dose-dependent. From these experiments we conclude that microglial cells release a soluble factor(s) that stimulates sprouting from the aortic rings.

*Aortic ring explants induce secretion of stimulatory angiogenic factors from microglial cells and directed migration of the cells towards the explants*

We consistently observed that microglia exhibited directed migration towards the aortic rings, even when the cells were retarded by suspension in collagen gel before injection. Parallel aorta ring cultures, in which MEFs replaced the microglia, showed a strikingly different pattern of cell migration. In contrast to the oriented migration exhibited by microglia, the MEFs spread radially from the site of injection. Moreover, when they came close to the aorta rings, they changed their direction of migration and turned away from the vessels. Random migration is a common feature of many cell types. Microglia, in the absence of an aortic ring, also show a random migration pattern. This supports the notion that the induction of directed migration of microglial cells towards the aortic ring explant is cell-type specific.

To address the question whether the aortic rings not only induced an oriented migration of microglial cells, but also influenced the release of

angiogenesis stimulatory factor(s) from the microglial cells, we compared the angiogenic effect of conditioned medium from separately cultured microglia with the angiogenic effect caused by the co-culture of microglia with aortic rings. In this setting, we also cultured aortic rings with only culture medium as control. We found large differences in the number of vessel sprouting in cultures with embedded microglial cells compared to cultures supplemented with conditioned medium collected from cultured microglial cells. Furthermore, there was a significant increase in vessel sprouting in aortic ring cultures that were supplemented with conditioned medium from cultured microglia cells compared to those that were cultured with control medium.

Taken together, the results suggest that the aortic ring induces oriented microglial migration. Moreover, microglia inherently secrete angiogenic factor(s), and this secretion appears to be stimulated by co-culture with aortic rings.

#### *The microglia-derived angiogenic factor(s) is distinct from VEGF-A*

The most pivotal regulator of blood vessel formation *in vivo* is VEGF-A, which is produced by many cell types, including myeloid cells. Therefore, VEGF-A became our first candidate to test as a mediator of the microglial cell effect on angiogenesis.

We added VEGF-A plus or minus a soluble chimeric VEGF receptor (VEGFR-1) that acts as an extracellular trap for VEGF-A, VEGF-B and PlGF, to aortic ring cultures. Addition of VEGF-A induced formation of vessels in a dose-dependent manner. VEGF-induced cultures showed a thick and solid vessel phenotype, which was different from the thin and branched vessels obtained in cultures in the presence of microglia. The effect of VEGF-A was inhibited by the simultaneous addition of the inhibitor (soluble VEGFR-1). The addition of the inhibitor alone to cultures with microglia had no effect on vessel phenotype. These results suggest that the angiogenic factor(s) released from microglial cells is distinct from VEGF-A, VEGF-B and PlGF. Our findings are consistent with previous reports showing that microglial cells in the developing mouse CNS do not express detectable levels of VEGF-A mRNA (Gerhardt et al., 2003).

The results from this study indicate that microglia have a direct positive effect on angiogenesis. Moreover, this effect appears to rely on soluble

factor(s) other than VEGF-A. The observation that microglia exhibit oriented migration towards the aortic ring further suggests that there is a two-way communication between microglia and the explant. The latter might contribute to the observed proximity of microglia and vascular sprouts *in vivo*.

## Conclusions

- Microglial cells associate with vessels sprout anastomoses during developmental angiogenesis in the mouse retina.
- Absence of microglia correlates with the formation of a sparser network of vessels in the developing retina.
- Microglia stimulate vessel sprouting and branching in aortic cultures *in vitro*.
- The angiogenic effect of microglia does not depend on direct cell-to-cell contact.
- Aortic ring explants stimulate the angiogenic effect of microglia, and induces directed migration of microglia towards to explants.
- The microglia-derived angiogenic factor(s) is distinct from VEGF-A.

# Identification of microglia-derived candidate regulatory factors with putative role in vessel formation by transcriptional profiling of microglia (Paper II)

## Background

Microglia, a macrophage-related cell type in the central nervous system (CNS), is known to stimulate developmental and pathological angiogenesis. The nature of the angiogenic effect of microglia is unclear and appears different from vascular endothelial growth factor (VEGF-A). Addition of microglial cells to the aortic ring system is sufficient to stimulate vessel sprouting and has indicated that the angiogenic effect depends on secreted components. Moreover, the sprouting aortic ring induces oriented migration of microglia towards the explant. In paper II, we analysed the microglia transcriptome to identify potential secreted components that might mediate their pro-angiogenic effect.

## Results and Discussion

### *Microarray analyses*

In order to further elucidate the pro-angiogenic effect of microglia, the transcriptomes of microglial cells and MEF were compared. Messenger RNA from each cell line (microglia versus MEF) was subjected to transcription profiling using Affymetrix 1.0 microarrays. The array hybridization and initial processing of the data were performed in collaboration with the core facility for Bioinformatics and Expression analysis at the Department of biosciences and nutrition at Novum, Karolinska Institute, Stockholm, Sweden. Statistical processing of the data sets to detect differentially expressed genes, revealed 2578 genes that were up-regulated in microglial cells compared to MEFs (fold-change  $\geq 2$ ). Conversely, 2222 genes were found to be down-regulated (fold-change  $\geq 2$ ).



### *Microglia express genes associated with developmental process*

The functional properties of the various up- and down-regulated gene products in microglial cells according to their representation in biological pathways were categorized using the Ingenuity Systems Pathway (IPA) database. The top functions in Physiology and System Development found for genes that were up-regulated in microglia included *tissue and organ development*. Down-regulated genes, on the other hand, contributed mainly to *hematological system development*. These differences in gene expression became even more evident by analyzing the top functions according to Diseases and Disorders. Genes up-regulated in microglia are associated mainly with *cancer, genetic disorders* and *developmental disorders*, while the down-regulated genes primarily relate to *immunological diseases*.

### *Microglia express potential angiogenic factors*

Since microglia can stimulate angiogenesis in the absence of direct contact with the sprouting vessels, the pro-angiogenic effect of microglia is expected to rely on a secreted extracellular signal protein(s). Among the up-regulated genes in microglia, 220 were predicted to encode secreted proteins. Gene ontology clustering showed that the secreted proteins also exhibited high enrichment scores for *developmental processes* and *biological adhesion*, and that the most highly enriched molecular function was *binding*. Twelve of the extracellular genes were annotated as being involved in *angiogenesis*. They showed a fold-change ranging from 2 to 70. VEGF-A was included in the list, but with a moderate 5-fold up-regulation. Thus, microglial cells express a number of plausible candidate factors that might underlie the stimulatory effect of microglia on angiogenesis.

### *Stimulation of microglia by aortic ring explant*

We previously noticed that microglial cells stimulate vessel sprouting in the aortic ring culture system to a greater extent than microglia-conditioned medium (Rymo et al., 2011). This might reflect a specific up-regulation of expression and release of pro-angiogenic factors from the microglia in response to the aortic ring. To address this question, two sets of aortic ring

cultures were set up, one with and one without an aortic ring explant, and microglial cells were added to all cultures. After incubation for 5 days, the microglia-containing part of the gel was excised and RNA was extracted. The transcription profile of microglia co-cultured with aortic rings compared to microglia grown in the absence of aortic rings revealed 33 genes with a fold-change  $\geq 1.3$ . Gene ontology clustering according to biological processes revealed highest enrichment score for *response to stimulus*, while clustering according to *cellular component* produced the highest score for *extracellular gene products*.

Cluster analysis according to *molecular function* revealed high scores for *binding* and *chemorepellant activity*. The Ingenuity System Pathway (IPA) indicated that the network with the highest ranking was *infection mechanisms, infection disease, inflammatory disease*. Sixteen of the 33 up-regulated genes were, according to IPA, grouped under *inflammatory response*. The transcriptome analysis provided evidence that microglial cells become activated when cultured together with the aortic ring.

Microglia have a high functional plasticity. For example, while the activity of microglia in immunological disease stages is in line with a pathological role as macrophages, recent studies have indicated that microglia have important functions in promoting neurogenesis and angiogenesis in non-pathological situations. Our results showed that microglia in culture express a large number of known pro-angiogenic factors, as well as other secreted factors involved in organ development. Our results thereby provide a platform for further investigation of microglia-derived factors that mediate the stimulatory effect of these cells on angiogenesis *in vivo*. Together, our findings support the view that microglia have important functions in development processes, and demonstrate that this cell type secretes a number of pro-angiogenic factors that might explain their stimulatory role in angiogenesis.

## Conclusions

- Analysis of the microglial transcriptome revealed that microglia in culture shows prominent expression of genes associated with *developmental process* and *biological adhesion*.
- Among these genes are known activators and inhibitors of angiogenesis that might have a role in retinal blood vessel development.
- Microglia co-cultured with aortic rings appear to switch on moderate expression of inflammatory response genes.

# S1P<sub>1</sub> is a critical regulator of angiogenesis (Paper III)

## Background

The bioactive lipid sphingosine-1-phosphate (S1P) has many functions in development and adult physiology. In mammals, two different kinases (SphK1 and SphK2) produce S1P from sphingosine (Kohama et al., 1998). A specific sphingosine phosphatase de-phosphorylates S1P back into sphingosine (Mandala et al., 1998), and an S1P-specific lyase catalyzes S1P degradation (van Veldhoven and Mannaerts, 1993; Zhou and Saba, 1998).

S1P has an important role during vascular maturation and is critical for vascular integrity (Allende and Proia, 2002; Hla, 2003). Platelets and other hematopoietic cells are major sources of S1P (Yang et al., 1999), leading to high concentrations of S1P in plasma and serum (Yatomi et al., 1997; Yatomi et al., 2001), while interstitial concentrations are low. Platelets lack S1P lyase, and are therefore unable to degrade S1P. Once activated, platelets release high amounts of S1P to serum (Yatomi et al., 1997). S1P binds to and activates a family of G protein-coupled receptors, called sphingosine phosphate receptor 1 to 5 (S1P<sub>1</sub> to S1P<sub>5</sub>), formerly known as endothelial differentiation gene (Edg) receptors (Hla et al., 1999). Endothelial cells express S1P<sub>1</sub>, S1P<sub>2</sub> and S1P<sub>3</sub> (Kono et al., 2004).

Complete S1P depletion through genetic ablation of both SphKs in mice results in severe neurological and vascular defects (Mizugishi et al., 2005). SphK1/2 double knockout embryos die between embryonic days (E) 11.5 and 13.5 and display widespread haemorrhages. The defects of these mice involve an abnormally developed vasculature, including vessel dilation and oedema. In paper III, we re-analysed the vascular phenotype of S1P<sub>1</sub><sup>-/-</sup> mice.

## Results and Discussion

### *SIP<sub>1</sub><sup>-/-</sup> mice display endothelial hypersprouting*

Most SIP<sub>1</sub><sup>-/-</sup> embryos appear grossly normal around E11.5 but develop severe internal bleeding and oedema around E12.5. This phenotype progressively worsens until death, which usually occurs around E14. It has previously been reported that SIP<sub>1</sub><sup>-/-</sup> show defects in pericyte recruitment (Liu et al., 2000). We analyzed SIP<sub>1</sub><sup>-/-</sup> embryos ranging from ages that preceded the internal bleedings (E11.5) until shortly before death and failed to observe any delay in pericyte recruitment at any stage analyzed. We were also unable to detect reduced pericyte coverage in these embryos, but small pericyte detachment was observed at late stages, when the animals were close to death. On the other hand, we noticed that the vasculature in SIP<sub>1</sub><sup>-/-</sup> embryos was hypersprouting, as endothelial cells extended an increased number of filopodia. In addition, vessels often appeared dilated and abnormal in shape, and the vascular plexus was denser than in control animals.

### *Pharmacological modulation of SIP<sub>1</sub> signalling regulates angiogenesis*

We used the selective SIP<sub>1</sub> agonist SEW2871, and the SIP<sub>1</sub> inhibitor W146 (Rosen et al., 2009; Sanna et al., 2004; Sanna et al., 2006) to examine the mechanism by which SIP<sub>1</sub> inactivation leads to endothelial hypersprouting and hyperplasia. Based on the phenotype of SIP<sub>1</sub><sup>-/-</sup> embryos, we expected that pharmacological inactivation of SIP<sub>1</sub> would create endothelial hypersprouting, whereas activation might produce opposite effects. We started by testing the biological activity of both compounds in a reliable and reproducible assay, the aortic ring sprouting assay (Nicosia and Ottinetti, 1990; Rymo et al., 2011; Zhu et al., 2003). The effects of pro- or anti-angiogenic factors have previously been successfully established using the aortic ring assay (Kruger et al., 2001). We treated aortic rings with either the SIP<sub>1</sub> agonist (SEW2871) or the antagonist (W146). As predicted from our *in vivo* data, pharmacological inhibition of SIP<sub>1</sub> caused hypersprouting from the aortic explants. Sprouts were increased in number and formed a dense network, but they appeared thin and discontinuous. In some instances, the leading cells of the sprouts had detached from the

sprout. In contrast, activation of S1P<sub>1</sub> signalling by addition of the agonist produced reduced network density and number of sprouts. The sprouts that formed were thicker, longer, continuous and more uniform than those in the control culture, and cells that had lost contact from the sprout were rarely observed.

To test if the S1P<sub>1</sub> agonist and antagonist were able to modulate angiogenesis *in vivo*, we analysed their effect on retinal angiogenesis. The S1P<sub>1</sub> activator, inhibitor, or vehicle only, was injected into mouse pups between P3-P5, and their retinas were analysed at P5. We found that the antagonist-treated animals displayed an overall denser retinal vasculature, and an increase in endothelial filopodia and tip cell number. The agonist-treated animals displayed a reduced vascular density in many areas of the retina. Thus, both genetic and pharmacological inactivation of S1P<sub>1</sub> causes endothelial hypersprouting and endothelial hyperplasia, whereas activation of S1P<sub>1</sub> negatively regulates endothelial sprouting.

### *Endothelial hyperplasia and disintegration of the aorta in S1P<sub>1</sub><sup>-/-</sup> mice*

Embryos that lack S1P<sub>1</sub> were stained with various endothelial cell markers, which revealed a remarkable endothelial cell hyperplasia in the aorta. The endothelial hyperplasia seemed to arise around E11.5, and suggests that vasculogenesis initiates and proceeds normally in S1P<sub>1</sub><sup>-/-</sup> embryos. At this point however, endothelial cells started to lose contact with the aortic wall and formed aberrant branches that led into adjacent lumenized vessel aggregates of highly abnormal morphology. This “disintegration” of the aorta is likely to cause the severe internal bleedings and death of S1P<sub>1</sub><sup>-/-</sup> embryos. In addition, the vasculature in S1P<sub>1</sub><sup>-/-</sup> embryos showed increasing amounts of collagen IV and fibronectin, indicating an excessive extracellular matrix production by the hyperplastic endothelium. Despite the endothelial hyperplasia, pericytes were associated with the ectopic vessel networks. The small pericyte detachment observed at later stages seemed to be caused by proliferation of endothelial cells, which physically displace and disrupt the vSMCs coat. We propose that this disruption happens after the aorta is completely covered by vSMC, and that the disruption itself is a consequence of the hyperplastic endothelial cells expansion, occurring initially on the dorsal side of the aorta.

### *S1P<sub>1</sub> is required in endothelial cells to control vascular sprouting and tip cell formation*

S1P<sub>1</sub> has been reported to be expressed in the developing vasculature, the forebrain and the heart between E9.5 and E13.5 (Liu et al., 2000). Thus, it is possible that the vascular defects in S1P<sub>1</sub><sup>-/-</sup> embryos could be a secondary consequence of cardiac dysfunction and subsequent circulation defects. To answer this question, we inactivated S1P<sub>1</sub> function after birth, and analysed the developing mouse retina. Using the S1P<sub>1</sub> lacZ reporter (Liu et al., 2000), we found that S1P<sub>1</sub> seems to be expressed exclusively by the endothelium in the developing retina. Selective ablation of S1P<sub>1</sub> in the retinal endothelium resulted in vascular hypersprouting with an increased number of filopodia and tip cells. Thus, it seems that S1P<sub>1</sub> is required cell-autonomously in endothelial cells to suppress their sprouting.

### *S1P inhibits VEGFR-2 phosphorylation and AKT activation*

Two defects in S1P<sub>1</sub><sup>-/-</sup> embryos suggested that S1P<sub>1</sub> could interfere with VEGF-A signalling: First, the ectopic branching from the aortic wall initially appeared at the dorsal side, suggesting that the dorsal cells responds to a signal that initially is not present on the ventral side, such as VEGF-A (Coultas et al., 2005a). Second, the hypersprouting phenotype has previously been reported in cases where VEGF-A is over-expressed or aberrantly distributed (Gerhardt et al., 2003). To address if the S1P<sub>1</sub><sup>-/-</sup> phenotype is related to VEGF-A signalling, we used a spheroid bead-sprouting assay using human umbilical vein endothelial (HUVEC) cells. Addition of VEGF-A to the medium caused an increase in tip cell formation. Addition of S1P activator caused a marked reduction in VEGF-induced tip cell number, whereas S1P<sub>1</sub> inhibition enhanced tip cell formation. S1P<sub>1</sub> inhibition also caused an increase in detached cells from the extending sprouts. Thus, in this assay, activation of S1P<sub>1</sub> signalling counteracts VEGF-A-induced endothelial sprouting and tip cell formation. We next asked if S1P could affect the activation of VEGFR-2. Thus, primary human brain microvascular endothelial cells (HBMEC) were treated with S1P prior to stimulation with VEGF-A. This resulted in reduced VEGFR-2-phosphorylation, suggesting that S1P<sub>1</sub> counteracts VEGF-A signalling at the receptor level. Moreover, such pre-treated cells also displayed reduced phosphorylation of the downstream effector AKT.

In summary, we provide evidence that S1P via S1P<sub>1</sub> is a critical negative regulator of angiogenic sprouting in the developing mouse embryo. Based on the results, we propose that S1P, via its receptor S1P<sub>1</sub>, negatively regulates VEGF-A/VEGFR-2 signalling. The developing vascular network might therefore be stabilized through the blood-borne factor S1P, which would be achieved by the inhibition of angiogenic responses in stalk cells. The stalk cells of sprouting vessels form a lumen that is in contact with blood (and hence exposed to S1P), while the tip cells do not contact the lumen and therefore would be less exposed to S1P. The suppression of tip cell characteristics by S1P, through S1P<sub>1</sub>-mediated negative regulation of VEGFR-2, suggests that S1P/S1P<sub>1</sub> signalling might be fundamental to prevent stalk cells from responding to VEGF-A and form new tip-cells.

## Conclusions

- S1P<sub>1</sub>-deficient mice display endothelial hypersprouting.
- S1P<sub>1</sub> is required within endothelial cells to control vascular sprouting and tip cell formation.
- Pharmacological modulation of S1P<sub>1</sub>-signalling regulates angiogenesis *in vitro* and *in vivo*.
- S1P<sub>1</sub> counteracts VEGF-A induced sprouting.
- S1P<sub>1</sub> can inhibit VEGFR2 and Akt phosphorylation.



# Bone marrow transplantation stimulates pancreatic $\beta$ -cell replication after tissue damage (Paper IV)

## Background

Type I diabetes is a non-curable metabolic disease caused by autoimmune destruction of the insulin-producing  $\beta$ -cells in the pancreas. Attempts to establish reproducible methods for stable therapeutic  $\beta$ -cell reconstitution have so far been unsuccessful. Although transplantation of  $\beta$ -cell islets have yielded promising results, the long-term outcome is poor, and extensive use of the method is difficult due to by the shortage of donor islets (Shapiro et al., 2006). An alternative source of  $\beta$ -cells is the trans-differentiation of adult stem cells, but the low frequency of such differentiation events has so far prevented a wider use of this method (Gubbins et al., 2006; Schroeder et al., 2006). Another strategy is to use the endogenous sources of  $\beta$ -cells that already exist in the adult patient. New  $\beta$ -cells are formed throughout the life to compensate for apoptotic loss.  $\beta$ -cells have been shown to regenerate to some degree following  $\beta$ -cell destruction by partial pancreatectomi or streptozotocin (STZ) treatment (Bonner-Weir et al., 1993; Guz et al., 2001). However, the mechanisms for adult  $\beta$ -cell neoformation remain elusive. A number of studies claim that pancreatic progenitor cells can give rise to  $\beta$ -cell neogenesis *in vivo* and *in vitro* (Bonner-Weir et al., 1993; Bonner-Weir et al., 2000; Guz et al., 2001; Lardon et al., 2004; Zulewski et al., 2001). By contrast, recent reports suggest that  $\beta$ -cells in adult mice can be renewed by duplication of pre-existing  $\beta$ -cells (Dor et al., 2004; Nir et al., 2007). Additional studies claim that bone marrow cells can transdifferentiate to pancreatic  $\beta$ -cells after bone marrow transplantation (BMT) (Ianus et al., 2003). Finally, it has been proposed that bone marrow cells can adopt an endothelial cell fate and enhance tissue regeneration through neo-vascularisation (Hess et al., 2003). In paper IV, the capacity of transplanted bone marrow cells to engraft into the pancreas, to adopt an endothelial cell phenotype and to stimulate  $\beta$ -cell regeneration after islet damage, was investigated.

## Results and Discussion

### *Characterization of Tie2-Cre/ZEG mice*

The Tie2-Cre/ZEG transgenic mouse strain was generated by crossing Tie2-Cre mice (Kisanuki et al., 2001) with ZEG mice, where the *GFP* (green fluorescent protein) gene is preceded by floxed translation stop codons (Novak et al., 2000). Thus, cells that activate the Tie2 promoter will express Cre recombinase, resulting in removal of the translation stop signals and permanent GFP expression. FACS analysis of bone marrow cells in Tie2-Cre/ZEG mice showed that 70% of the cells were GFP<sup>+</sup>. Of these, 97% expressed CD45 (a panhematopoietic marker) and 37% colocalized with expression of PECAM-1, an antigen shared by both endothelial and hematopoietic cells. The vast majority of PECAM-1<sup>+</sup> cells expressed CD45, demonstrating their hematopoietic origin. Only 3% of the GFP<sup>+</sup> bone marrow cells were PECAM-1<sup>+</sup> CD45<sup>-</sup>, suggestive of an endothelial phenotype. These cells may represent mature endothelial cells from contaminated blood vessels in the bone marrow extract, or endothelial progenitor cells, as previously suggested (Rafii and Lyden, 2003).

When blood vessels were examined for the expression of the endothelial antigen von Willebrand's factor (vWf), numerous GFP<sup>+</sup> cells were found to be located outside the vessels, scattered as rounded single cells in the parenchyma. These cells were CD45<sup>+</sup>vWf<sup>-</sup>, suggesting a hematopoietic cell fate. Thus, Tie2 is also present on blood cells, supporting previous data (De Palma et al., 2005; Yano et al., 1997), and questioning the validity of Tie2 as a specific marker for endothelium. Therefore, in this study, the GFP<sup>+</sup>/vWf<sup>-</sup>/CD45<sup>-</sup> phenotype in combination with morphological assessment was used as a criterion for transplant-derived endothelium.

### *Bone marrow transplantation lowers hyperglycemia*

It is well established that BMT normalizes hyperglycemia after  $\beta$ -cell damage. To investigate this ability in hyperglycemic mice,  $\beta$ -cell damage was induced by intra-peritoneal injection of streptozotocin (STZ), and the mice then received intravenous injection of unfractionated bone marrow cells from Tie2-Cre/ZEG. At 4 weeks post-transplantation, recipient mice were sacrificed and examined for donor reconstitution and blood glucose.

FACS analysis revealed that 90% of peripheral blood cells in the recipient mice were donor-derived cells, as they expressed GFP. In non-transplanted control mice treated with low dose STZ, blood glucose remained slightly elevated, and mice treated with intermediate and high doses remained hyperglycemic. In bone-marrow transplanted mice, a reduction of blood-glucose concentration was observed in a dose-dependent manner with increasing levels of STZ treatment. The data demonstrated that bone-marrow transplantation improves hyperglycemia, but cannot cause full normalization.

### *Pancreatic engraftment of bone marrow-derived GFP<sup>+</sup> cells*

The ability of bone marrow engrafted cells to give rise to pancreatic  $\beta$ -cells was investigated four weeks after transplantation. No engrafted GFP<sup>+</sup> cells that expressed insulin was found. Although plenty of engrafted donor-derived GFP<sup>+</sup> cells were observed in pancreatic sections, 99% of these cells were CD45<sup>+</sup>. Moreover, only 2-5% of the engrafted GFP<sup>+</sup> cells co-expressed the endothelial antigen vWf. The vWf<sup>+</sup>/GFP<sup>+</sup> cells were found mainly in conjunction with vessel structures, but almost all expressed CD45, suggesting a haematopoietic rather than an endothelial differentiation fate.

### *B-cell proliferation is stimulated by BMT*

The insulin-positive islet area was drastically reduced following STZ treatment, both in transplanted and non-transplanted mice. However, bone marrow transplantation appeared to have beneficial effects on islet size. To examine whether the increased insulin-positive islet area arose from enhanced  $\beta$ -cell proliferation, BrdU was administered before sacrificing the mice. BrdU incorporation increased substantially in BMT-treated mice receiving STZ compared to normoglycemic transplanted mice. The analyses indicated that  $\beta$ -cell proliferation is related to the degree of islet damage and can be stimulated by the transplantation procedure.

### *BMT promotes endogenous angiogenesis after tissue damage*

The number of recipient endothelial cells (GFP<sup>-</sup>/vWf<sup>+</sup>) in the pancreas parenchyma was examined. In transplanted mice, GFP<sup>-</sup>/vWf<sup>+</sup> cell numbers increased by 20% after STZ treatment. In addition, a 50% enhancement in endothelial cell proliferation was demonstrated by vWf<sup>+</sup>/BrdU<sup>+</sup> co-staining. In contrast, in the non-transplanted group there was no change in the number of endothelial cells in STZ-treated compared with normoglycemic animals. This indicates that bone marrow transplantation may promote angiogenesis after tissue damage.

The study demonstrates that bone marrow transplantation stimulates  $\beta$ -cell replication and islet regeneration in proportion to the degree of  $\beta$ -cell injury. The effect appears attributed to bone marrow-derived hematopoietic cells engrafted into the pancreas. The findings represent a novel mechanism by which  $\beta$ -cell replication can be adjusted to altered demands, and may in principle be exploited for therapeutic purposes. The concept is supported by a recent demonstration that bone marrow transplantation has strong beneficial effects on  $\beta$ -cell function in newly diagnosed type 1 diabetes patients (Voltarelli et al., 2007).

### Conclusions

- Bone marrow transplantation stimulates proliferation of pancreatic  $\beta$ -cells, and does so in proportion to on the degree of pancreatic tissue damage.
- Bone marrow transplantation promotes endogenous angiogenesis after tissue damage. Only a minute fraction, if any, of the transplanted bone marrow-derived cells acquire an endothelial nature.
- Bone marrow-derived cells have limited, if any, capacity to differentiate into pancreatic  $\beta$ -cells.
- The majority of bone marrow-derived cells engrafted in the damaged tissue maintain their hematopoietic phenotype.

## ACKNOWLEDGEMENTS

I am deeply grateful to everyone who has helped me to make this book come true. A big thank to all that I interacted with at the old department of Medical Chemistry, at the Karolinska Institute, at the Wallenberg laboratory and at the Institute of Biomedicine. During these years I have made friends for life! You mean very much to me!

I am deeply grateful to my supervisor Christer Betsholtz for his encouragement, inspiration and support throughout this work. I appreciated very much the many interesting scientific discussions, the fruitful exchange of knowledge and the stimulating atmosphere in the group. Thank you for guiding me into the fascinating world of angiogenesis. Many thanks also for being such a good companion and carrier of luggage on our runnings to the Central station in Stockholm. We mostly caught the train!

Thank you Anne! I can honestly say that this book would never have been written without your support. You have given me strength, time and time again. The selfless way you devoted your time and energy whenever asked was invaluable. Your incredible enthusiasm, your support through hard times, your genuine curiosity for science, no matter the topic, are very much appreciated. You are my friend and guiding star.

My beloved Lars! You are my best friend, my mentor and my partner in life. Thank you for being so wise. The words you said to me back in 1987 were absolutely right: science is fun! I thank you with all my heart!

I would like to express my appreciation to the prefect Anders Oldfors and rector of studies Susanna Cardell at the Intitute of Biomedicine, for support during the last part of my thesis work. I also want to thank Per Elias, the head of our department, for constructive criticism and valuable advice.

I would particularly like to express my gratitude to Holger Gerhardt for introducing me to the ideas and experimental techniques in the world of tip cells and fusion. I always admired your inspiring enthusiasm, your never ending flow of bright ideas and your courage in employing new and difficult methods.

Elisabet W., my dear friend, many tanks for your support always and in every situation! Your philosophical mind and extensive knowledge about many things make it rewarding to listen to your advice. You have almost become a member of the family.

Cecilia B., I admire your upright and honest character and your courage. Thank you for your advices both regarding science and life in general.

My very special thanks to previous and present friends and colleagues in the Betsholtz research group in Gothenburg and Stockholm: Maria E., Alexandra A., Matias B., Patrik A., Hans B., Minoru T., Per L., Mattias K., Mats H., Liqun H., Monica E., Guillem G., Paula M., Konstantin G., Ying S., Maya N., Johanna A., Annika A., Desiree V., Johan D., Radiosa G., Kazuhiro H., Sara K. You have all contributed to the very special atmosphere and the flow of scientific information in the group. I had so much fun at KI that I will never forget (even if I tried). Jenny N., thanks for your nice company during our commuting between Gothenburg and Stockholm.

Thank you Iris H., for our discussions about everything, science and life. Thanks for sharing your extensive experience with me and for your friendship and kindness. I appreciated your suggestions on my thesis manuscript very much. Bernard, many thanks for our interesting discussions about biology and life. You emitted scientific reason, good judgment and much humour, which makes life easier in the lab. Thank you Stina for many enjoyable conversations although you always had to remind me about the past when I was young!

Thank you Louise for always being considerate and generous.

My friend Yalda, thank you for your strength and courage, and for many elevating discussions in different fields. Many thanks to you Anna N. for your sensible suggestions at a critical point in my life! Thank you Erika for your strength and kindness!

Helena, thanks for reading my thesis and for valuable suggestions. I really appreciate your pep talks and positive attitude. Tina, thanks for being around in the lab, always helpful and always friendly. Dzeneta, thanks for your kindness and constantly being in such a good mood. Thank you Kate for many laughs and for bringing a touch of Australia to the lab. Hamid, thank you for always being so kind and helpful and for sharing my music interests! Sunita and Zulfi, thanks for your friendship, computer science and good food experience. Your company during late evenings in the lab and our collaboration was much appreciated. Simon, thanks for your kindness and interest in my project.

My sincere thanks are due to Sven-Olof Olofsson and Jan Borén for so much facilitating my return to Gothenburg. You provided a lab bench and a stimulating environment. I would also like to thank all my friends and colleagues at the Wallenberg Laboratory for their generosity and kindness.

I would also like to express my deep gratitude to Mikael Nilsson, Therese C., Camilla I., Shawn L., for generously sharing your cell culture rum and other necessary facilities for cell culture work, when I moved back to the department of Medical Biochemistry. It was a pleasure to work together with you!

Thank you Julia and Maria, for all chats and advice!

I would like to express my thanks to Karl Tryggvason and my friends in his group. Timo, Anne-May, Stefania, Jaakko, Masa, Juha, Àsi, Berit, Ann-Sofie, Anna, Eyrùn, Marko, Ari, Ann-Charlotte. Thanks for valuable scientific and teaching interactions and for all happy gatherings at MBB.

Jane, Ann, Anne, Tina, Annika, Anna, Carina, Maria, Henrik, Lars, and Ulla! Thank you for more than 20 years friendship, I was the last member of “Lasses damorkester”. You really prepared me for my future work. I still feel your strong support! Jane, every time I am stressed by my work I remember your comment: “Take it easy! This is a research group at the university, not the emergency lab in the hospital”. I love our present monthly lunches together.

Irma, Embla and LarsLove! It is a privilege to be your mother, you are my hope and happiness in life. You are in my every breath!

## REFERENCES

- Adams, R. H., Alitalo, K., 2007. Molecular regulation of angiogenesis and lymphangiogenesis. *Nat Rev Mol Cell Biol.* 8, 464-78.
- Allende, M. L., Proia, R. L., 2002. Sphingosine-1-phosphate receptors and the development of the vascular system. *Biochim Biophys Acta.* 1582, 222-7.
- Araki, K., Imaizumi, T., Okuyama, K., Oike, Y., Yamamura, K., 1997. Efficiency of recombination by Cre transient expression in embryonic stem cells: comparison of various promoters. *J Biochem.* 122, 977-82.
- Ashton, N., 1970. Retinal angiogenesis in the human embryo. *Br Med Bull.* 26, 103-6.
- Augustin, H. G., Koh, G. Y., Thurston, G., Alitalo, K., 2009. Control of vascular morphogenesis and homeostasis through the angiopoietin-Tie system. *Nat Rev Mol Cell Biol.* 10, 165-77.
- Bazzoni, G., Dejana, E., 2004. Endothelial cell-to-cell junctions: molecular organization and role in vascular homeostasis. *Physiol Rev.* 84, 869-901.
- Betsholtz, C., 1995. Role of platelet-derived growth factors in mouse development. *Int J Dev Biol.* 39, 817-25.
- Betsholtz, C., Lindblom, P., Gerhardt, H., 2005. Role of pericytes in vascular morphogenesis. *EXS.* 115-25.
- Betsholtz, C., Raines, E. W., 1997. Platelet-derived growth factor: a key regulator of connective tissue cells in embryogenesis and pathogenesis. *Kidney Int.* 51, 1361-9.
- Bondjers, C., He, L., Takemoto, M., Norlin, J., Asker, N., Hellstrom, M., Lindahl, P., Betsholtz, C., 2006. Microarray analysis of blood microvessels from PDGF-B and PDGF-Rbeta mutant mice identifies novel markers for brain pericytes. *FASEB J.* 20, 1703-5.
- Bonner-Weir, S., Baxter, L. A., Schuppin, G. T., Smith, F. E., 1993. A second pathway for regeneration of adult exocrine and endocrine pancreas. A possible recapitulation of embryonic development. *Diabetes.* 42, 1715-20.
- Bonner-Weir, S., Taneja, M., Weir, G. C., Tatarkiewicz, K., Song, K. H., Sharma, A., O'Neil, J. J., 2000. In vitro cultivation of human islets from expanded ductal tissue. *Proc Natl Acad Sci U S A.* 97, 7999-8004.
- Burri, P. H., Tarek, M. R., 1990. A novel mechanism of capillary growth in the rat pulmonary microcirculation. *Anat Rec.* 228, 35-45.
- Calcutt, N. A., Cooper, M. E., Kern, T. S., Schmidt, A. M., 2009. Therapies for hyperglycaemia-induced diabetic complications: from animal models to clinical trials. *Nat Rev Drug Discov.* 8, 417-29.
- Carmeliet, P., Ferreira, V., Breier, G., Pollefeyt, S., Kieckens, L., Gertsenstein, M., Fahrig, M., Vandenhoeck, A., Harpal, K., Eberhardt, C., Declercq, C., Pawling, J., Moons, L., Collen, D., Risau, W., Nagy, A., 1996. Abnormal blood vessel development and lethality in embryos lacking a single VEGF allele. *Nature.* 380, 435-9.



- Carmeliet, P., Jain, R. K., 2000. Angiogenesis in cancer and other diseases. *Nature*. 407, 249-57.
- Cavallaro, U., Dejana, E., 2011. Adhesion molecule signalling: not always a sticky business. *Nat Rev Mol Cell Biol*. 12, 189-97.
- Chan-Ling, T., McLeod, D. S., Hughes, S., Baxter, L., Chu, Y., Hasegawa, T., Luty, G. A., 2004. Astrocyte-endothelial cell relationships during human retinal vascular development. *Invest Ophthalmol Vis Sci*. 45, 2020-32.
- Chan-Ling, T., Stone, J., 1991. Factors determining the migration of astrocytes into the developing retina: migration does not depend on intact axons or patent vessels. *J Comp Neurol*. 303, 375-86.
- Chan-Ling, T. L., Halasz, P., Stone, J., 1990. Development of retinal vasculature in the cat: processes and mechanisms. *Curr Eye Res*. 9, 459-78.
- Checchin, D., Sennlaub, F., Levavasseur, E., Leduc, M., Chemtob, S., 2006. Potential role of microglia in retinal blood vessel formation. *Invest Ophthalmol Vis Sci*. 47, 3595-602.
- Cho, H., Kozasa, T., Bondjers, C., Betsholtz, C., Kehrl, J. H., 2003. Pericyte-specific expression of Rgs5: implications for PDGF and EDG receptor signaling during vascular maturation. *FASEB J*. 17, 440-2.
- Choi, K., 2002. The hemangioblast: a common progenitor of hematopoietic and endothelial cells. *J Hematother Stem Cell Res*. 11, 91-101.
- Chung, Y. S., Zhang, W. J., Arentson, E., Kingsley, P. D., Palis, J., Choi, K., 2002. Lineage analysis of the hemangioblast as defined by FLK1 and SCL expression. *Development*. 129, 5511-20.
- Cleaver, O., Melton, D. A., 2003. Endothelial signaling during development. *Nat Med*. 9, 661-8.
- Connolly, S. E., Hores, T. A., Smith, L. E., D'Amore, P. A., 1988. Characterization of vascular development in the mouse retina. *Microvasc Res*. 36, 275-90.
- Conway, E. M., Collen, D., Carmeliet, P., 2001. Molecular mechanisms of blood vessel growth. *Cardiovasc Res*. 49, 507-21.
- Coultas, L., Chawengsaksophak, K., Rossant, J., 2005a. Endothelial cells and VEGF in vascular development. *Nature*. 438, 937-945.
- Coultas, L., Chawengsaksophak, K., Rossant, J., 2005b. Endothelial cells and VEGF in vascular development. *Nature*. 438, 937-45.
- De Palma, M., Venneri, M. A., Galli, R., Sergi Sergi, L., Politi, L. S., Sampaolesi, M., Naldini, L., 2005. Tie2 identifies a hematopoietic lineage of proangiogenic monocytes required for tumor vessel formation and a mesenchymal population of pericyte progenitors. *Cancer Cell*. 8, 211-26.
- Defilippi, P., Olivo, C., Venturino, M., Dolce, L., Silengo, L., Tarone, G., 1999. Actin cytoskeleton organization in response to integrin-mediated adhesion. *Microsc Res Tech*. 47, 67-78.
- Dor, Y., Brown, J., Martinez, O. I., Melton, D. A., 2004. Adult pancreatic beta-cells are formed by self-duplication rather than stem-cell differentiation. *Nature*. 429, 41-6.

- Dorrell, M. I., Aguilar, E., Friedlander, M., 2002. Retinal vascular development is mediated by endothelial filopodia, a preexisting astrocytic template and specific R-cadherin adhesion. *Invest Ophthalmol Vis Sci.* 43, 3500-10.
- Dumont, D. J., Yamaguchi, T. P., Conlon, R. A., Rossant, J., Breitman, M. L., 1992. tek, a novel tyrosine kinase gene located on mouse chromosome 4, is expressed in endothelial cells and their presumptive precursors. *Oncogene.* 7, 1471-80.
- Eichmann, A., Pardanaud, L., Yuan, L., Moyon, D., 2002. Vasculogenesis and the search for the hemangioblast. *J Hematother Stem Cell Res.* 11, 207-14.
- Eltzschig, H. K., Carmeliet, P., Hypoxia and inflammation. *N Engl J Med.* 364, 656-65.
- Ema, M., Rossant, J., 2003. Cell fate decisions in early blood vessel formation. *Trends Cardiovasc Med.* 13, 254-9.
- Fantin, A., Vieira, J. M., Gestri, G., Denti, L., Schwarz, Q., Prykhodzhiy, S., Peri, F., Wilson, S. W., Ruhrberg, C., 2010. Tissue macrophages act as cellular chaperones for vascular anastomosis downstream of VEGF-mediated endothelial tip cell induction. *Blood.* 116, 829-40.
- Fernando, N. T., Koch, M., Rothrock, C., Gollogly, L. K., D'Amore, P. A., Ryeom, S., Yoon, S. S., 2008. Tumor escape from endogenous, extracellular matrix-associated angiogenesis inhibitors by up-regulation of multiple proangiogenic factors. *Clin Cancer Res.* 14, 1529-39.
- Ferrara, N., 2002. Role of vascular endothelial growth factor in physiologic and pathologic angiogenesis: therapeutic implications. *Semin Oncol.* 29, 10-4.
- Ferrara, N., 2009. Vascular endothelial growth factor. *Arterioscler Thromb Vasc Biol.* 29, 789-91.
- Ferrara, N., Carver-Moore, K., Chen, H., Dowd, M., Lu, L., O'Shea, K. S., Powell-Braxton, L., Hillan, K. J., Moore, M. W., 1996. Heterozygous embryonic lethality induced by targeted inactivation of the VEGF gene. *Nature.* 380, 439-42.
- Ferrara, N., Gerber, H. P., LeCouter, J., 2003. The biology of VEGF and its receptors. *Nat Med.* 9, 669-76.
- Flamme, I., Breier, G., Risau, W., 1995. Vascular endothelial growth factor (VEGF) and VEGF receptor 2 (flk-1) are expressed during vasculogenesis and vascular differentiation in the quail embryo. *Dev Biol.* 169, 699-712.
- Flamme, I., Frolich, T., Risau, W., 1997. Molecular mechanisms of vasculogenesis and embryonic angiogenesis. *J Cell Physiol.* 173, 206-10.
- Flower, R. W., McLeod, D. S., Lutty, G. A., Goldberg, B., Wajjer, S. D., 1985. Postnatal retinal vascular development of the puppy. *Invest Ophthalmol Vis Sci.* 26, 957-68.
- Folkman, J., 1992. The role of angiogenesis in tumor growth. *Semin Cancer Biol.* 3, 65-71.
- Folkman, J., 2007. Angiogenesis: an organizing principle for drug discovery? *Nat Rev Drug Discov.* 6, 273-86.
- Folkman, J., Shing, Y., 1992. Angiogenesis. *J Biol Chem.* 267, 10931-4.

- Frank, R. N., 2004. Diabetic retinopathy. *N Engl J Med.* 350, 48-58.
- Fruttiger, M., 2002. Development of the mouse retinal vasculature: angiogenesis versus vasculogenesis. *Invest Ophthalmol Vis Sci.* 43, 522-7.
- Fruttiger, M., 2007. Development of the retinal vasculature. *Angiogenesis.* 10, 77-88.
- Gaengel, K., Genove, G., Armulik, A., Betsholtz, C., 2009. Endothelial-mural cell signaling in vascular development and angiogenesis. *Arterioscler Thromb Vasc Biol.* 29, 630-8.
- Gariano, R. F., Gardner, T. W., 2005. Retinal angiogenesis in development and disease. *Nature.* 438, 960-6.
- Gariano, R. F., Iruela-Arispe, M. L., Hendrickson, A. E., 1994. Vascular development in primate retina: comparison of lamellar plexus formation in monkey and human. *Invest Ophthalmol Vis Sci.* 35, 3442-55.
- Gariano, R. F., Sage, E. H., Kaplan, H. J., Hendrickson, A. E., 1996. Development of astrocytes and their relation to blood vessels in fetal monkey retina. *Invest Ophthalmol Vis Sci.* 37, 2367-75.
- Gerhardt, H., 2008. VEGF and endothelial guidance in angiogenic sprouting. *Organogenesis.* 4, 241-6.
- Gerhardt, H., Betsholtz, C., 2003. Endothelial-pericyte interactions in angiogenesis. *Cell Tissue Res.* 314, 15-23.
- Gerhardt, H., Golding, M., Fruttiger, M., Ruhrberg, C., Lundkvist, A., Abramsson, A., Jeltsch, M., Mitchell, C., Alitalo, K., Shima, D., Betsholtz, C., 2003. VEGF guides angiogenic sprouting utilizing endothelial tip cell filopodia. *J Cell Biol.* 161, 1163-77.
- Gubbins, M. J., Berry, J. D., Corbett, C. R., Mogridge, J., Yuan, X. Y., Schmidt, L., Nicolas, B., Kabani, A., Tsang, R. S., 2006. Production and characterization of neutralizing monoclonal antibodies that recognize an epitope in domain 2 of Bacillus anthracis protective antigen. *FEMS Immunol Med Microbiol.* 47, 436-43.
- Guz, Y., Nasir, I., Teitelman, G., 2001. Regeneration of pancreatic beta cells from intra-islet precursor cells in an experimental model of diabetes. *Endocrinology.* 142, 4956-68.
- Hammes, H. P., Lin, J., Wagner, P., Feng, Y., Vom Hagen, F., Krzizok, T., Renner, O., Breier, G., Brownlee, M., Deutsch, U., 2004. Angiopoietin-2 causes pericyte dropout in the normal retina: evidence for involvement in diabetic retinopathy. *Diabetes.* 53, 1104-10.
- Hansen-Smith, F. M., Hudlicka, O., Egginton, S., 1996. In vivo angiogenesis in adult rat skeletal muscle: early changes in capillary network architecture and ultrastructure. *Cell Tissue Res.* 286, 123-36.
- Hellstrom, M., Kalen, M., Lindahl, P., Abramsson, A., Betsholtz, C., 1999. Role of PDGF-B and PDGFR-beta in recruitment of vascular smooth muscle cells and pericytes during embryonic blood vessel formation in the mouse. *Development.* 126, 3047-55.

- Hellstrom, M., Phng, L. K., Hofmann, J. J., Wallgard, E., Coultas, L., Lindblom, P., Alva, J., Nilsson, A. K., Karlsson, L., Gaiano, N., Yoon, K., Rossant, J., Iruela-Arispe, M. L., Kalen, M., Gerhardt, H., Betsholtz, C., 2007. Dll4 signalling through Notch1 regulates formation of tip cells during angiogenesis. *Nature*. 445, 776-80.
- Herken, R., Gotz, W., Wattjes, K. H., 1989. Initial development of capillaries in the neuroepithelium of the mouse. *J Anat*. 164, 85-92.
- Hess, D., Li, L., Martin, M., Sakano, S., Hill, D., Strutt, B., Thyssen, S., Gray, D. A., Bhatia, M., 2003. Bone marrow-derived stem cells initiate pancreatic regeneration. *Nat Biotechnol*. 21, 763-70.
- Hla, T., 2003. Signaling and biological actions of sphingosine 1-phosphate. *Pharmacol Res*. 47, 401-7.
- Hla, T., Lee, M. J., Ancellin, N., Liu, C. H., Thangada, S., Thompson, B. D., Kluk, M., 1999. Sphingosine-1-phosphate: extracellular mediator or intracellular second messenger? *Biochem Pharmacol*. 58, 201-7.
- Hoess, R. H., Abremski, K., 1985. Mechanism of strand cleavage and exchange in the Cre-lox site-specific recombination system. *J Mol Biol*. 181, 351-62.
- Horowitz, A., Simons, M., 2008. Branching morphogenesis. *Circ Res*. 103, 784-95.
- Huber, A. B., Kolodkin, A. L., Ginty, D. D., Cloutier, J. F., 2003. Signaling at the growth cone: ligand-receptor complexes and the control of axon growth and guidance. *Annu Rev Neurosci*. 26, 509-63.
- Hughes, S., Yang, H., Chan-Ling, T., 2000. Vascularization of the human fetal retina: roles of vasculogenesis and angiogenesis. *Invest Ophthalmol Vis Sci*. 41, 1217-28.
- Ianus, A., Holz, G. G., Theise, N. D., Hussain, M. A., 2003. In vivo derivation of glucose-competent pancreatic endocrine cells from bone marrow without evidence of cell fusion. *J Clin Invest*. 111, 843-50.
- Jain, R., Chan, M. K., 2003. Mechanisms of ligand discrimination by heme proteins. *J Biol Inorg Chem*. 8, 1-11.
- Jain, R. K., 2003. Molecular regulation of vessel maturation. *Nat Med*. 9, 685-93.
- Kisanuki, Y. Y., Hammer, R. E., Miyazaki, J., Williams, S. C., Richardson, J. A., Yanagisawa, M., 2001. Tie2-Cre transgenic mice: a new model for endothelial cell-lineage analysis in vivo. *Dev Biol*. 230, 230-42.
- Klagsbrun, M., Moses, M. A., 1999. Molecular angiogenesis. *Chem Biol*. 6, R217-24.
- Kohama, T., Olivera, A., Edsall, L., Nagiec, M. M., Dickson, R., Spiegel, S., 1998. Molecular cloning and functional characterization of murine sphingosine kinase. *J Biol Chem*. 273, 23722-8.
- Kono, M., Mi, Y., Liu, Y., Sasaki, T., Allende, M. L., Wu, Y.-P., Yamashita, T., Proia, R. L., 2004. The sphingosine-1-phosphate receptors S1P1, S1P2, and S1P3 function coordinately during embryonic angiogenesis. *J Biol Chem*. 279, 29367-73.
- Kopatz, K., Distler, C., 2000. Astrocyte invasion and vasculogenesis in the developing ferret retina. *J Neurocytol*. 29, 157-72.

- Kruger, E. A., Duray, P. H., Price, D. K., Pluda, J. M., Figg, W. D., 2001. Approaches to preclinical screening of antiangiogenic agents. *Semin Oncol.* 28, 570-6.
- Kubota, Y., Takubo, K., Shimizu, T., Ohno, H., Kishi, K., Shibuya, M., Saya, H., Suda, T., 2009. M-CSF inhibition selectively targets pathological angiogenesis and lymphangiogenesis. *J Exp Med.* 206, 1089-102.
- Kurz, H., Korn, J., Eggl, P. S., Huang, R., Christ, B., 2001. Embryonic central nervous system angiogenesis does not involve blood-borne endothelial progenitors. *J Comp Neurol.* 436, 263-74.
- Lammert, E., Cleaver, O., Melton, D., 2003. Role of endothelial cells in early pancreas and liver development. *Mech Dev.* 120, 59-64.
- Lardon, J., Huyens, N., Rومان, I., Bouwens, L., 2004. Exocrine cell transdifferentiation in dexamethasone-treated rat pancreas. *Virchows Arch.* 444, 61-5.
- Leveen, P., Pekny, M., Gebre-Medhin, S., Swolin, B., Larsson, E., Betsholtz, C., 1994. Mice deficient for PDGF B show renal, cardiovascular, and hematological abnormalities. *Genes Dev.* 8, 1875-87.
- Lin, F. J., Tsai, M. J., Tsai, S. Y., 2007. Artery and vein formation: a tug of war between different forces. *EMBO Rep.* 8, 920-4.
- Lindahl, P., Johansson, B. R., Leveen, P., Betsholtz, C., 1997. Pericyte loss and microaneurysm formation in PDGF-B-deficient mice. *Science.* 277, 242-5.
- Ling, T. L., Mitrofanis, J., Stone, J., 1989. Origin of retinal astrocytes in the rat: evidence of migration from the optic nerve. *J Comp Neurol.* 286, 345-52.
- Liu, Y., Wada, R., Yamashita, T., Mi, Y., Deng, C. X., Hobson, J. P., Rosenfeldt, H. M., Nava, V. E., Chae, S. S., Lee, M. J., Liu, C. H., Hla, T., Spiegel, S., Proia, R. L., 2000. Edg-1, the G protein-coupled receptor for sphingosine-1-phosphate, is essential for vascular maturation. *J Clin Invest.* 106, 951-61.
- Lohela, M., Bry, M., Tammela, T., Alitalo, K., 2009. VEGFs and receptors involved in angiogenesis versus lymphangiogenesis. *Curr Opin Cell Biol.* 21, 154-65.
- Maisonpierre, P. C., Goldfarb, M., Yancopoulos, G. D., Gao, G., 1993. Distinct rat genes with related profiles of expression define a TIE receptor tyrosine kinase family. *Oncogene.* 8, 1631-7.
- Maisonpierre, P. C., Suri, C., Jones, P. F., Bartunkova, S., Wiegand, S. J., Radziejewski, C., Compton, D., McClain, J., Aldrich, T. H., Papadopoulos, N., Daly, T. J., Davis, S., Sato, T. N., Yancopoulos, G. D., 1997. Angiopoietin-2, a natural antagonist for Tie2 that disrupts in vivo angiogenesis. *Science.* 277, 55-60.
- Mandala, S. M., Thornton, R., Tu, Z., Kurtz, M. B., Nickels, J., Broach, J., Menzeleev, R., Spiegel, S., 1998. Sphingoid base 1-phosphate phosphatase: a key regulator of sphingolipid metabolism and stress response. *Proc Natl Acad Sci USA.* 95, 150-5.

- Mandriota, S. J., Pepper, M. S., 1998. Regulation of angiopoietin-2 mRNA levels in bovine microvascular endothelial cells by cytokines and hypoxia. *Circ Res.* 83, 852-9.
- Marin-Padilla, M., 1985. Early vascularization of the embryonic cerebral cortex: Golgi and electron microscopic studies. *J Comp Neurol.* 241, 237-49.
- Mizugishi, K., Yamashita, T., Olivera, A., Miller, G. F., Spiegel, S., Proia, R. L., 2005. Essential role for sphingosine kinases in neural and vascular development. *Mol Cell Biol.* 25, 11113-21.
- Morse, D. E., McCann, P. S., 1984. Neuroectoderm of the early embryonic rat eye. Scanning electron microscopy. *Invest Ophthalmol Vis Sci.* 25, 899-907.
- Nicosia, R. F., Ottinetti, A., 1990. Growth of microvessels in serum-free matrix culture of rat aorta. A quantitative assay of angiogenesis in vitro. *Lab Invest.* 63, 115-22.
- Nicosia, R. F., T'chao, R., Leighton, J., 1982. Histotypic angiogenesis in vitro: light microscopic, ultrastructural, and radioautographic studies. *In Vitro.* 18, 538-49.
- Nir, T., Melton, D. A., Dor, Y., 2007. Recovery from diabetes in mice by beta cell regeneration. *J Clin Invest.* 117, 2553-61.
- Novak, A., Guo, C., Yang, W., Nagy, A., Lobe, C. G., 2000. Z/EG, a double reporter mouse line that expresses enhanced green fluorescent protein upon Cre-mediated excision. *Genesis.* 28, 147-55.
- Nyberg, P., Xie, L., Kalluri, R., 2005. Endogenous inhibitors of angiogenesis. *Cancer Res.* 65, 3967-79.
- Oh, H., Takagi, H., Suzuma, K., Otani, A., Matsumura, M., Honda, Y., 1999. Hypoxia and vascular endothelial growth factor selectively up-regulate angiopoietin-2 in bovine microvascular endothelial cells. *J Biol Chem.* 274, 15732-9.
- Olsson, A. K., Dimberg, A., Kreuger, J., Claesson-Welsh, L., 2006. VEGF receptor signalling - in control of vascular function. *Nat Rev Mol Cell Biol.* 7, 359-71.
- Otani, A., Kinder, K., Ewalt, K., Otero, F. J., Schimmel, P., Friedlander, M., 2002. Bone marrow-derived stem cells target retinal astrocytes and can promote or inhibit retinal angiogenesis. *Nat Med.* 8, 1004-10.
- Palis, J., McGrath, K. E., Kingsley, P. D., 1995. Initiation of hematopoiesis and vasculogenesis in murine yolk sac explants. *Blood.* 86, 156-63.
- Papetti, M., Herman, I. M., 2002. Mechanisms of normal and tumor-derived angiogenesis. *Am J Physiol Cell Physiol.* 282, C947-70.
- Partanen, J., Armstrong, E., Makela, T. P., Korhonen, J., Sandberg, M., Renkonen, R., Knuutila, S., Huebner, K., Alitalo, K., 1992. A novel endothelial cell surface receptor tyrosine kinase with extracellular epidermal growth factor homology domains. *Mol Cell Biol.* 12, 1698-707.
- Phng, L. K., Gerhardt, H., 2009. Angiogenesis: a team effort coordinated by notch. *Dev Cell.* 16, 196-208.

- Provis, J. M., Leech, J., Diaz, C. M., Penfold, P. L., Stone, J., Keshet, E., 1997. Development of the human retinal vasculature: cellular relations and VEGF expression. *Exp Eye Res.* 65, 555-68.
- Rafii, S., Lyden, D., 2003. Therapeutic stem and progenitor cell transplantation for organ vascularization and regeneration. *Nat Med.* 9, 702-12.
- Red-Horse, K., Crawford, Y., Shojaei, F., Ferrara, N., 2007. Endothelium-microenvironment interactions in the developing embryo and in the adult. *Dev Cell.* 12, 181-94.
- Risau, W., 1995. Differentiation of endothelium. *FASEB J.* 9, 926-33.
- Risau, W., 1997. Mechanisms of angiogenesis. *Nature.* 386, 671-4.
- Risau, W., Flamme, I., 1995. Vasculogenesis. *Annu Rev Cell Dev Biol.* 11, 73-91.
- Risau, W., Lemmon, V., 1988. Changes in the vascular extracellular matrix during embryonic vasculogenesis and angiogenesis. *Dev Biol.* 125, 441-50.
- Roca, C., Adams, R. H., 2007. Regulation of vascular morphogenesis by Notch signaling. *Genes Dev.* 21, 2511-24.
- Rogers, P. A., Lederman, F., Taylor, N., 1998. Endometrial microvascular growth in normal and dysfunctional states. *Hum Reprod Update.* 4, 503-8.
- Rosen, H., Gonzalez-Cabrera, P., Sanna, M., Brown, S., 2009. Sphingosine 1-Phosphate Receptor Signaling. *Annu Rev Biochem.*
- Rossant, J., Howard, L., 2002. Signaling pathways in vascular development. *Annu Rev Cell Dev Biol.* 18, 541-73.
- Roy, S., Ha, J., Trudeau, K., Beglova, E., 2010. Vascular basement membrane thickening in diabetic retinopathy. *Curr Eye Res.* 35, 1045-56.
- Ruhrberg, C., Gerhardt, H., Golding, M., Watson, R., Ioannidou, S., Fujisawa, H., Betsholtz, C., Shima, D. T., 2002. Spatially restricted patterning cues provided by heparin-binding VEGF-A control blood vessel branching morphogenesis. *Genes Dev.* 16, 2684-98.
- Rymo, S. F., Gerhardt, H., Wolfhagen Sand, F., Lang, R., Uv, A., Betsholtz, C., A two-way communication between microglial cells and angiogenic sprouts regulates angiogenesis in aortic ring cultures. *PLoS One.* 6, e15846.
- Rymo, S. F., Gerhardt, H., Wolfhagen Sand, F., Lang, R., Uv, A., Betsholtz, C., 2011. A two-way communication between microglial cells and angiogenic sprouts regulates angiogenesis in aortic ring cultures. *PLoS ONE.* 6, e15846.
- Saharinen, P., Kerkela, K., Ekman, N., Marron, M., Brindle, N., Lee, G. M., Augustin, H., Koh, G. Y., Alitalo, K., 2005. Multiple angiopoietin recombinant proteins activate the Tie1 receptor tyrosine kinase and promote its interaction with Tie2. *J Cell Biol.* 169, 239-43.
- Sanna, M. G., Liao, J., Jo, E., Alfonso, C., Ahn, M.-Y., Peterson, M. S., Webb, B., Lefebvre, S., Chun, J., Gray, N., Rosen, H., 2004. Sphingosine 1-phosphate (S1P) receptor subtypes S1P1 and S1P3, respectively, regulate lymphocyte recirculation and heart rate. *J Biol Chem.* 279, 13839-48.
- Sanna, M. G., Wang, S.-K., Gonzalez-Cabrera, P. J., Don, A., Marsolais, D., Matheu, M. P., Wei, S. H., Parker, I., Jo, E., Cheng, W.-C., Cahalan, M.

- D., Wong, C.-H., Rosen, H., 2006. Enhancement of capillary leakage and restoration of lymphocyte egress by a chiral S1P1 antagonist in vivo. *Nat Chem Biol.* 2, 434-41.
- Sato, T. N., Qin, Y., Kozak, C. A., Audus, K. L., 1993. Tie-1 and tie-2 define another class of putative receptor tyrosine kinase genes expressed in early embryonic vascular system. *Proc Natl Acad Sci U S A.* 90, 9355-8.
- Sato, T. N., Tozawa, Y., Deutsch, U., Wolburg-Buchholz, K., Fujiwara, Y., Gendron-Maguire, M., Gridley, T., Wolburg, H., Risau, W., Qin, Y., 1995. Distinct roles of the receptor tyrosine kinases Tie-1 and Tie-2 in blood vessel formation. *Nature.* 376, 70-4.
- Schmidt, T., Carmeliet, P., 2010. Blood-vessel formation: Bridges that guide and unite. *Nature.* 465, 697-9.
- Schnitzer, J., 1988. Astrocytes in the guinea pig, horse, and monkey retina: their occurrence coincides with the presence of blood vessels. *Glia.* 1, 74-89.
- Schroeder, I. S., Rolletschek, A., Blyszczuk, P., Kania, G., Wobus, A. M., 2006. Differentiation of mouse embryonic stem cells to insulin-producing cells. *Nat Protoc.* 1, 495-507.
- Shalaby, F., Rossant, J., Yamaguchi, T. P., Gertsenstein, M., Wu, X. F., Breitman, M. L., Schuh, A. C., 1995. Failure of blood-island formation and vasculogenesis in Flk-1-deficient mice. *Nature.* 376, 62-6.
- Shapiro, A. M., Ricordi, C., Hering, B. J., Auchincloss, H., Lindblad, R., Robertson, R. P., Secchi, A., Brendel, M. D., Berney, T., Brennan, D. C., Cagliero, E., Alejandro, R., Ryan, E. A., DiMercurio, B., Morel, P., Polonsky, K. S., Reems, J. A., Bretzel, R. G., Bertuzzi, F., Froud, T., Kandaswamy, R., Sutherland, D. E., Eisenbarth, G., Segal, M., Preiksaitis, J., Korbitt, G. S., Barton, F. B., Viviano, L., Seyfert-Margolis, V., Bluestone, J., Lakey, J. R., 2006. International trial of the Edmonton protocol for islet transplantation. *N Engl J Med.* 355, 1318-30.
- Stalmans, I., Ng, Y. S., Rohan, R., Fruttiger, M., Bouche, A., Yuce, A., Fujisawa, H., Hermans, B., Shani, M., Jansen, S., Hicklin, D., Anderson, D. J., Gardiner, T., Hammes, H. P., Moons, L., Dewerchin, M., Collen, D., Carmeliet, P., D'Amore, P. A., 2002. Arteriolar and venular patterning in retinas of mice selectively expressing VEGF isoforms. *J Clin Invest.* 109, 327-36.
- Stone, J., Dreher, Z., 1987. Relationship between astrocytes, ganglion cells and vasculature of the retina. *J Comp Neurol.* 255, 35-49.
- Stone, J., Itin, A., Alon, T., Pe'er, J., Gnessin, H., Chan-Ling, T., Keshet, E., 1995. Development of retinal vasculature is mediated by hypoxia-induced vascular endothelial growth factor (VEGF) expression by neuroglia. *J Neurosci.* 15, 4738-47.
- Streit, W. J., 2001. Microglia and macrophages in the developing CNS. *Neurotoxicology.* 22, 619-24.
- Strlic, B., Kucera, T., Lammert, E., 2010. Formation of cardiovascular tubes in invertebrates and vertebrates. *Cell Mol Life Sci.* 67, 3209-18.



- Suchting, S., Freitas, C., le Noble, F., Benedito, R., Breant, C., Duarte, A., Eichmann, A., 2007. The Notch ligand Delta-like 4 negatively regulates endothelial tip cell formation and vessel branching. *Proc Natl Acad Sci U S A.* 104, 3225-30.
- Suri, C., Jones, P. F., Patan, S., Bartunkova, S., Maisonpierre, P. C., Davis, S., Sato, T. N., Yancopoulos, G. D., 1996. Requisite role of angiopoietin-1, a ligand for the TIE2 receptor, during embryonic angiogenesis. *Cell.* 87, 1171-80.
- Suto, K., Yamazaki, Y., Morita, T., Mizuno, H., 2005. Crystal structures of novel vascular endothelial growth factors (VEGF) from snake venoms: insight into selective VEGF binding to kinase insert domain-containing receptor but not to fms-like tyrosine kinase-1. *J Biol Chem.* 280, 2126-31.
- Takahashi, H., Shibuya, M., 2005. The vascular endothelial growth factor (VEGF)/VEGF receptor system and its role under physiological and pathological conditions. *Clin Sci (Lond).* 109, 227-41.
- Thomas, M., Augustin, H. G., 2009. The role of the Angiopoietins in vascular morphogenesis. *Angiogenesis.* 12, 125-37.
- Valenzuela, D. M., Griffiths, J. A., Rojas, J., Aldrich, T. H., Jones, P. F., Zhou, H., McClain, J., Copeland, N. G., Gilbert, D. J., Jenkins, N. A., Huang, T., Papadopoulos, N., Maisonpierre, P. C., Davis, S., Yancopoulos, G. D., 1999. Angiopoietins 3 and 4: diverging gene counterparts in mice and humans. *Proc Natl Acad Sci U S A.* 96, 1904-9.
- van Veldhoven, P. P., Mannaerts, G. P., 1993. Sphingosine-phosphate lyase. *Adv Lipid Res.* 26, 69-98.
- Vogeli, K. M., Jin, S. W., Martin, G. R., Stainier, D. Y., 2006. A common progenitor for haematopoietic and endothelial lineages in the zebrafish gastrula. *Nature.* 443, 337-9.
- Voltarelli, J. C., Couri, C. E., Stracieri, A. B., Oliveira, M. C., Moraes, D. A., Pieroni, F., Coutinho, M., Malmegrim, K. C., Foss-Freitas, M. C., Simoes, B. P., Foss, M. C., Squiers, E., Burt, R. K., 2007. Autologous nonmyeloablative hematopoietic stem cell transplantation in newly diagnosed type 1 diabetes mellitus. *JAMA.* 297, 1568-76.
- von Tell, D., Armulik, A., Betsholtz, C., 2006. Pericytes and vascular stability. *Exp Cell Res.* 312, 623-9.
- Wakui, S., Yokoo, K., Muto, T., Suzuki, Y., Takahashi, H., Furusato, M., Hano, H., Endou, H., Kanai, Y., 2006. Localization of Ang-1, -2, Tie-2, and VEGF expression at endothelial-pericyte interdigitation in rat angiogenesis. *Lab Invest.* 86, 1172-84.
- Watanabe, T., Raff, M. C., 1988. Retinal astrocytes are immigrants from the optic nerve. *Nature.* 332, 834-7.
- West, H., Richardson, W. D., Fruttiger, M., 2005. Stabilization of the retinal vascular network by reciprocal feedback between blood vessels and astrocytes. *Development.* 132, 1855-62.

- Yana, I., Sagara, H., Takaki, S., Takatsu, K., Nakamura, K., Nakao, K., Katsuki, M., Taniguchi, S., Aoki, T., Sato, H., Weiss, S. J., Seiki, M., 2007. Crosstalk between neovessels and mural cells directs the site-specific expression of MT1-MMP to endothelial tip cells. *J Cell Sci.* 120, 1607-14.
- Yang, L., Yatomi, Y., Miura, Y., Satoh, K., Ozaki, Y., 1999. Metabolism and functional effects of sphingolipids in blood cells. *Br J Haematol.* 107, 282-93.
- Yano, M., Iwama, A., Nishio, H., Suda, J., Takada, G., Suda, T., 1997. Expression and function of murine receptor tyrosine kinases, TIE and TEK, in hematopoietic stem cells. *Blood.* 89, 4317-26.
- Yatomi, Y., Igarashi, Y., Yang, L., Hisano, N., Qi, R., Asazuma, N., Satoh, K., Ozaki, Y., Kume, S., 1997. Sphingosine 1-phosphate, a bioactive sphingolipid abundantly stored in platelets, is a normal constituent of human plasma and serum. *J Biochem.* 121, 969-73.
- Yatomi, Y., Ozaki, Y., Ohmori, T., Igarashi, Y., 2001. Sphingosine 1-phosphate: synthesis and release. *Prostaglandins.* 64, 107-122.
- Zhou, J., Saba, J. D., 1998. Identification of the first mammalian sphingosine phosphate lyase gene and its functional expression in yeast. *Biochem Biophys Res Commun.* 242, 502-7.
- Zhu, W.-H., Iurlaro, M., MacIntyre, A., Fogel, E., Nicosia, R. F., 2003. The mouse aorta model: influence of genetic background and aging on bFGF- and VEGF-induced angiogenic sprouting. *Angiogenesis.* 6, 193-9.
- Zulewski, H., Abraham, E. J., Gerlach, M. J., Daniel, P. B., Moritz, W., Muller, B., Vallejo, M., Thomas, M. K., Habener, J. F., 2001. Multipotential nestin-positive stem cells isolated from adult pancreatic islets differentiate ex vivo into pancreatic endocrine, exocrine, and hepatic phenotypes. *Diabetes.* 50, 521-33.