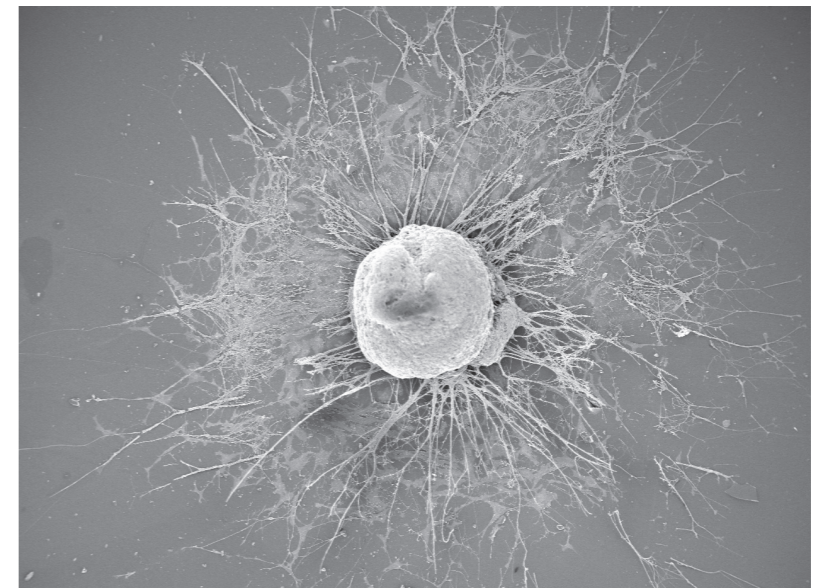


# Effects of intervertebral disc cells on neural tissue

*In vitro* and *in vivo* experimental studies



Karin Larsson

Institute of Clinical Sciences  
at Sahlgrenska Academy  
University of Gothenburg



UNIVERSITY OF GOTHENBURG

Karin Larsson

Effects of intervertebral disc cells on neural tissue – *In vitro* and *in vivo* experimental studies

2013

The Sahlgrenska Academy

ISBN 978-91-628-8603-5  
Printed by Ineko AB, Gothenburg