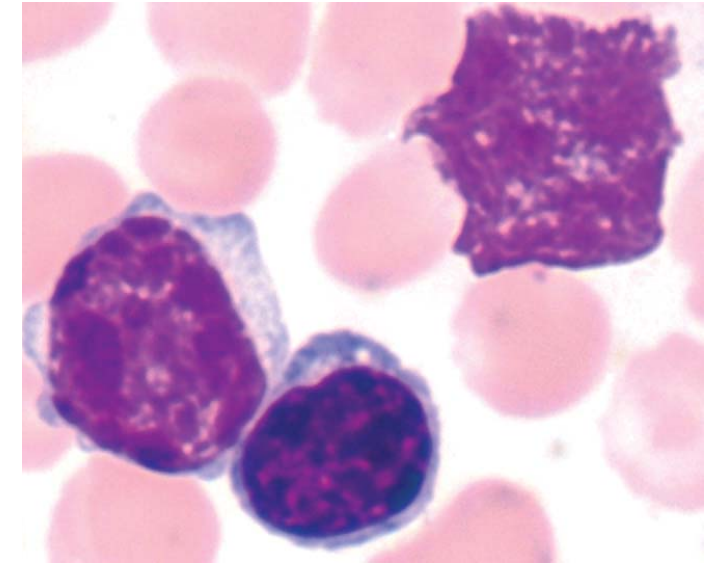


# Studies on therapeutic vaccination and immune evasion in chronic lymphocytic leukemia



Katarina Junevik

Institute of Biomedicine  
at Sahlgrenska Academy  
University of Gothenburg



UNIVERSITY OF GOTHENBURG

The Sahlgrenska Academy

Katarina Junevik

Studies on therapeutic vaccination and immune evasion in chronic lymphocytic leukemia

2013

ISBN 978-91-628-8720-9  
Printed by Ineko AB, Gothenburg