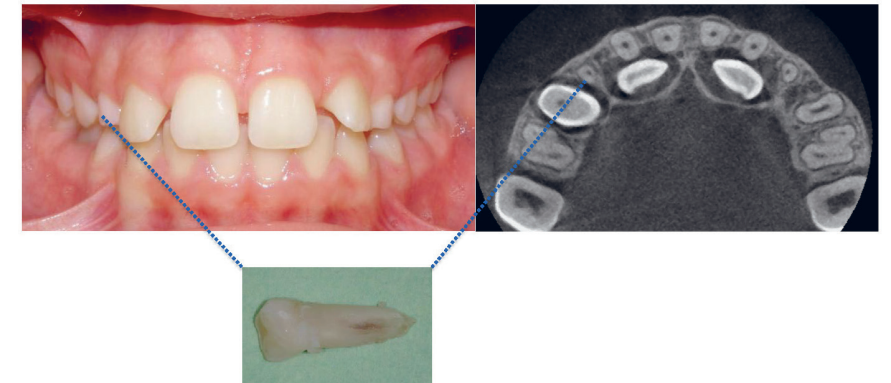


Swedish Dental Journal Supplement 234, 2014

Interceptive Treatment of Palatally Displaced Canines

Studies of treatment effect and patients' perception and methodological evaluation of 3D measurements of CBCT



Julia Naoumova

Institute of Odontology
at Sahlgrenska Academy
University of Gothenburg



UNIVERSITY OF GOTHENBURG

Julia Naoumova

Interceptive Treatment of Palatally Displaced Canines

The Sahlgrenska Academy

2014

ISBN 978-91-628-9109-1
Printed by Ineko AB, Gothenburg