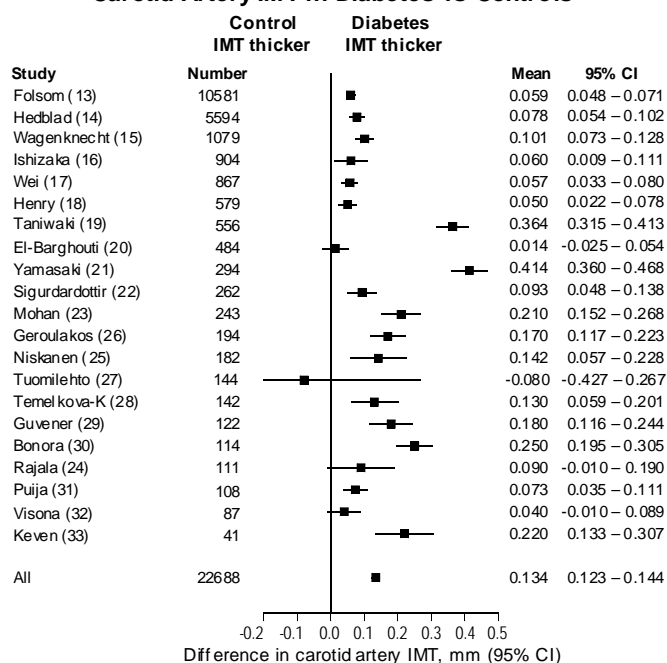


Results

Carotid Artery IMT in Diabetes vs Controls



Carotid Artery IMT in Impaired Glucose Tolerance (IGT) vs Controls

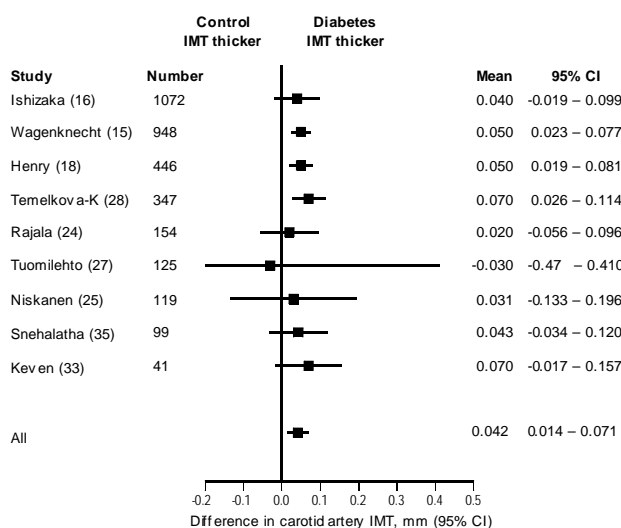


Figure 7. Meta-analysis showing the difference in carotid artery intima media thickness (IMT) between type 2 diabetes and controls (upper panel), and between patients with impaired glucose tolerance (IGT) and controls (lower panel). Means and 95% confidence intervals for the differences in separate studies and the summary of all studies are given.