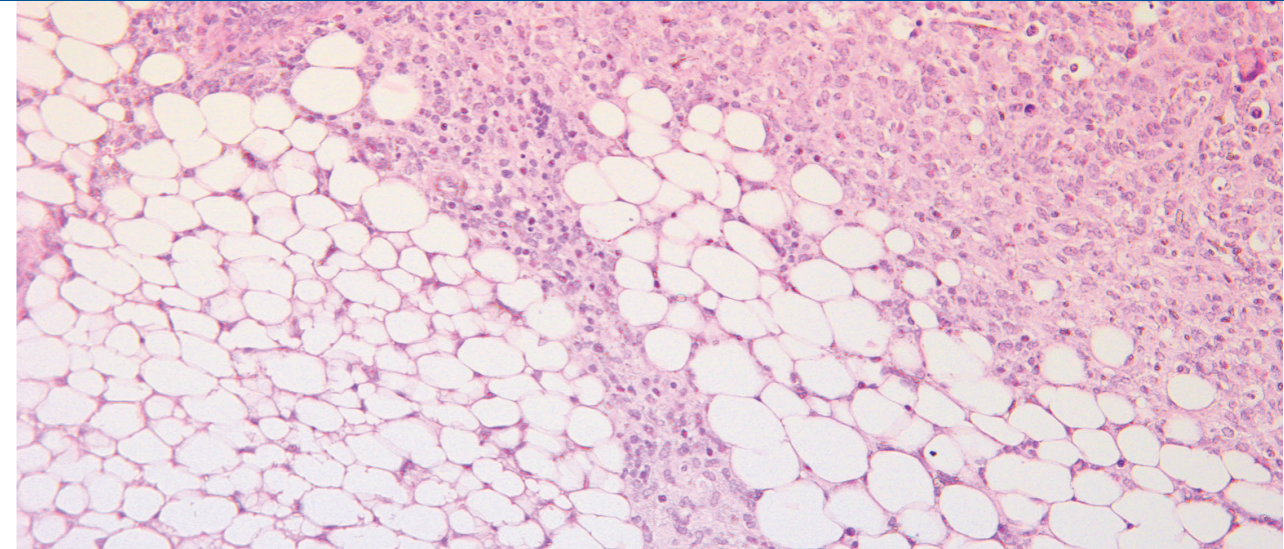


DOCTORAL
THESIS
SAHLGRENKA
ACADEMY

2019



Metabolic and immunological interactions between adipose tissue and breast cancer | Peter Micallef

Metabolic and immunological interactions between adipose tissue and breast cancer

Implications of obesity in tumor progression

Peter Micallef

SAHLGRENKA ACADEMY
INSTITUTE OF NEUROSCIENCE AND PHYSIOLOGY



ISBN 978-91-7833-518-3 (PRINT)
ISBN 978-91-7833-519-0 (PDF)
<http://hdl.handle.net/2077/60812>
Printed by BrandFactory, Gothenburg