

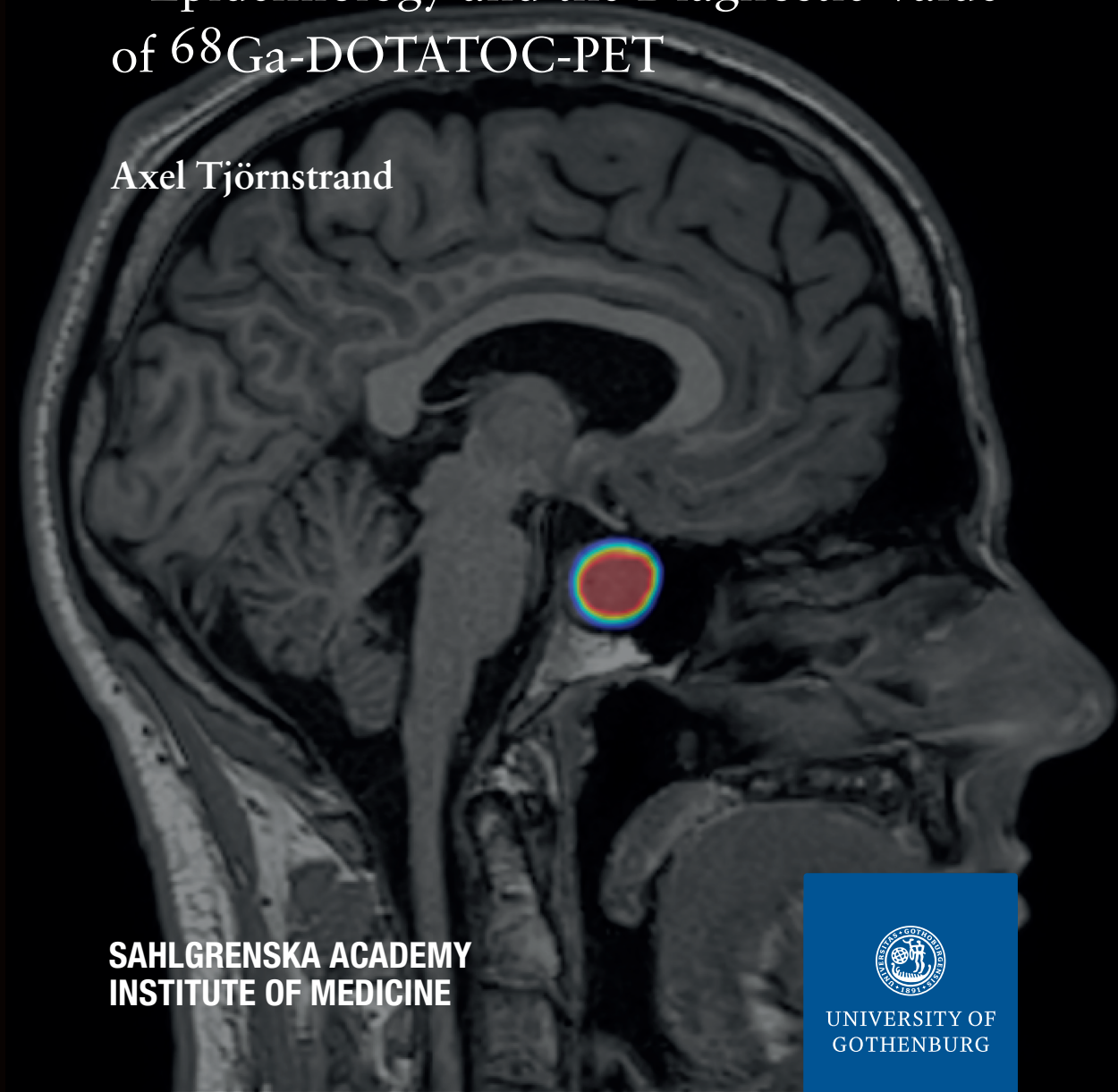
DOCTORAL  
THESIS  
SAHLGRENKA  
ACADEMY

2020

# Pituitary Tumors

– Epidemiology and the Diagnostic Value  
of  $^{68}\text{Ga}$ -DOTATOC-PET

Axel Tjörnstrand



Pituitary Tumors - Epidemiology and the Diagnostic Value of  $^{68}\text{Ga}$ -DOTATOC-PET | Axel Tjörnstrand

SAHLGRENKA ACADEMY  
INSTITUTE OF MEDICINE



UNIVERSITY OF  
GOTHENBURG

ISBN 978-91-8009-066-7 (PRINT)  
ISBN 978-91-8009-067-4 (PDF)  
<http://hdl.handle.net/2077/65130>

Printed by Stema Specialtryck AB, Borås