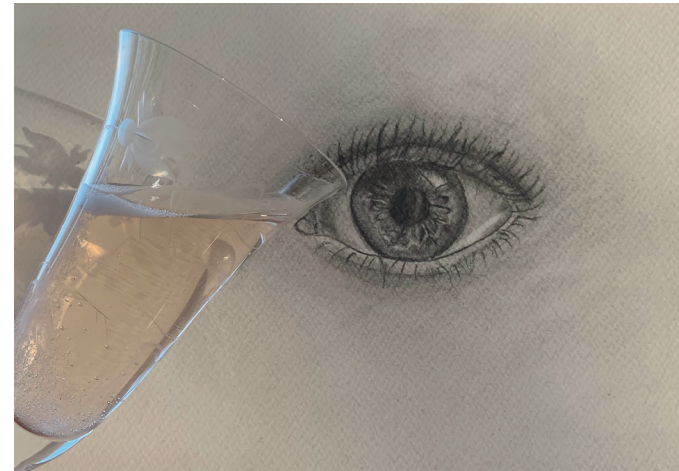


DOCTORAL
THESIS
SAHLGRENKA
ACADEMY

2021



Fetal Alcohol Spectrum Disorders in Children and Young Adults

with an emphasis on ophthalmology

Emelie Gyllencreutz

SAHLGRENKA ACADEMY
INSTITUTE OF NEUROSCIENCE AND PHYSIOLOGY



Fetal Alcohol Spectrum Disorders in Children and Young Adults | Emelie Gyllencreutz



Emelie Gyllencreutz is a medical doctor and a specialist in ophthalmology, working with patients of all ages. She wrote her first scientific article on vision screening in children, and has a special interest in pediatric ophthalmology. Her broad knowledge of ophthalmology has been valuable when investigating individuals with fetal alcohol spectrum disorders in a long-term follow-up.

ISBN 978-91-8009-074-2 (PRINT)
ISBN 978-91-8009-075-9 (PDF)
<http://hdl.handle.net/2077/67132>

Printed by Stema Specialtryck AB, Borås